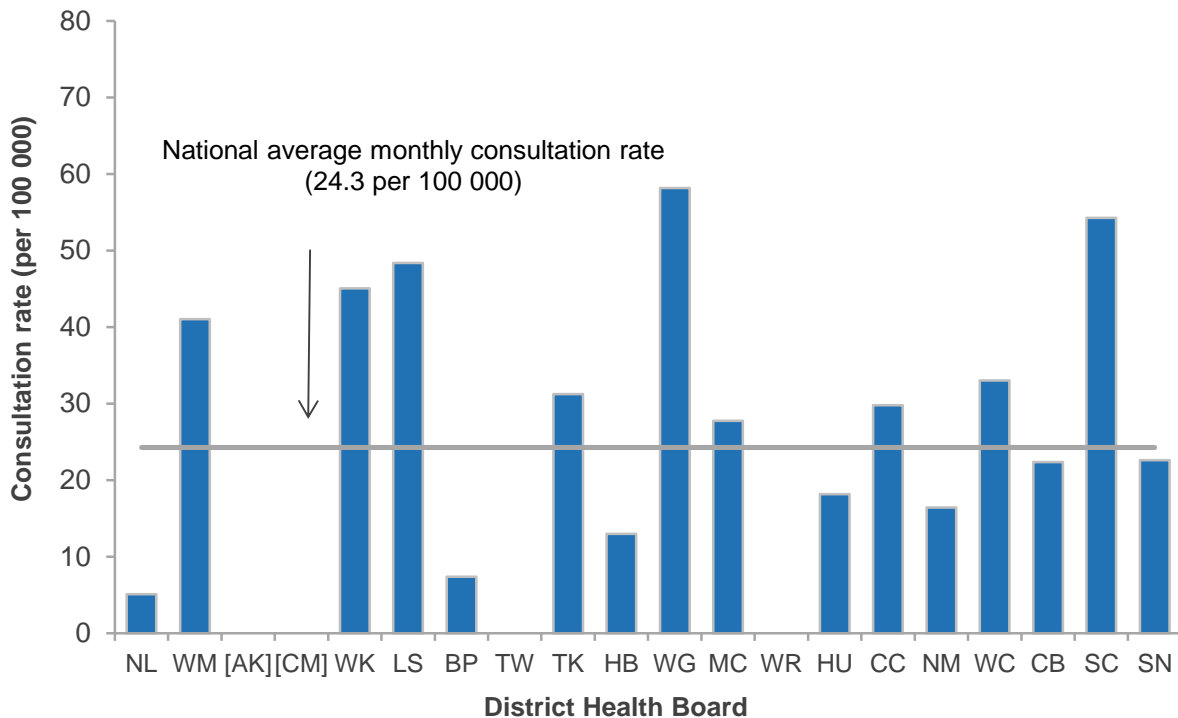


# INFLUENZA SURVEILLANCE SUMMARY - AUGUST 2013

During August (weeks 31–34), 361 consultations for influenza-like illness were reported from 67 general practices (on average) in 18 of the 20 District Health Boards (DHB). The average monthly consultation rate for August was 24.3 per 100 000 patient population.

Figure 1 compares the average monthly consultation rates for influenza-like illness for each DHB during August. Whanganui had the highest consultation rate (58.2 per 100 000, 11 cases), followed by South Canterbury (54.3 per 100 000, 15 cases), and Lakes (48.4 per 100 000, 6 cases).

**Figure 1. Average monthly consultation rates for influenza-like illness by DHB, August 2013**

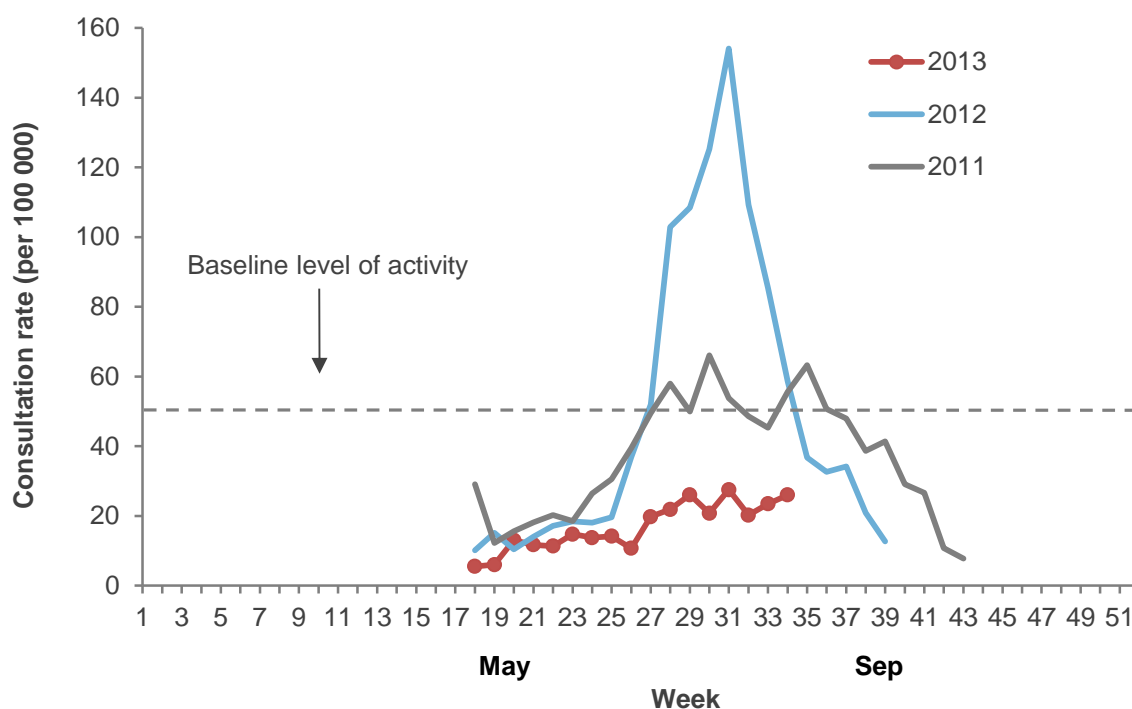


[ ] Not participating in the influenza sentinel surveillance.

Note: Auckland (AK) and Counties Manukau (CM) DHBs follow the Southern Hemisphere Influenza and Vaccine Effectiveness Research and Surveillance (SHIVERS) case definition which is different from this sentinel surveillance. Based on the SHIVERS weekly report, the ILI incidence for Auckland and Counties Manukau DHBs for August were 138.2 per 100 000 and 35.5 per 100 000 patient populations, respectively. For more details, please refer to the website: <http://www.esr.cri.nz/competencies/shivers/Pages/SHIVERSReports.aspx>

Figure 2 shows the national weekly consultation rates to the end of week 34, August 2013 and rates in 2012 and 2011.

**Figure 2. Weekly consultation rates for influenza-like illness in New Zealand, 2011, 2012 and 2013**



\* A weekly rate <50 ILI consultations per 100 000 patient population is considered baseline activity. A rate of 50–249 is considered indicative of normal seasonal influenza activity, and a rate of 250–399 indicative of higher than expected influenza activity. A rate >400 ILI consultations per 100 000 patient population indicates an epidemic level of influenza

## VIROLOGICAL SURVEILLANCE

A total of 117 swabs were received by virology laboratories from sentinel surveillance. Forty-five viruses were identified: B (24) including six B/Wisconsin/1/2010-like viruses, A(H3N2) (8) including two A/Victoria/361/2011 (H3N2)-like viruses, A (not sub-typed) (7), and A(H1N1)pdm09 (6). The distribution by DHB is shown in Table 1.

**Table 1. Influenza viruses from sentinel surveillance for August by DHB**

Antigenic strain	DHB															Total
	NL	WM	WK	LS	BP	TW	TK	HB	WG	MC	CC	NM	CB	SC	SN	
A (not sub-typed)	1	1	1	1	0	0	2	0	0	0	1	0	0	0	0	7
A(H1N1)pdm09	0	0	0	0	0	0	0	0	0	0	0	0	4	1	1	6
A(H3N2)	0	1	0	0	2	0	0	0	0	0	2	0	1	0	0	6
A/Victoria/361/2011 (H3N2)	0	1	0	0	0	0	0	0	0	0	0	0	0	1	0	2
B (lineage not determined)	3	0	0	0	0	1	2	3	3	2	1	1	2	0	0	18
B/Wisconsin/1/2010-like	0	0	2	0	0	0	1	0	0	1	2	0	0	0	0	6
<b>Total</b>	<b>4</b>	<b>3</b>	<b>3</b>	<b>1</b>	<b>2</b>	<b>1</b>	<b>5</b>	<b>3</b>	<b>3</b>	<b>3</b>	<b>6</b>	<b>1</b>	<b>7</b>	<b>2</b>	<b>1</b>	<b>45</b>

In addition, 1056 swabs were received by virology laboratories from non-sentinel surveillance. Of these, 503 influenza viruses were identified: B (207) including 29 B/Wisconsin/1/2010-like viruses, A(H3N2) (160) including 37 A/Victoria/361/2011 (H3N2)-like viruses, A (not sub-typed) (110), and A(H1N1)pdm09 (26) including three A/California/7/2009 (H1N1)-like viruses. The distribution by DHB is shown in Table 2.

**Table 2. Influenza viruses from non-sentinel surveillance for August by DHB**

Antigenic strain	DHB										Total
	WM	AK	CM	WK	LS	BP	TK	MC	CC	CB	
A (not sub-typed)	5	91	4	4	0	0	0	0	6	0	<b>110</b>
A(H1N1)pdm09	2	2	8	3	0	0	0	0	0	8	<b>23</b>
A/California/7/2009 (H1N1)-like	0	1	0	0	0	0	0	0	2	0	<b>3</b>
A(H3N2)	11	48	57	3	0	0	0	0	0	4	<b>123</b>
A/Victoria/361/2011 (H3N2)	0	28	8	0	0	1	0	0	0	0	<b>37</b>
B (lineage not determined)	6	77	30	18	2	2	2	4	24	13	<b>178</b>
B/Wisconsin/1/2010-like	0	18	5	4	0	1	0	0	1	0	<b>29</b>
<b>Total</b>	<b>24</b>	<b>265</b>	<b>112</b>	<b>32</b>	<b>2</b>	<b>4</b>	<b>2</b>	<b>4</b>	<b>33</b>	<b>25</b>	<b>503</b>

**Table 3. DHB codes and Descriptions**

DHB code	DHB
NL	Northland
WM	Waitemata
AK	Auckland
CM	Counties Manukau
WK	Waikato
LS	Lakes
BP	Bay of Plenty
TW	Tairāwhiti
TK	Taranaki
HB	Hawke's Bay
WG	Whanganui
MC	MidCentral
WR	Wairarapa
HU	Hutt Valley
CC	Capital and Coast
NM	Nelson Marlborough
WC	West Coast
CB	Canterbury
SC	South Canterbury
SN	Southern

Compiled by:

**Liza Lopez**

Health Intelligence Team  
 ESR Kenepuru Science Centre  
 PO Box 50 348, Porirua  
 T: 04 914 0647 F: 04 978 6690 E: [liza.lopez@esr.cri.nz](mailto:liza.lopez@esr.cri.nz)

**Dr. Sue Huang**

WHO National Influenza Centre  
 ESR Wallaceville Science Centre  
 PO Box 40158, Upper Hutt