

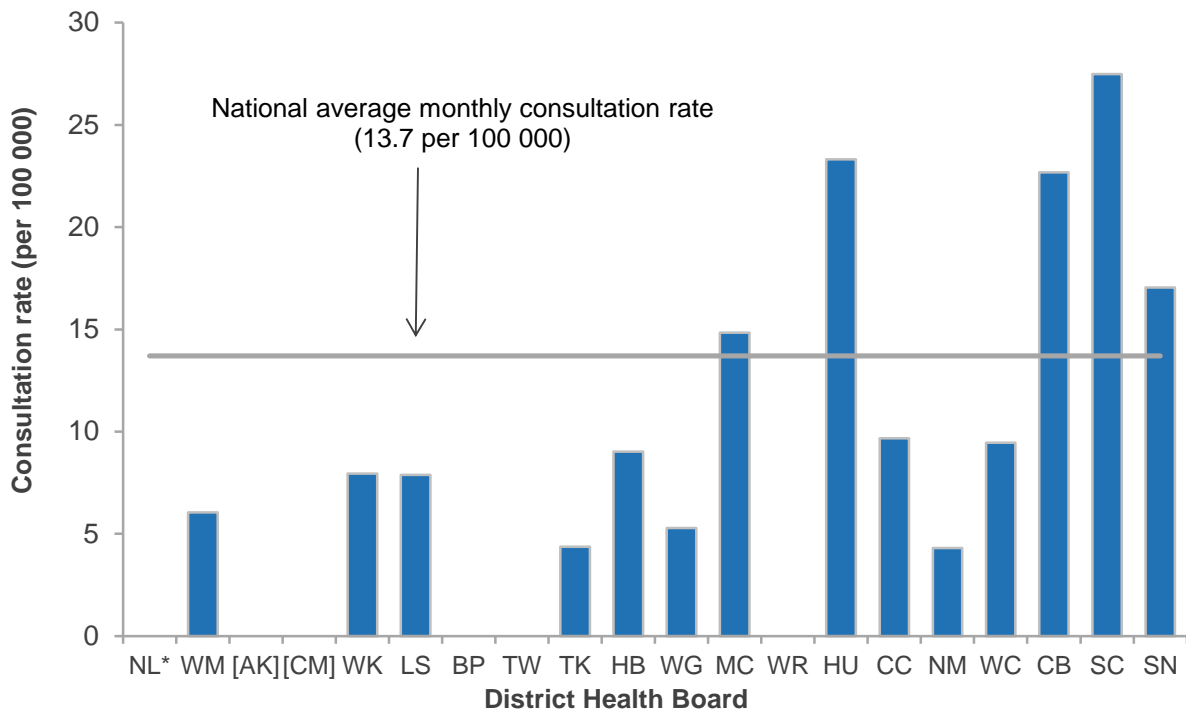


# INFLUENZA SURVEILLANCE SUMMARY - MAY 2014

During May (weeks 18–21), 159 consultations for influenza-like illness were reported from 55 general practices (on average) in 17 of the 20 District Health Boards (DHB). The average monthly consultation rate for May was 13.7 per 100 000 patient population.

Figure 1 compares the average monthly consultation rates for influenza-like illness for each DHB during May. South Canterbury had the highest consultation rate (27.5 per 100 000, 7 cases), followed by Hutt Valley (23.3 per 100 000, 14 cases) and Canterbury (22.7 per 100 000, 58 cases).

**Figure 1: Average monthly consultation rates for influenza-like illness by DHB, May 2014**



\* No data for the month.

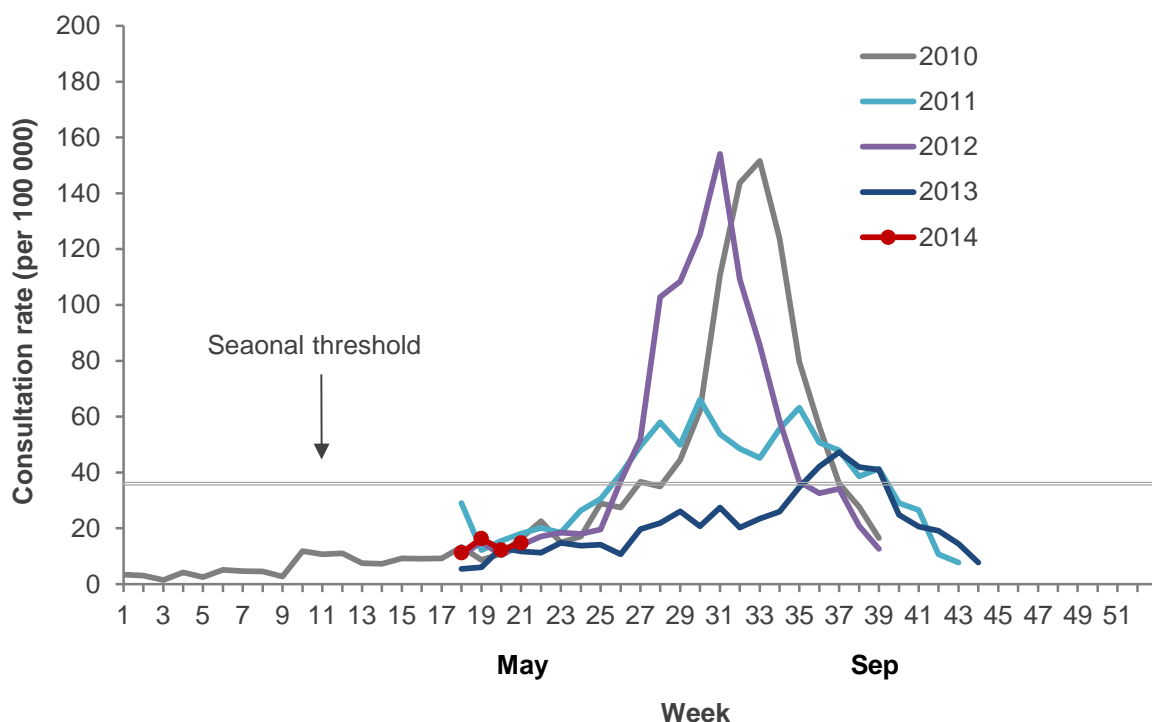
[ ] Not participating in the influenza sentinel surveillance.

Note: Auckland (AK) and Counties Manukau (CM) DHBs follow the Southern Hemisphere Influenza and Vaccine Effectiveness Research and Surveillance (SHIVERS) case definition which is different from this sentinel surveillance. Based on the SHIVERS weekly report, the ILI incidence for Auckland and Counties Manukau DHBs for May were 18.3 per 100 000 and 17.4 per 100 000 patient populations, respectively. For more details, please refer to the website:

<http://www.esr.cri.nz/competencies/shivers/Pages/SHIVERSReports.aspx>

Figure 2 shows the national weekly consultation rates to the end of week 21, May 2014 in comparison to the previous years, 2010–2013.

**Figure 2: Weekly consultation rates for influenza-like illness in New Zealand, 2010–2014**



## VIROLOGICAL SURVEILLANCE

A total of 71 swabs were received by virology laboratories from sentinel surveillance. Eleven influenza viruses were identified: A(H1N1)pdm09 (7) including one A/California/7/2009 (H1N1)-like, A (not sub-typed) (2), A(H3N2) (1) and B (not antigenically typed) (1). The distribution by DHB is shown in Table 1.

**Table 1: Influenza viruses from sentinel surveillance for May by DHB**

Antigenic Strain	DHB			Total
	WK	CB	SN	
A (not sub-typed)	2	0	0	2
A(H1N1)pdm09	0	5	1	6
A/California/7/2009 (H1N1)-like	0	0	1	1
A(H3N2)	0	1	0	1
B (not antigenically typed)	0	1	0	1
<b>Total</b>	<b>2</b>	<b>7</b>	<b>2</b>	<b>11</b>

In addition, 699 swabs were received by virology laboratories from non-sentinel surveillance. Of these, 55 influenza viruses were identified: A (not sub-typed) (27), A(H1N1)pdm09 (15) including one A/California/7/2009 (H1N1)-like, B (7) including two B/Brisbane/60/2008-like and two B/Wisconsin/1/2010-like, and A(H3N2) (6). The distribution by DHB is shown in Table 2.

**Table 2: Influenza viruses from non-sentinel surveillance for May by DHB**

Antigenic Strain	DHB											Total
	AK	CM	WK	BP	HB	MC	HU	CC	NM	CB	SN	
A (not sub-typed)	1	0	9	2	0	0	0	15	0	0	0	<b>27</b>
A(H1N1)pdm09	0	2	0	0	0	2	0	0	1	6	3	<b>14</b>
A/California/7/2009 (H1N1)-like	0	0	0	0	1	0	0	0	0	0	0	<b>1</b>
A(H3N2)	3	0	1	0	0	0	1	0	0	1	0	<b>6</b>
B (not antigenically typed)	0	2	0	0	0	0	0	0	0	1	0	<b>3</b>
B/Brisbane/60/2008-like	1	1	0	0	0	0	0	0	0	0	0	<b>2</b>
B/Wisconsin/1/2010-like	2	0	0	0	0	0	0	0	0	0	0	<b>2</b>
<b>Total</b>	<b>7</b>	<b>5</b>	<b>10</b>	<b>2</b>	<b>1</b>	<b>2</b>	<b>1</b>	<b>15</b>	<b>1</b>	<b>8</b>	<b>3</b>	<b>55</b>

**Table 3: DHB codes and Descriptions**

DHB code	DHB
NL	Northland
WM	Waitemata
AK	Auckland
CM	Counties Manukau
WK	Waikato
LS	Lakes
BP	Bay of Plenty
TW	Tairāwhiti
TK	Taranaki
HB	Hawke's Bay
WG	Whanganui
MC	MidCentral
WR	Wairarapa
HU	Hutt Valley
CC	Capital and Coast
NM	Nelson Marlborough
WC	West Coast
CB	Canterbury
SC	South Canterbury
SN	Southern

Compiled by:

**Liza Lopez**Health Intelligence Team  
ESR Kenepuru Science Centre  
PO Box 50 348, PoriruaT: 04 914 0647 F: 04 978 6690 E: [liza.lopez@esr.cri.nz](mailto:liza.lopez@esr.cri.nz)**Dr. Sue Huang**WHO National Influenza Centre  
ESR Wallaceville Science Centre  
PO Box 40158, Upper Hutt