

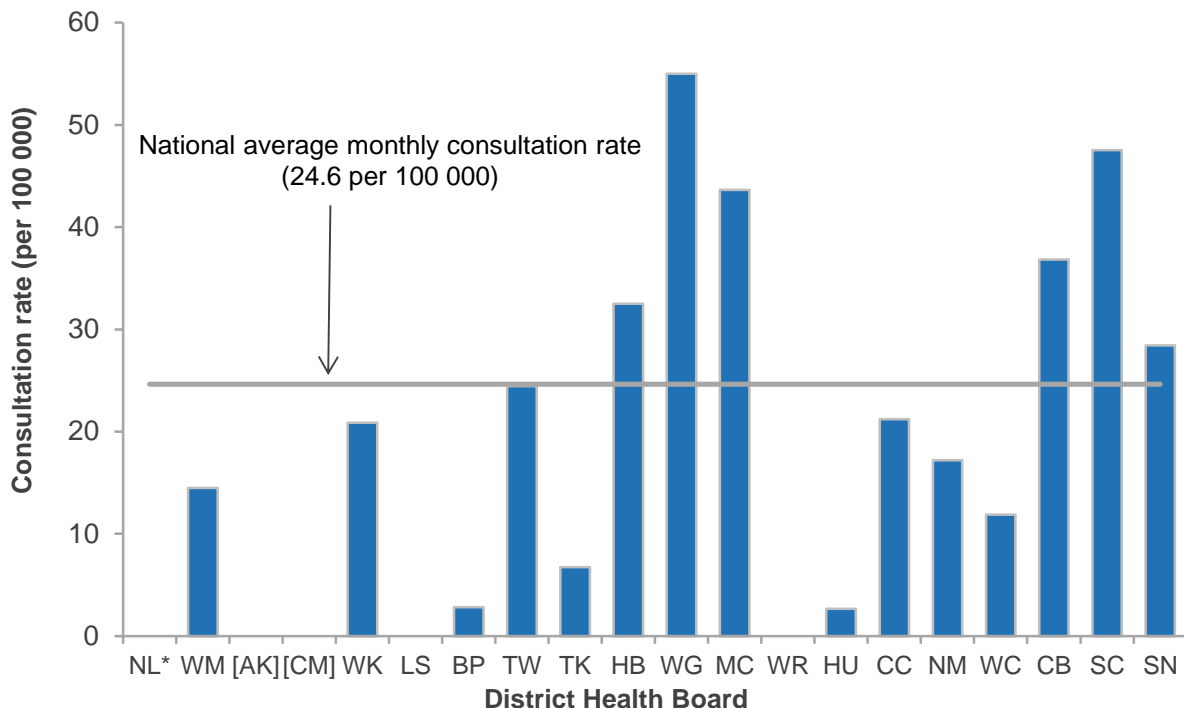


# INFLUENZA SURVEILLANCE SUMMARY - JUNE 2014

During June (weeks 22–26), 360 consultations for influenza-like illness were reported from 56 general practices (on average) in 17 of the 20 District Health Boards (DHB). The average monthly consultation rate for June was 24.6 per 100 000 patient population.

Figure 1 compares the average monthly consultation rates for influenza-like illness for each DHB during June. Whanganui had the highest consultation rate (55.0 per 100 000, 13 cases), followed by South Canterbury (47.5 per 100 000, 19 cases) and MidCentral (43.7 per 100 000, 19 cases).

**Figure 1: Average monthly consultation rates for influenza-like illness by DHB, June 2014**

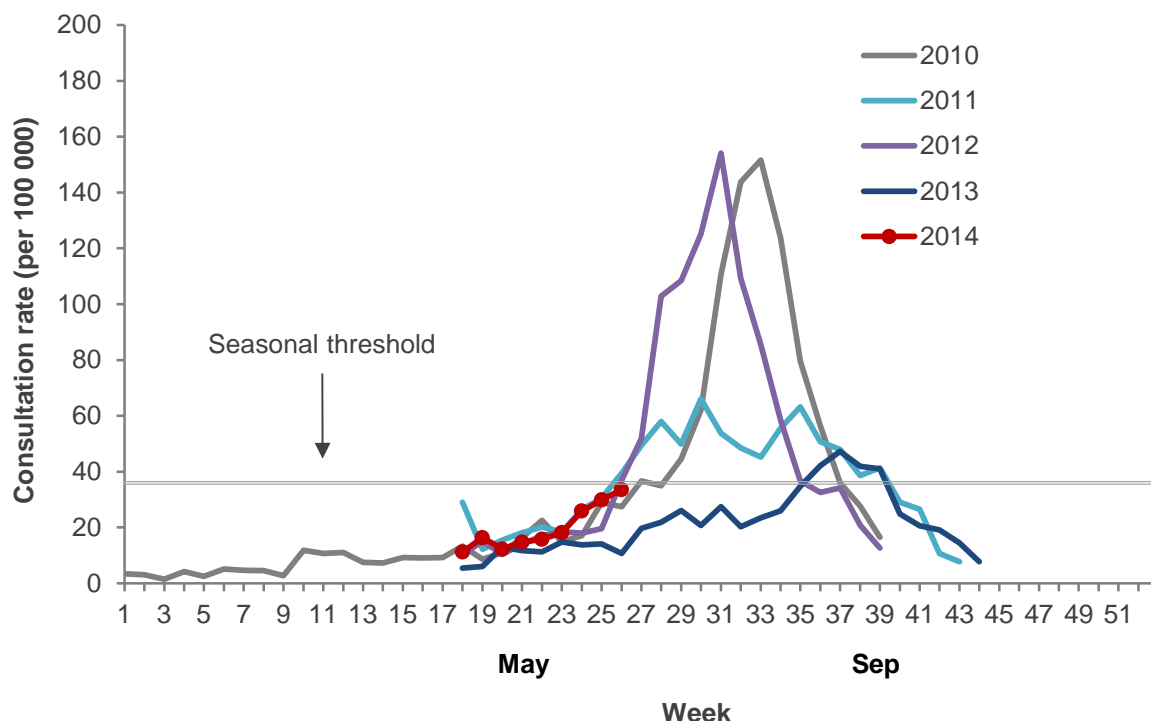


\* Not participating in the influenza sentinel surveillance.

[ ] Participating in SHIVERS. Based on the SHIVERS weekly report, the ILI incidence for Auckland and Counties Manukau DHBs for June were 179.2 per 100 000 and 142.2 per 100 000 patient populations, respectively. For more details, please refer to the website: <http://www.esr.cri.nz/competencies/shivers/Pages/SHIVERSReports.aspx>

Figure 2 shows the national weekly consultation rates to the end of week 26, June 2014 in comparison to the previous years, 2010–2013.

**Figure 2: Weekly consultation rates for influenza-like illness in New Zealand, 2010–2014**



## VIROLOGICAL SURVEILLANCE

A total of 158 swabs were received by virology laboratories from sentinel surveillance. Thirty-eight influenza viruses were identified: A(H1N1)pdm09 (35) including eight A/California/7/2009 (H1N1)-like, A (not sub-typed) (2), and B (not lineage typed) (1). The distribution by DHB is shown in Table 1.

**Table 1: Influenza viruses from sentinel surveillance for June by DHB**

Antigenic strain	DHB								Total
	WK	HB	WG	MC	CC	NM	CB	SN	
A (not sub-typed)	2	0	0	0	0	0	0	0	2
A(H1N1)pdm09	0	0	5	1	1	0	18	2	27
A/California/7/2009	0	1	3	0	0	2	0	2	8
B (not lineage type)	0	0	0	0	1	0	0	0	1
<b>Total</b>	<b>2</b>	<b>1</b>	<b>8</b>	<b>1</b>	<b>2</b>	<b>2</b>	<b>18</b>	<b>4</b>	<b>38</b>

In addition, 1223 swabs were received by virology laboratories from non-sentinel surveillance. Of these, 258 influenza viruses were identified: A(H1N1)pdm09 (154) including 40 A/California/7/2009 (H1N1)-like, A(H3N2) (11) including two A/Victoria/361/2011 (H3N2)-like, A (not sub-typed) (82), and B (11) including four B/Wisconsin/1/2010-like viruses. The distribution by DHB is shown in Table 2.

**Table 2: Influenza viruses from non-sentinel surveillance for June by DHB**

Antigenic Strain	DHB												Total
	AK	CM	WK	LS	BP	TK	MC	CC	WC	CB	SC	SN	
A (not sub-typed)	16	0	40	3	17	0	0	6	0	0	0	0	<b>82</b>
A(H1N1)pdm09	29	14	1	0	0	1	6	2	1	41	5	14	<b>114</b>
A/California/7/2009	11	8	14	0	1	0	0	3	0	3	0	0	<b>40</b>
A(H3N2)	3	4	0	0	0	0	1	1	0	0	0	0	<b>9</b>
A/Victoria/361/2011	1	0	1	0	0	0	0	0	0	0	0	0	<b>2</b>
B (not lineage type)	2	1	0	0	0	0	1	1	0	2	0	0	<b>7</b>
B/Wisconsin/1/2010	3	1	0	0	0	0	0	0	0	0	0	0	<b>4</b>
<b>Total</b>	<b>65</b>	<b>28</b>	<b>56</b>	<b>3</b>	<b>18</b>	<b>1</b>	<b>8</b>	<b>13</b>	<b>1</b>	<b>46</b>	<b>5</b>	<b>14</b>	<b>258</b>

**Table 3: DHB codes and Descriptions**

DHB code	DHB
NL	Northland
WM	Waitemata
AK	Auckland
CM	Counties Manukau
WK	Waikato
LS	Lakes
BP	Bay of Plenty
TW	Tairāwhiti
TK	Taranaki
HB	Hawke's Bay
WG	Whanganui
MC	MidCentral
WR	Wairarapa
HU	Hutt Valley
CC	Capital and Coast
NM	Nelson Marlborough
WC	West Coast
CB	Canterbury
SC	South Canterbury
SN	Southern

Compiled by:

**Liza Lopez**

Health Intelligence Team  
ESR Kenepuru Science Centre  
PO Box 50 348, Porirua

T: 04 914 0647 F: 04 978 6690 E: [liza.lopez@esr.cri.nz](mailto:liza.lopez@esr.cri.nz)

**Dr. Sue Huang**

WHO National Influenza Centre  
ESR Wallaceville Science Centre  
PO Box 40158, Upper Hutt