

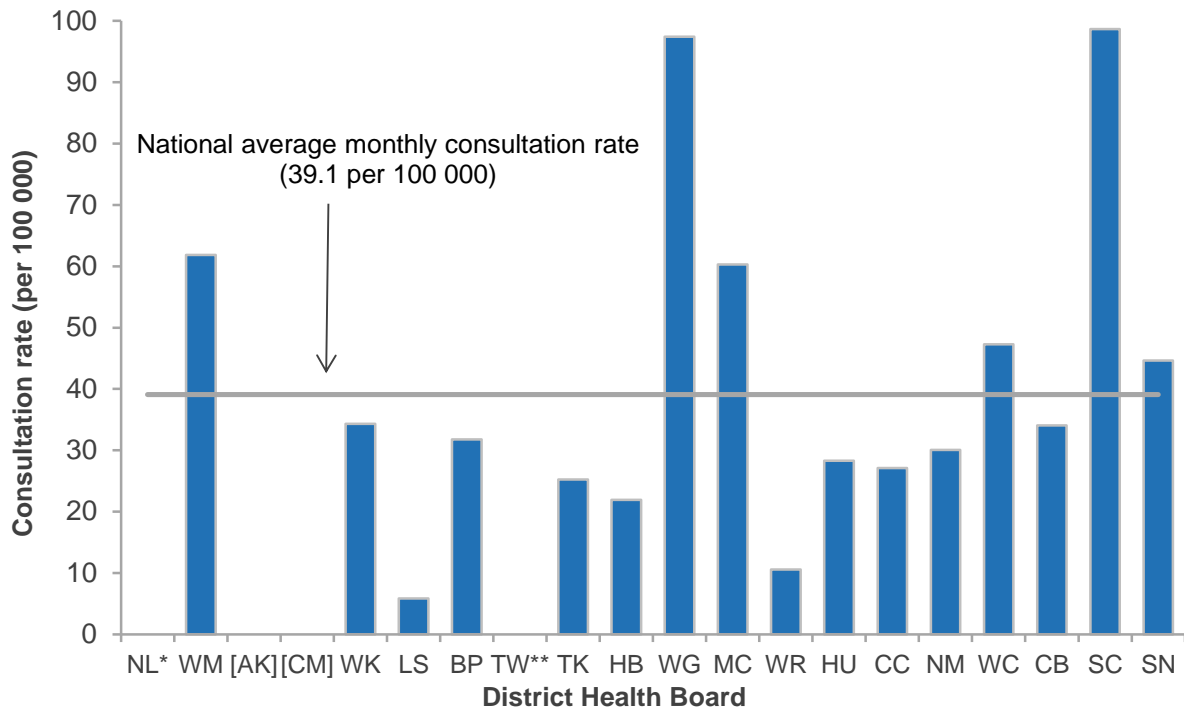


INFLUENZA SURVEILLANCE SUMMARY - JULY 2014

During July (weeks 27–30), 440 consultations for influenza-like illness were reported from 54 general practices (on average) in 16 of the 20 District Health Boards (DHB). The average monthly consultation rate for July was 39.1 per 100 000 patient population.

Figure 1 compares the average monthly consultation rates for influenza-like illness for each DHB during July. South Canterbury had the highest consultation rate (98.7 per 100 000, 30 cases), followed by Whanganui (97.4 per 100 000, 15 cases), Waitemata (61.9 per 100 000, 41 cases), and MidCentral (60.3 per 100 000, 21 cases).

Figure 1: Average monthly consultation rates for influenza-like illness by DHB, July 2014

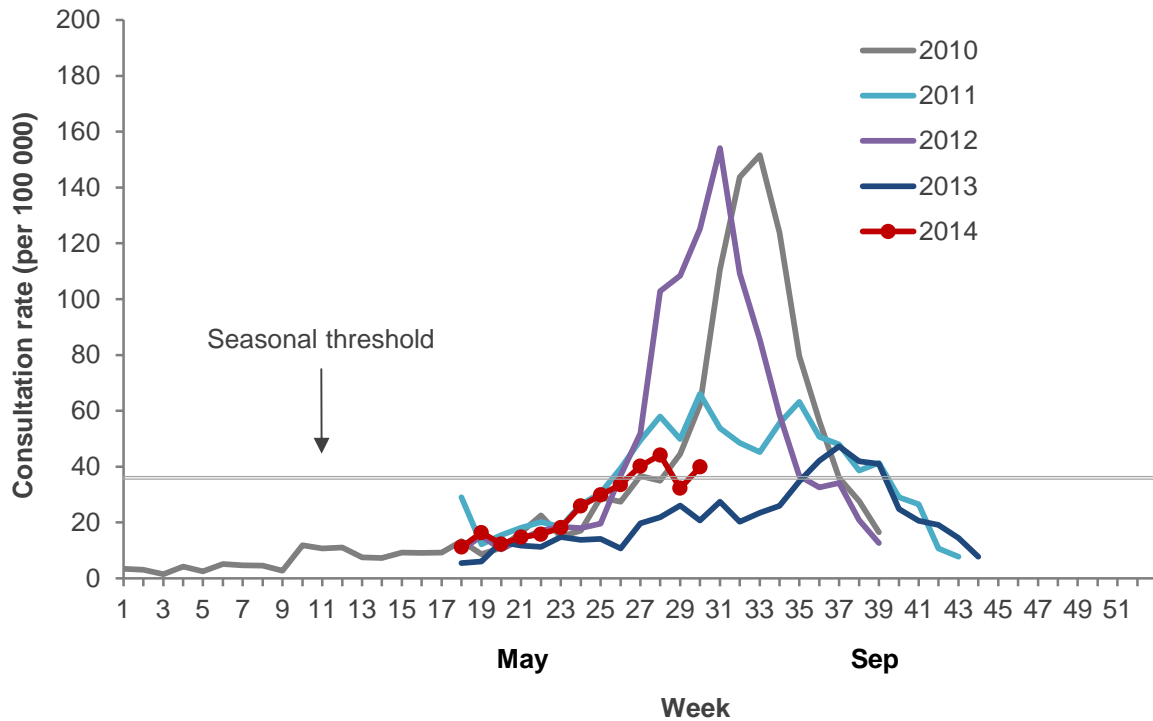


* Not participating in the influenza sentinel surveillance. **Did not participate for the month.

[] Participating in SHIVERS. Based on the SHIVERS weekly report, the ILI incidence for Auckland and Counties Manukau DHBs for July were 304.5 per 100 000 and 170.1 per 100 000 patient populations, respectively. For more details, please refer to the website: <http://www.esr.cri.nz/competencies/shivers/Pages/SHIVERSReports.aspx>

Figure 2 shows the national weekly consultation rates to the end of week 30, July 2014 in comparison to the previous years, 2010–2013.

Figure 2: Weekly consultation rates for influenza-like illness in New Zealand, 2010–2014



VIROLOGICAL SURVEILLANCE

A total of 157 swabs were received by virology laboratories from sentinel surveillance. Seventy-four influenza viruses were identified: A(H1N1)pdm09 (44) including six A/California/7/2009 (H1N1)-like, A(H3N2) (5) including one A/Texas/50/2012 (H3N2)-like virus, A (not sub-typed) (22), and B (not lineage typed) (3). The distribution by DHB is shown in Table 1.

Table 1: Influenza viruses from sentinel surveillance for July by DHB

Antigenic strain	DHB														Total
	WM	WK	LS	TW	TK	HB	WG	MC	HU	CC	NM	WC	CB	SN	
A (not sub-typed)	1	9	1	1	0	1	2	2	0	2	0	0	0	3	22
A(H1N1)pdm09	2	0	3	1	5	2	1	3	1	1	0	6	9	4	38
A/California/7/2009	0	0	0	0	1	2	0	2	0	0	1	0	0	0	6
A(H3N2)	0	0	0	0	0	0	1	0	0	1	1	0	1	0	4
A/Texas/50/2012	0	0	0	0	0	0	0	0	1	0	0	0	0	0	1
B (not lineage typed)	0	0	0	0	0	0	0	0	0	0	0	1	2	0	3
Total	3	9	4	2	6	5	4	7	2	4	2	7	12	7	74

In addition, 1794 swabs were received by virology laboratories from non-sentinel surveillance. Of these, 824 influenza viruses were identified: A(H1N1)pdm09 (441) including 58 A/California/7/2009 (H1N1)-like, A(H3N2) (57) including four A/Texas/50/2012 (H3N2)-like viruses, A (not sub-typed) (286), and B (40) including three B/Massachusetts/02/2012 viruses. The distribution by DHB is shown in Table 2.

Table 2: Influenza viruses from non-sentinel surveillance for July by DHB

Antigenic strain	DHB														Total
	WM	AK	CM	WK	LS	BP	TK	HB	MC	CC	NM	CB	SC	SN	
A (not sub-typed)	1	93	7	71	12	94	1	1	0	5	0	1	0	0	286
A(H1N1)pdm09	1	120	110	4	1	0	13	0	18	55	2	49	1	9	383
A/California/7/2009	0	23	27	6	0	0	0	0	0	2	0	0	0	0	58
A(H3N2)	0	9	14	0	0	0	1	1	1	24	0	3	0	0	53
A/Texas/50/2012	0	1	2	0	0	0	0	0	0	1	0	0	0	0	4
B (not lineage typed)	0	13	11	2	1	4	1	0	0	1	0	4	0	0	37
B/Massachusetts/02/2012	0	3	0	0	0	0	0	0	0	0	0	0	0	0	3
Total	2	262	171	83	14	98	16	2	19	88	2	57	1	9	824

Table 3: DHB codes and Descriptions

DHB code	DHB
NL	Northland
WM	Waitemata
AK	Auckland
CM	Counties Manukau
WK	Waikato
LS	Lakes
BP	Bay of Plenty
TW	Tairāwhiti
TK	Taranaki
HB	Hawke's Bay
WG	Whanganui
MC	MidCentral
WR	Wairarapa
HU	Hutt Valley
CC	Capital and Coast
NM	Nelson Marlborough
WC	West Coast
CB	Canterbury
SC	South Canterbury
SN	Southern

Compiled by:

Liza Lopez

Health Intelligence Team
ESR Kenepuru Science Centre
PO Box 50 348, Porirua

T: 04 914 0647 F: 04 978 6690 E: liza.lopez@esr.cri.nz

Dr. Sue Huang

WHO National Influenza Centre
ESR Wallaceville Science Centre
PO Box 40158, Upper Hutt