

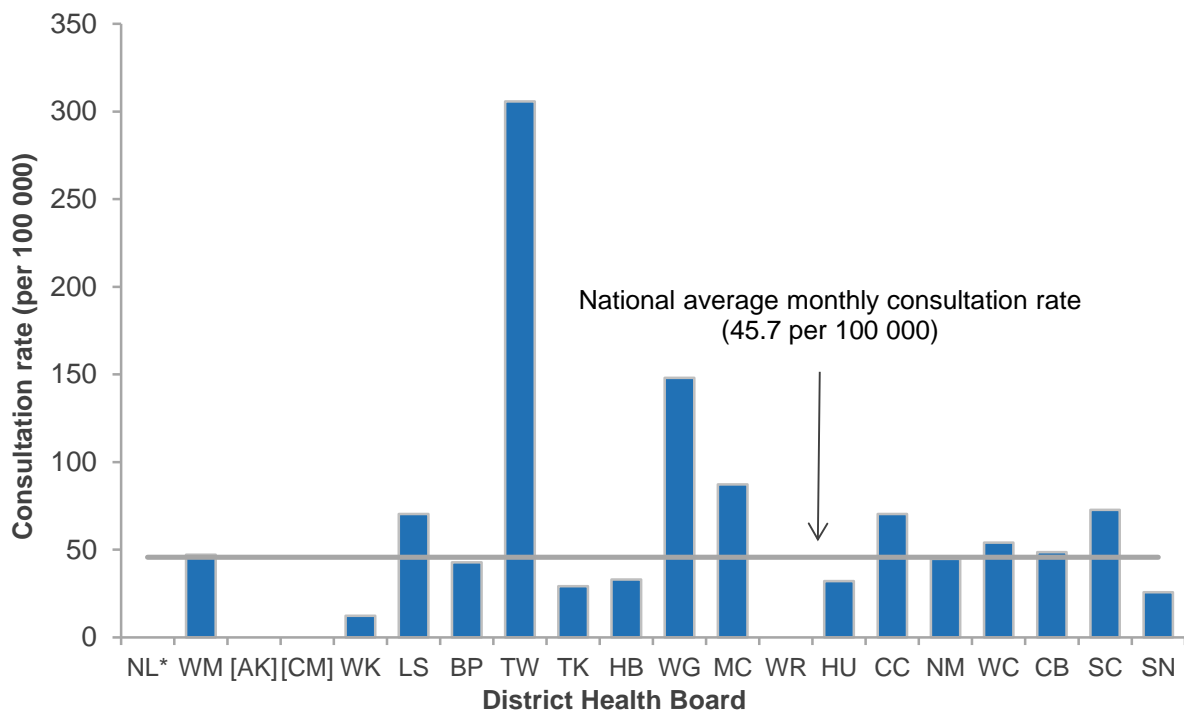


INFLUENZA SURVEILLANCE SUMMARY - AUGUST 2014

During August (weeks 31–35), 678 consultations for influenza-like illness were reported from 54 general practices (on average) in 17 of the 20 District Health Boards (DHB). The average monthly consultation rate for August was 45.7 per 100 000 patient population.

Figure 1 compares the average monthly consultation rates for influenza-like illness for each DHB during August. Tairāwhiti had the highest consultation rate (305.8 per 100 000, 25 cases), followed by Whanganui (148.1 per 100 000, 35 cases), and MidCentral (87.3 per 100 000, 38 cases).

Figure 1: Average monthly consultation rates for influenza-like illness by DHB, August 2014

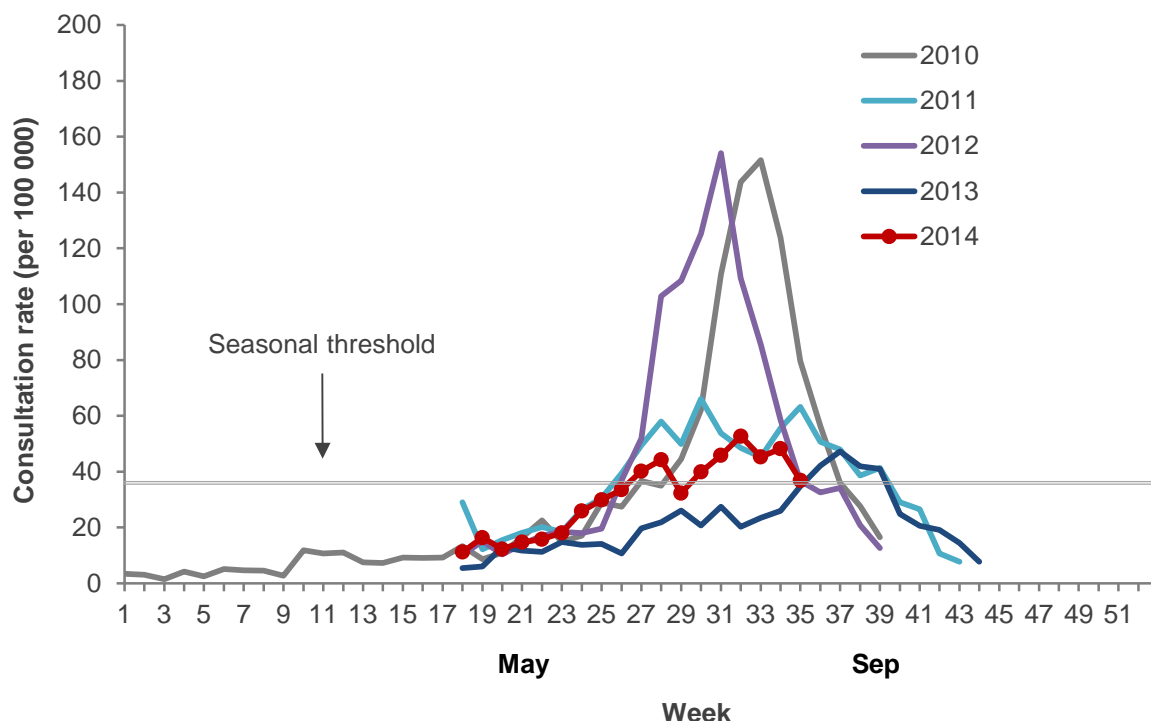


* Not participating in the influenza sentinel surveillance.

[] Participating in SHIVERS. Based on the SHIVERS weekly report, the ILI incidence for Auckland and Counties Manukau DHBs for August were 740.8 per 100 000 and 278.8 per 100 000 patient populations, respectively. For more details, please refer to the website: <http://www.esr.cri.nz/competencies/shivers/Pages/SHIVERSReports.aspx>

Figure 2 shows the national weekly consultation rates to the end of week 35, August 2014 in comparison to the previous years, 2010–2013.

Figure 2: Weekly consultation rates for influenza-like illness in New Zealand, 2010–2014



VIROLOGICAL SURVEILLANCE

A total of 230 swabs were received by virology laboratories from sentinel surveillance. One hundred and five influenza viruses were identified: A(H1N1)pdm09 (62) including eight A/California/7/2009 (H1N1)-like, A(H3N2) (11) including one A/Texas/50/2012 (H3N2)-like virus, A (not sub-typed) (24), B/Yamagata lineage (3) and B (not lineage typed) (5). The distribution by DHB is shown in Table 1.

Table 1: Influenza viruses from sentinel surveillance for August by DHB

Antigenic strain	DHB															Total
	WM	WK	LS	BP	TK	HB	WG	MC	HU	CC	WR	NM	WC	CB	SN	
A (not sub-typed)	1	4	4	0	1	3	3	0	0	6	0	2	0	0	0	24
A(H1N1)pdm09	4	0	3	1	0	2	1	1	1	9	2	2	2	24	2	54
A/California/7/2009	3	0	0	2	1	0	0	1	0	0	0	0	0	0	1	8
A(H3N2)	0	0	0	0	0	0	1	0	2	2	0	0	0	5	0	10
A/Texas/50/2012	1	0	0	0	0	0	0	0	0	0	0	0	0	0	0	1
B (not lineage typed)	1	1	0	0	0	0	0	0	1	0	0	0	0	2	0	5
B/Yamagata	0	0	0	0	0	0	0	1	1	0	0	1	0	0	0	3
Total	10	5	7	3	2	5	5	3	5	17	2	5	2	31	3	105

In addition, 3021 swabs were received by virology laboratories from non-sentinel surveillance. Of these, 1349 influenza viruses were identified: A(H1N1)pdm09 (729) including 66 A/California/7/2009 (H1N1)-like, A(H3N2) (138) including nine A/Texas/50/2012 (H3N2)-like viruses, A (not sub-typed) (350), B/Yamagata lineage (27) including 17 B/Massachusetts/02/2012-like, B/Brisbane/60/2008-like viruses (1) belonging to B/Victoria lineage, and B (not lineage typed) (104). The distribution by DHB is shown in Table 2.

Table 2: Influenza viruses from non-sentinel surveillance for August by DHB

Antigenic strain	DHB													Total
	WM	AK	CM	WK	LS	BP	TK	HB	MC	CC	CB	SC	SN	
A (not sub-typed)	4	129	16	28	26	138	0	0	0	9	0	0	0	350
A(H1N1)pdm09	4	249	190	0	0	0	30	6	6	58	118	1	1	663
A/California/7/2009	0	48	12	4	1	0	1	0	0	0	0	0	0	66
A(H3N2)	0	41	21	0	0	0	1	6	3	27	30	0	0	129
A/Texas/50/2012	0	6	3	0	0	0	0	0	0	0	0	0	0	9
B (not lineage typed)	1	45	24	4	0	3	1	1	0	12	11	1	1	104
B/Brisbane/60/2008-like	0	1	0	0	0	0	0	0	0	0	0	0	0	1
B/Massachusetts/02/2012	0	10	5	2	0	0	0	0	0	0	0	0	0	17
B/Yamagata	0	8	2	0	0	0	0	0	0	0	0	0	0	10
Total	9	537	273	38	27	141	33	13	9	106	159	2	2	1349

Table 3: DHB codes and Descriptions

DHB code	DHB
NL	Northland
WM	Waitemata
AK	Auckland
CM	Counties Manukau
WK	Waikato
LS	Lakes
BP	Bay of Plenty
TW	Tairāwhiti
TK	Taranaki
HB	Hawke's Bay
WG	Whanganui
MC	MidCentral
WR	Wairarapa
HU	Hutt Valley
CC	Capital and Coast
NM	Nelson Marlborough
WC	West Coast
CB	Canterbury
SC	South Canterbury
SN	Southern

Compiled by:

Liza Lopez

Health Intelligence Team
 ESR Kenepuru Science Centre
 PO Box 50 348, Porirua
 T: 04 914 0647 F: 04 978 6690 E: liza.lopez@esr.cri.nz

Dr. Sue Huang

WHO National Influenza Centre
 ESR Wallaceville Science Centre
 PO Box 40158, Upper Hutt