

# INFLUENZA WEEKLY UPDATE

2006/28: 10 - 14 July 2006

---

## Summary

Influenza in the population is estimated using the number of GP consultations for flu like illnesses. For 2006 this started on May 1. Current levels are low.

The health districts with the highest rate last week were Rotorua and Eastern Bay of Plenty. 60% of the cases this week were in adults aged between 20 and 64 years and 17% were in children aged 5-19 years.

So far this year 98% of the laboratory tested cases were influenza A with a small number of influenza B cases.

## Thresholds used to describe influenza-like activity\*

Term used		Consultation rate (per 100 000 population)
Baseline		<= 49
Normal seasonal activity	low	50-99
	moderate	100-149
	high	150-249
higher than expected		250-399
severe epidemic		>= 400

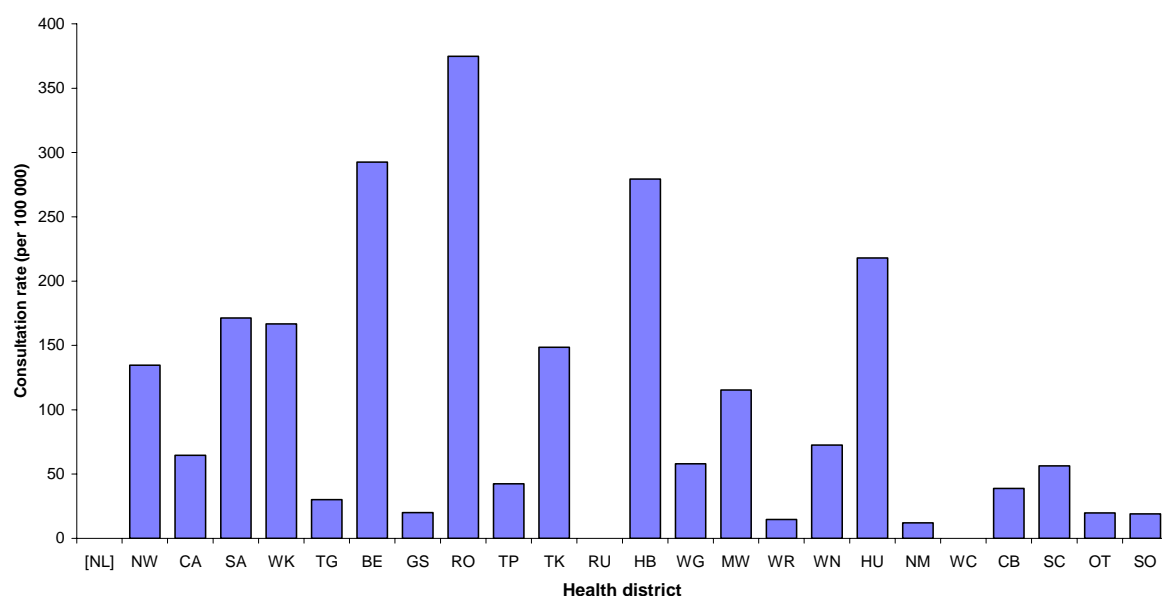
\*Note: This was published in *New Zealand Public Health Report 2001, 8(1):9-12* "Influenza surveillance and immunisation in New Zealand, 1990-1999"

In the past week, a total of 333 consultations for influenza-like illness were reported from 84 general practices in 23 out of 24 health districts. This gives a weekly consultation rate of 86.8 per 100 000 patient population.

Figure 1 compares the consultation rates for influenza-like illness for each health district over the past week. Rotorua had the highest consultation rate (374.8 per 100 000), followed by Eastern Bay of Plenty (292.5 per 100 000).

**Figure 1**

*Weekly consultation rates for influenza-like illness by health district  
week ending 14 July 2006*



[ ] Health district not participating

Seventy swabs were sent from the sentinel surveillance in the past week. Seventy swabs were received by virology laboratories. Of these, 25 influenza viruses were isolated, 13 as influenza A (yet to be sub-typed) and 12 as A/New York/55/2004 (H3N2)-like. The distribution by health district is shown in Table 1.

**Table 1.**

	NW	CA	SA	WK	TG	BE	TK	WN	CB	Total
A	1	1	0	5	0	0	0	0	6	13
A/New York/55/2004 (H3N2) - like	0	3	1	0	5	1	1	1	0	12
<b>Total</b>	<b>1</b>	<b>4</b>	<b>1</b>	<b>5</b>	<b>5</b>	<b>1</b>	<b>1</b>	<b>1</b>	<b>6</b>	<b>25</b>

In addition, 42 influenza viruses were reported this week from the laboratory-based (non-sentinel) surveillance. Forty were identified as influenza A (yet to be sub-typed) and two as A/New York/55/2004 (H3N2)-like. The distribution by health district is shown in Table 2.

**Table 2.**

	CA	SA	WK	TK	MW	CB	OT	Total
A	4	3	9	1	1	19	3	40
A/New York/55/2004 (H3N2) - like	0	2	0	0	0	0	0	2
<b>Total</b>	<b>4</b>	<b>5</b>	<b>9</b>	<b>1</b>	<b>1</b>	<b>19</b>	<b>3</b>	<b>42</b>

Figure 2 shows the cumulative total of influenza isolates confirmed (sentinel and laboratory-based surveillance) to the end of week 28, 14 July 2006. A total of 242 influenza viruses were identified, 128 as A/New York/55/2004 (H3N2) - like, 102 as influenza A (yet to be sub-typed), seven as A/California/7/2004-like, one as A/New Caledonia/20/19999 (H1N1)-like, two as B/Shanghai/361/2002-like, one as B/Hong Kong/330/2001-like, and one as B/Malaysia/2506/2004-like.

**Figure 2**

*Cumulative laboratory-confirmed isolates by health district to 14 July 2006*

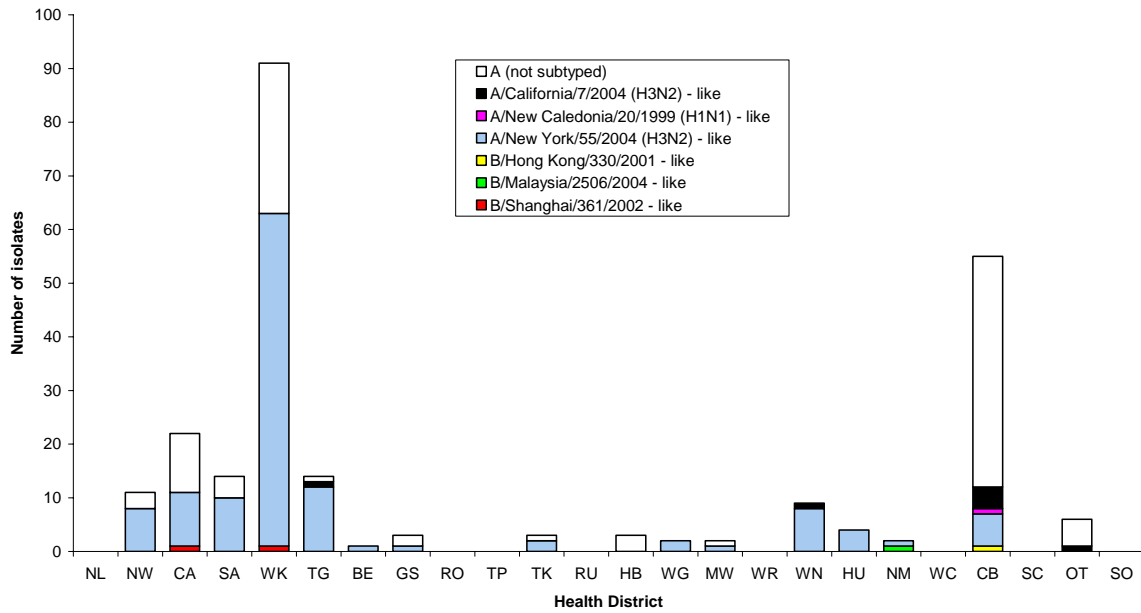


Figure 3 shows the weekly national consultation rates for 2004 and 2005 seasons, and 2006 so far.

**Figure 3**

*Weekly consultation rates for influenza-like illness in New Zealand, 2004, 2005 and 2006*

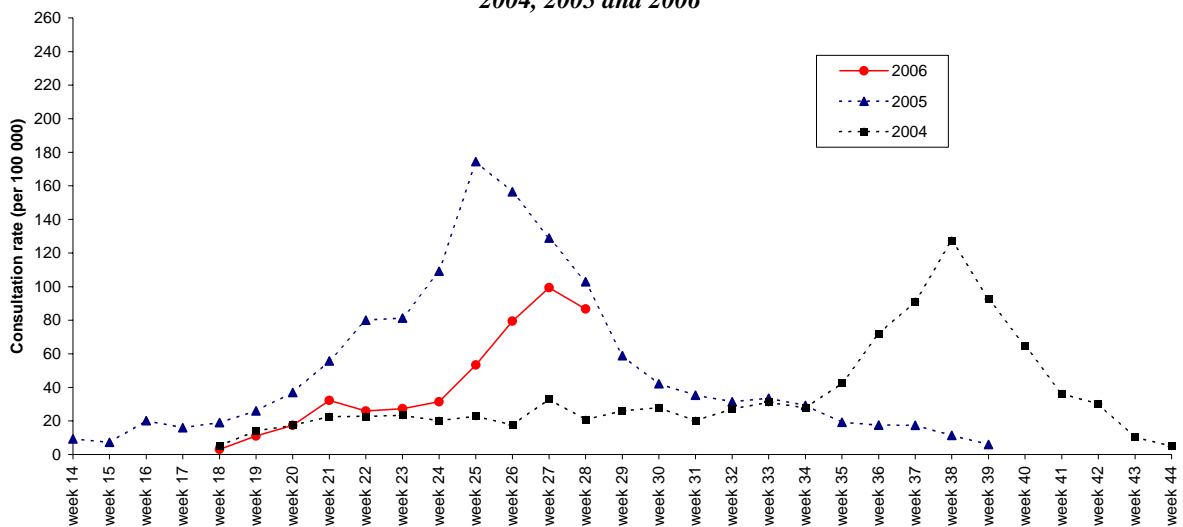
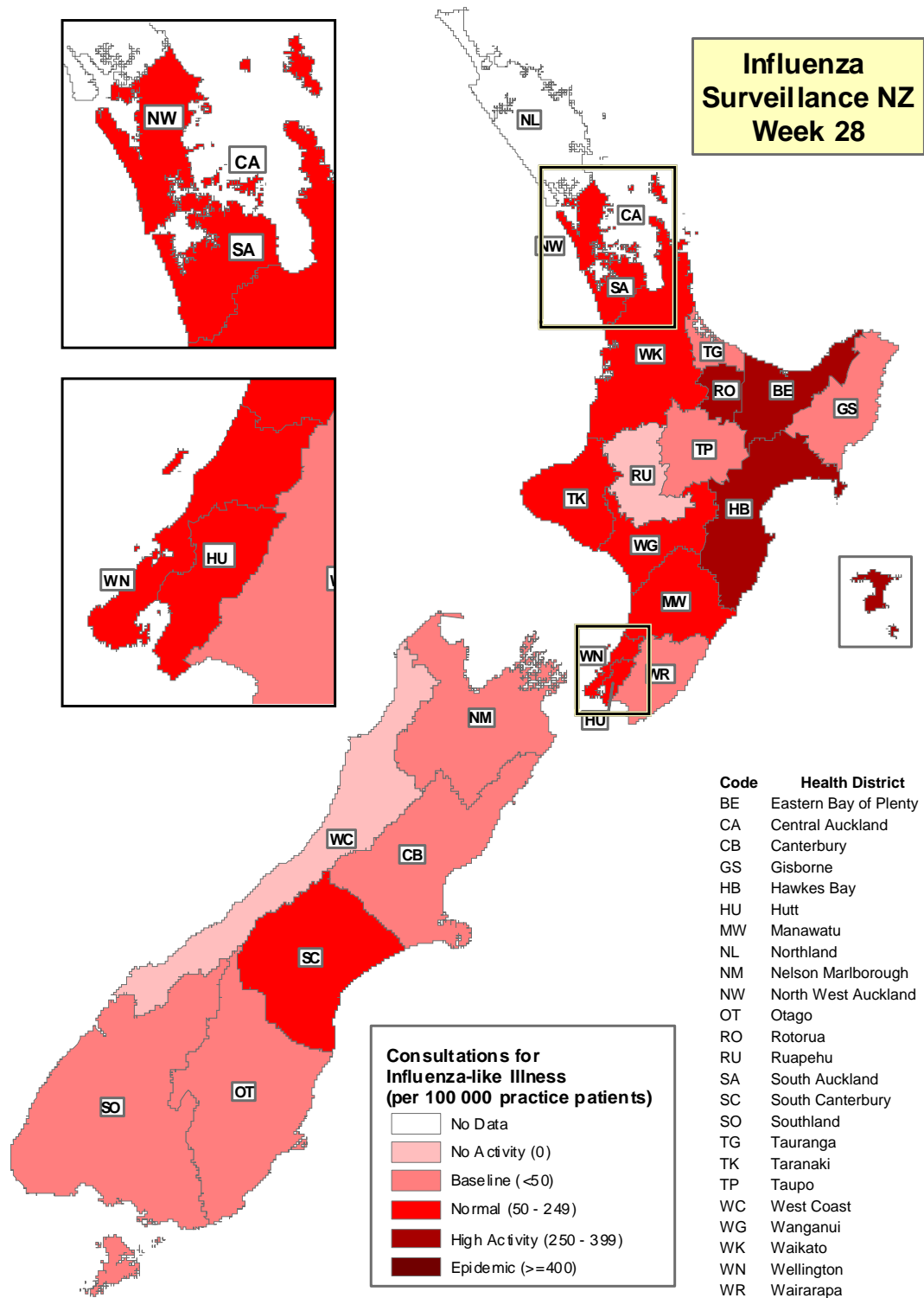


Figure 4 illustrates consultation rates for influenza-like illness mapped by health district for week 28, 2006.

Figure 4



Compiled by: Liza Lopez  
 Population and Environmental Health  
 ESR Kenepuru Science Centre  
 P O Box 50 348  
 PORIRUA

phone: 04 914-0647  
 fax: 04 914-0770  
 email: liza.lopez@esr.cri.nz