

INFLUENZA WEEKLY UPDATE

2006/30: 24-28 July 2006

Summary

Influenza in the population is estimated using the number of GP consultations for flu like illnesses. For 2006 this started on May 1. Current levels are low.

The health districts with the highest rate last week were Eastern Bay of Plenty and West Coast. 57% of the cases this week were in adults aged between 20 and 64 years and 26% were in children aged 5-19 years.

So far this year 99% of the laboratory tested cases were influenza A with a small number of influenza B cases.

Thresholds used to describe influenza-like activity*

Term used		Consultation rate (per 100 000 population)
Baseline		<= 49
Normal seasonal activity	low	50-99
	moderate	100-149
	high	150-249
higher than expected		250-399
severe epidemic		>= 400

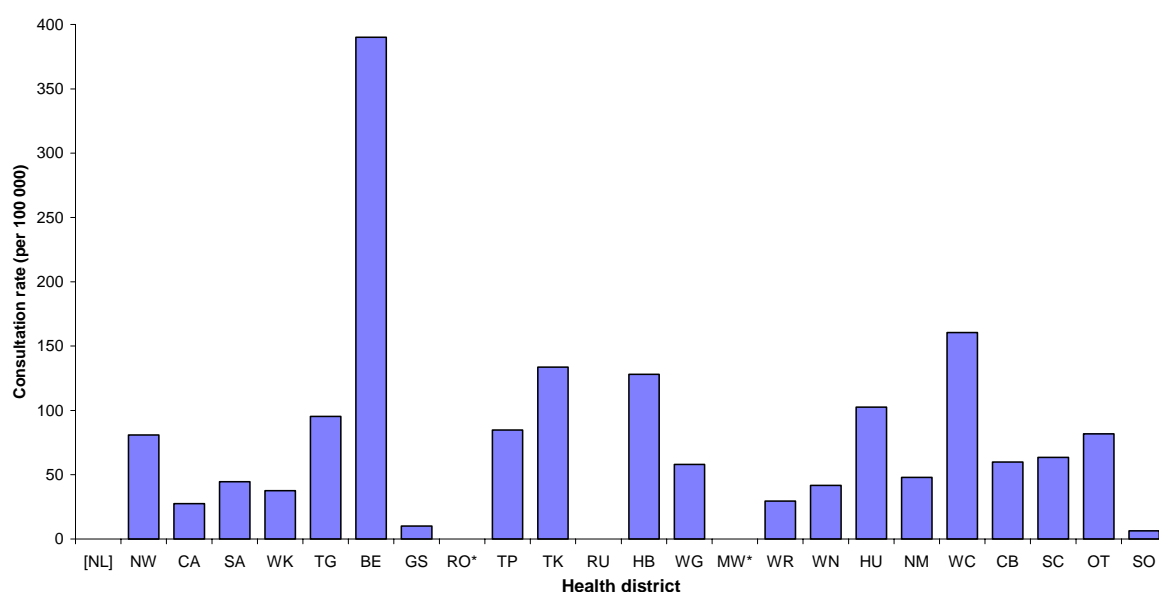
*Note: This was published in *New Zealand Public Health Report 2001, 8(1):9-12* "Influenza surveillance and immunisation in New Zealand, 1990-1999"

In the past week, a total of 218 consultations for influenza-like illness were reported from 77 general practices in 21 out of 24 health districts. This gives a weekly consultation rate of 65.9 per 100 000 patient population.

Figure 1 compares the consultation rates for influenza-like illness for each health district over the past week. Eastern Bay of Plenty had the highest consultation rate (390.1 per 100 000), followed by West Coast (160.5 per 100 000).

Figure 1

*Weekly consultation rates for influenza-like illness by health district
week ending 28 July 2006*



[] Health district not participating

* Health districts did not participate for the week

Fifty-two swabs were sent from the sentinel surveillance in the past week. Sixty-one swabs were received by virology laboratories. Of these, 47 influenza viruses were isolated, 24 as A/New York/55/2004 (H3N2)-like and 23 as influenza A (yet to be sub-typed). The distribution by health district is shown in Table 1.

Table 1.

	NW	CA	SA	WK	TG	BE	TP	TK	HB	WG	WR	WN	HU	WC	CB	OT	Total
A	1	7	4	1	0	0	0	0	0	0	0	0	0	1	8	1	23
A/New York/55/2004 (H3N2) - like	3	6	2	0	1	2	2	1	1	2	1	2	1	0	0	0	24
Total	4	13	6	1	1	2	2	1	1	2	1	2	1	1	8	1	47

In addition, 73 influenza viruses were reported this week from the laboratory-based (non-sentinel) surveillance. Sixty-seven were identified as influenza A (yet to be sub-typed) and six as A/New York/55/2004 (H3N2)-like. The distribution by health district is shown in Table 2.

Table 2.

	NW	CA	SA	WK	CB	Total
A	4	4	11	7	41	67
A/New York/55/2004 (H3N2) - like	0	3	3	0	0	6
Total	4	7	14	7	41	73

Figure 2 shows the cumulative total of influenza isolates confirmed (sentinel and laboratory-based surveillance) to the end of week 30, 28 July 2006. A total of 425 influenza viruses were identified, 223 as A/New York/55/2004 (H3N2) - like, 188 as influenza A (yet to be sub-typed), seven as A/California/7/2004-like, three as A/New Caledonia/20/19999 (H1N1)-like, two as B/Shanghai/361/2002-like, one as B/Hong Kong/330/2001-like, and one as B/Malaysia/2506/2004-like.

Figure 2

Cumulative laboratory-confirmed isolates by health district to 28 July 2006

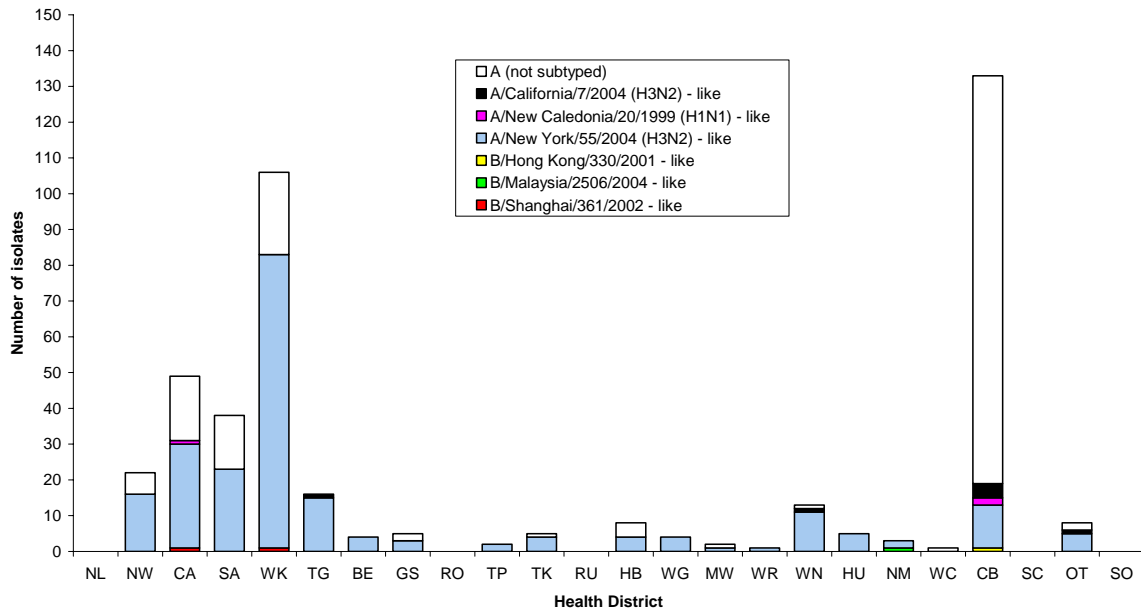


Figure 3 shows the weekly national consultation rates for influenza-like illness in New Zealand, for the 2004 and 2005 seasons, and for 2006 so far.

Figure 3

Weekly consultation rates for influenza-like illness in New Zealand, 2004, 2005 and 2006

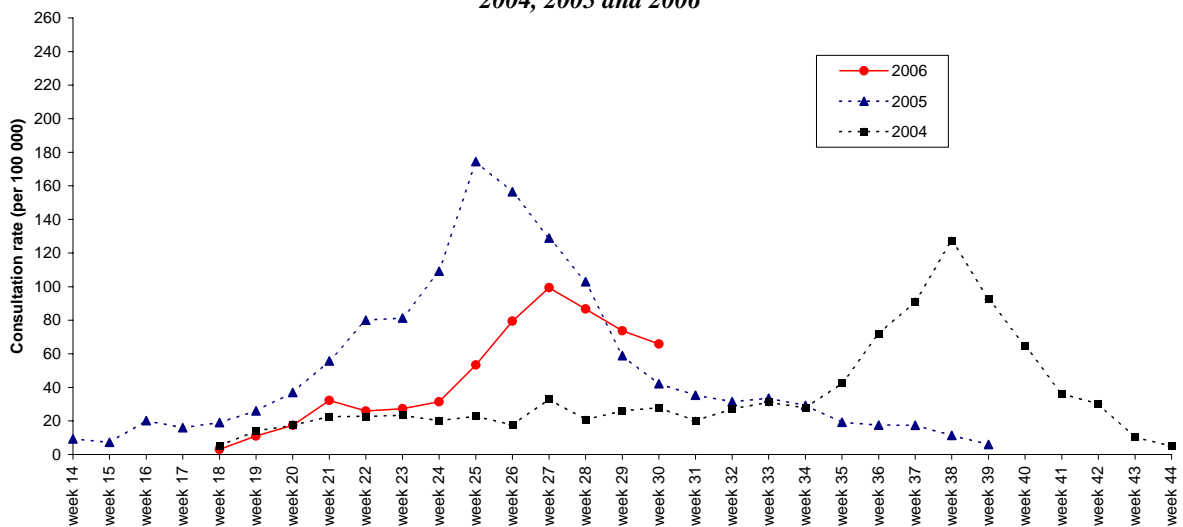
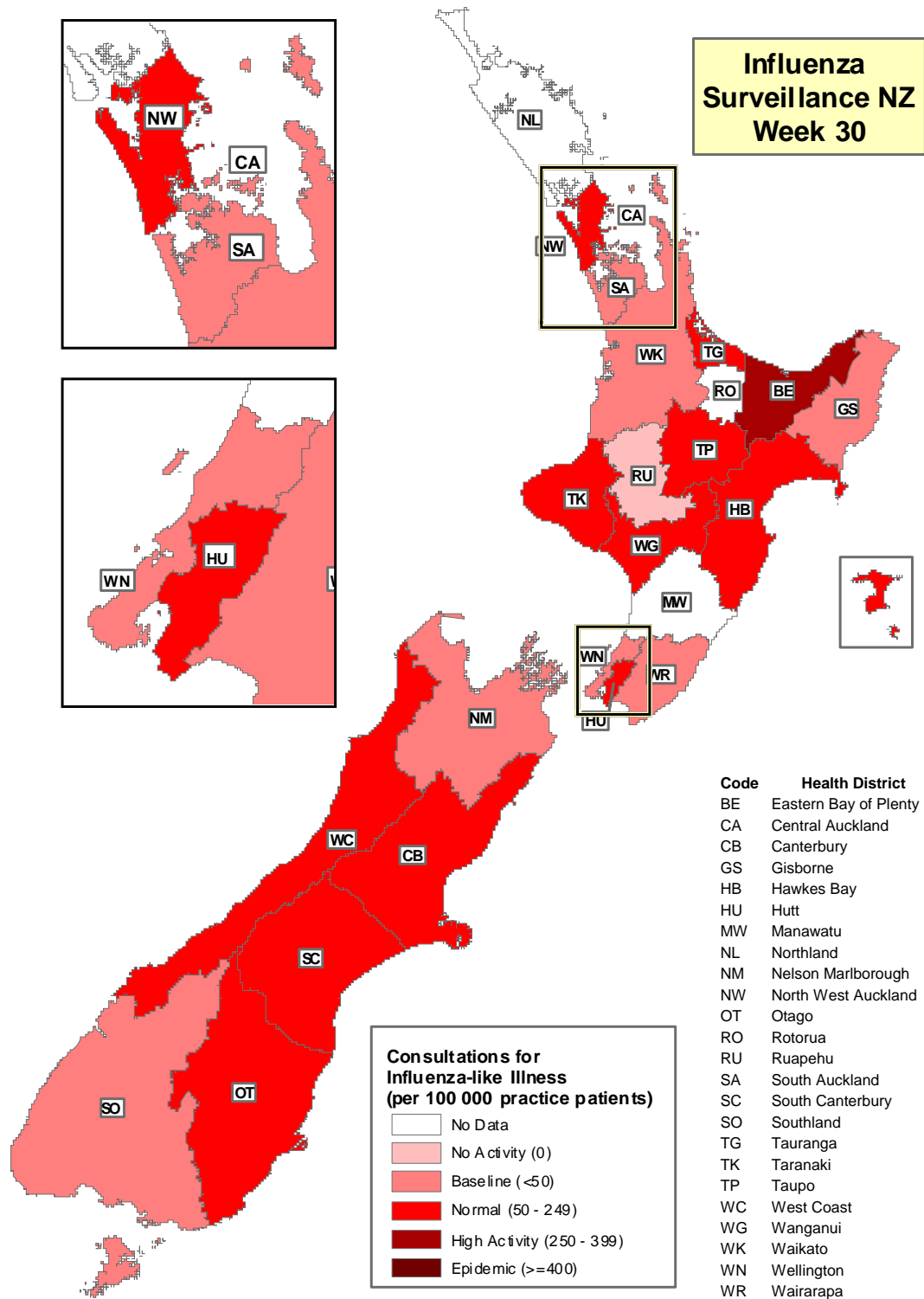


Figure 4 illustrates consultation rates for influenza-like illness mapped by health district for week 30, 2006.

Figure 4



Compiled by: Liza Lopez
 Population and Environmental Health
 ESR Kenepuru Science Centre
 P O Box 50 348
 PORIRUA

phone: 04 914-0647
 fax: 04 914-0770
 email: liza.lopez@esr.cri.nz