

# INFLUENZA WEEKLY UPDATE

2006/35: 28 August - 1 September 2006

---

## Summary

Influenza in the population is estimated using the number of GP consultations for flu like illnesses. For 2006 this started on May 1. Current levels are low and the influenza activity this week has decreased compared with the previous week.

The health districts with the highest rate last week were South Canterbury and Hawke's Bay. 56% of the cases this week were in adults aged between 20 and 64 years, 22% were in children aged 5-19 years, and 16% were in pre-schoolers aged 1-4 years.

So far this year 99% of the laboratory tested cases were influenza A with a small number of influenza B cases.

## Thresholds used to describe influenza-like activity\*

Term used		Consultation rate (per 100 000 population)
Baseline		<= 49
Normal seasonal activity	low	50-99
	moderate	100-149
	high	150-249
higher than expected		250-399
severe epidemic		>= 400

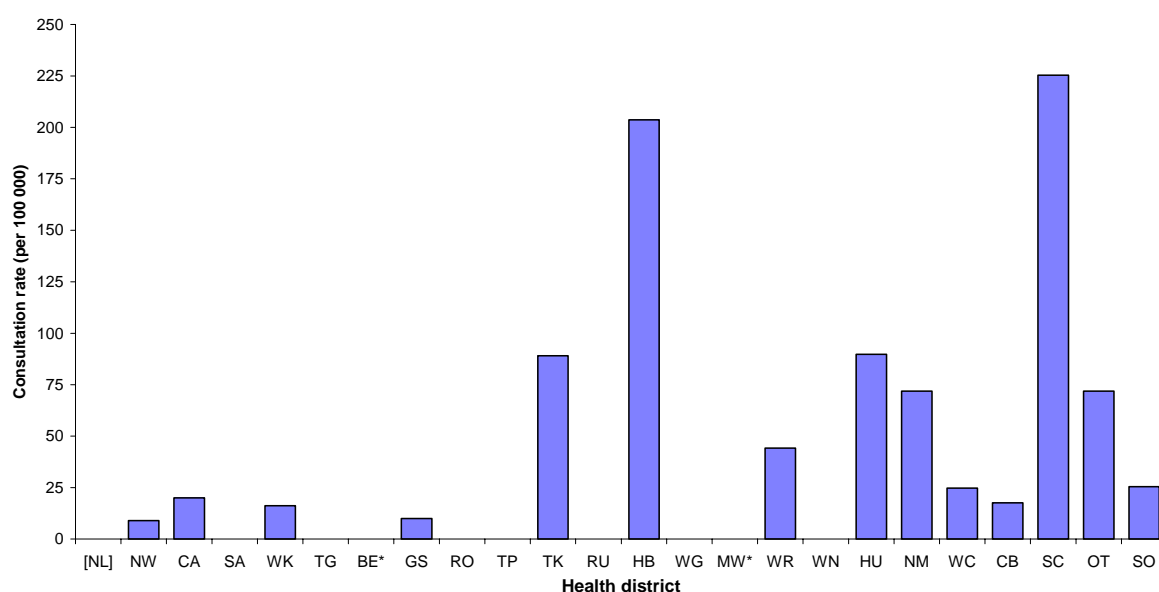
\*Note: This was published in *New Zealand Public Health Report 2001, 8(1):9-12* "Influenza surveillance and immunisation in New Zealand, 1990-1999"

In the past week, a total of 172 consultations for influenza-like illness were reported from 80 general practices in 21 out of 24 health districts. This gives a weekly consultation rate of 52.7 per 100 000 patient population.

Figure 1 compares the consultation rates for influenza-like illness for each health district over the past week. South Canterbury had the highest consultation rate (225.4 per 100 000), followed by Hawke's Bay (203.7 per 100 000).

**Figure 1**

*Weekly consultation rates for influenza-like illness by health district  
week ending 1 September 2006*



[ ] Health district not participating

\* Health districts did not participate for the week

Twenty-three swabs were sent from the sentinel surveillance in the past week. Thirty-three swabs were received by virology laboratories. Of these, 10 influenza viruses were isolated, seven as A/New York/55/2004 (H3N2)-like and three as influenza A (yet to be sub-typed). The distribution by health district is shown in Table 1.

**Table 1.**

	RO	WN	HU	NM	CB	SC	SO	Total
A	0	0	0	0	2	1	0	3
A/New York/55/2004 (H3N2) - like	1	1	1	1	0	0	3	7
<b>Total</b>	<b>1</b>	<b>1</b>	<b>1</b>	<b>1</b>	<b>2</b>	<b>1</b>	<b>3</b>	<b>10</b>

In addition, 15 influenza viruses were reported this week from the laboratory-based (non-sentinel) surveillance, 14 as influenza A (yet to be sub-typed) and one as A/New Caledonia/20/1999 (H1N1)-like. The distribution by health district is shown in Table 2.

**Table 2.**

	CA	CB	SC	OT	Total
A	0	12	1	1	14
A/New Caledonia/20/99 (H1N1) - like	1	0	0	0	1
<b>Total</b>	<b>1</b>	<b>12</b>	<b>1</b>	<b>1</b>	<b>15</b>

Figure 2 shows the cumulative total of influenza isolates confirmed (sentinel and laboratory-based surveillance) to the end of week 35, 1 September 2006. A total of 713 influenza viruses were identified, 364 as A/New York/55/2004 (H3N2) - like, 333 as influenza A (yet to be sub-typed), 11 as A/New Caledonia/20/1999 (H1N1)-like, two as B/Shanghai/361/2002-like, two as B/Malaysia/2506/2004-like, and one as influenza B (yet to be typed).

**Figure 2**

*Cumulative laboratory-confirmed isolates by health district to 1 September 2006*

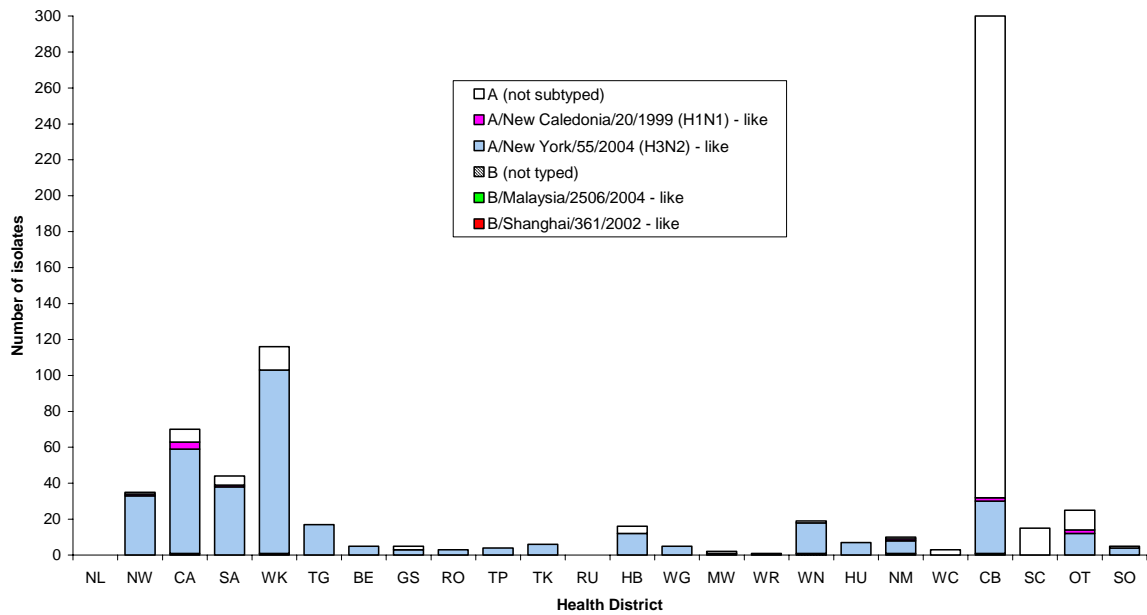


Figure 3 shows the weekly national consultation rates for 2004 and 2005 seasons, and 2006 so far.

**Figure 3**

*Weekly consultation rates for influenza-like illness in New Zealand, 2004, 2005 and 2006*

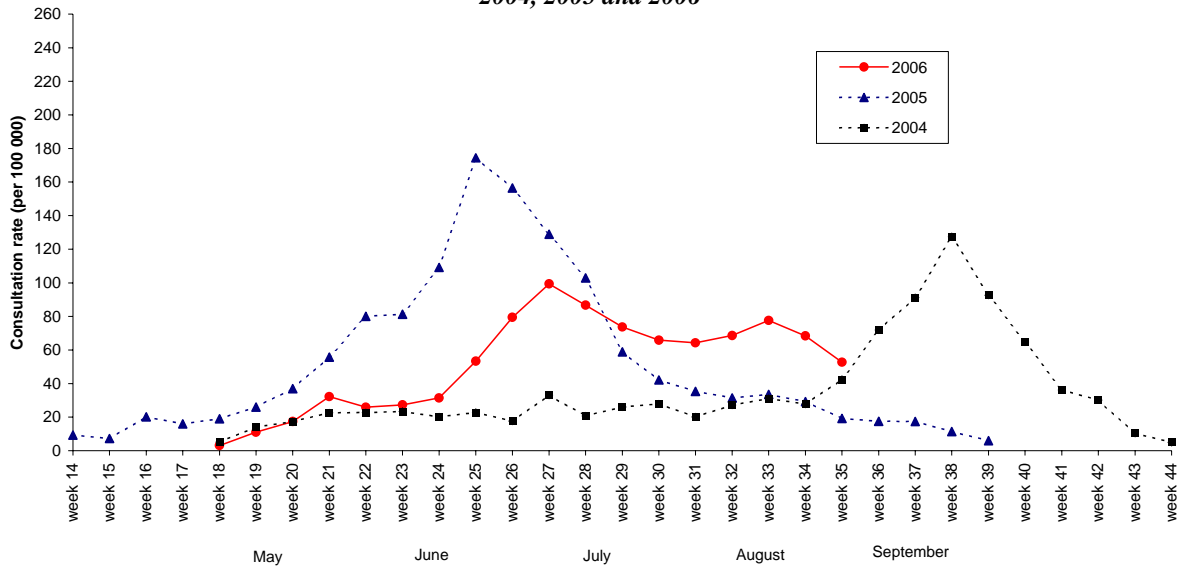
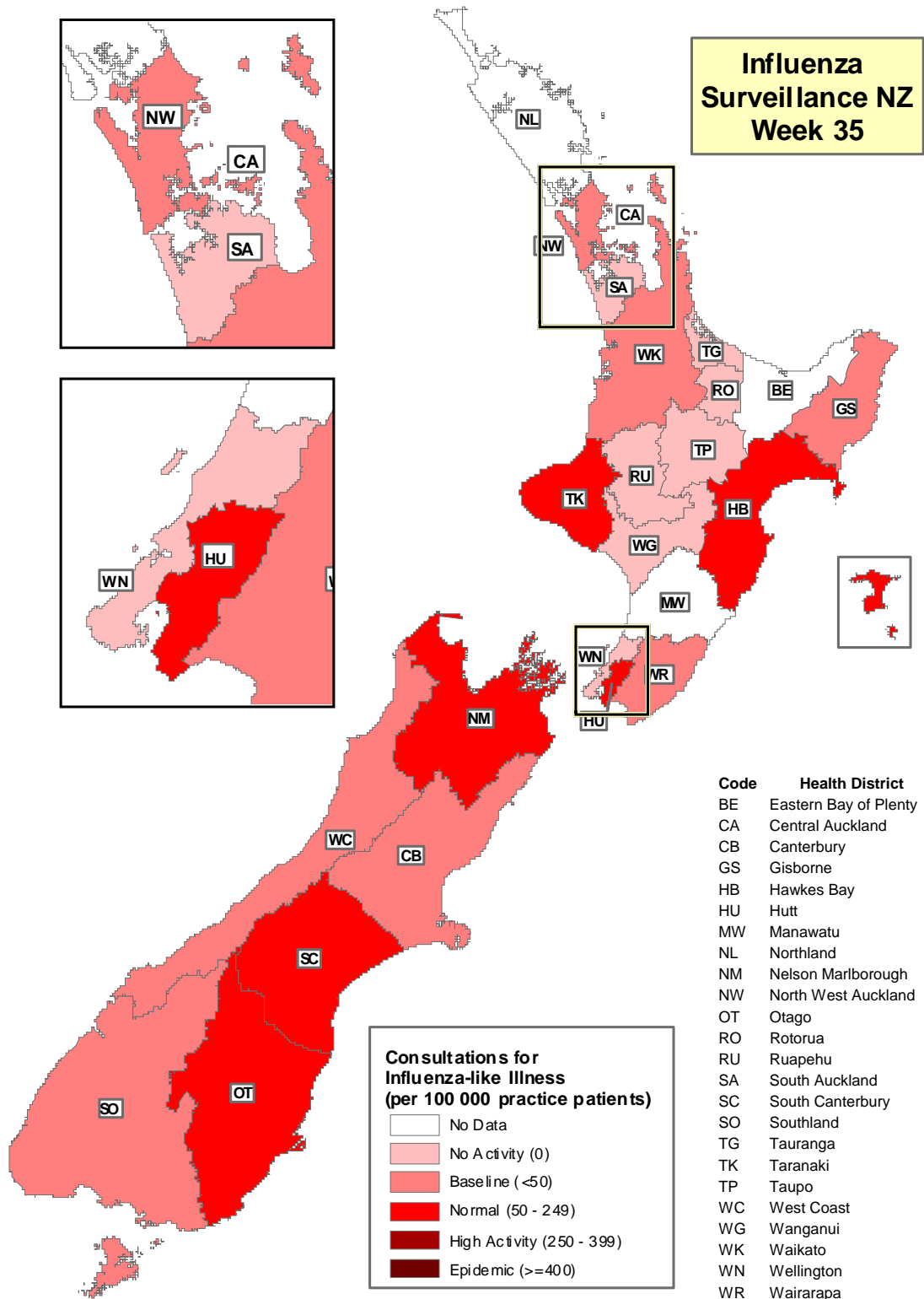


Figure 4 illustrates consultation rates for influenza-like illness mapped by health district for week 35, 2006.

**Figure 4**

**Influenza  
Surveillance NZ  
Week 35**



Code	Health District
BE	Eastern Bay of Plenty
CA	Central Auckland
CB	Canterbury
GS	Gisborne
HB	Hawkes Bay
HU	Hutt
MW	Manawatu
NL	Northland
NM	Nelson Marlborough
NW	North West Auckland
OT	Otago
RO	Rotorua
RU	Ruapehu
SA	South Auckland
SC	South Canterbury
SO	Southland
TG	Tauranga
TK	Taranaki
TP	Taupo
WC	West Coast
WG	Wanganui
WK	Waikato
WN	Wellington
WR	Wairarapa

**Consultations for  
Influenza-like illness  
(per 100 000 practice patients)**

- No Data
- No Activity (0)
- Baseline (<50)
- Normal (50 - 249)
- High Activity (250 - 399)
- Epidemic (>=400)

---

Compiled by: Liza Lopez  
 Population and Environmental Health  
 ESR Kenepuru Science Centre  
 P O Box 50 348  
 PORIRUA

phone: 04 914-0647  
 fax: 04 914-0770  
 email: liza.lopez@esr.cri.nz