

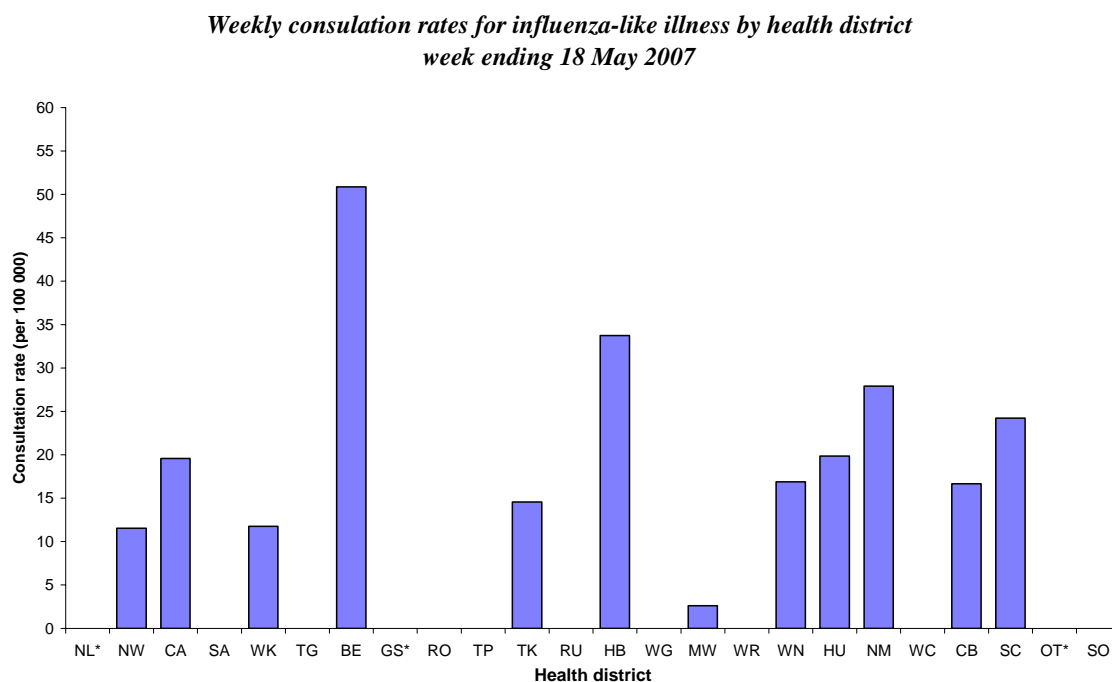
INFLUENZA WEEKLY UPDATE

2007/20: 14 - 18 May 2007

In the past week, a total of 41 consultations for influenza-like illness were reported from 73 general practices in 21 out of 24 health districts. This gives a weekly consultation rate of 14.1 per 100 000 patient population.

The graph compares the consultation rates for influenza-like illness for each health district over the past week. Eastern Bay of Plenty had the highest consultation rate (50.9 per 100 000), followed by Hawke's Bay (33.8 per 100 000).

Figure 1



*Health districts did not participate for the week

Twenty-one swabs were sent from the sentinel surveillance in the past week. Twenty-nine swabs were received by virology laboratories. One influenza A (yet to be sub-typed) was isolated from Canterbury.

Three influenza A (yet to be sub-typed) from Waikato (2) and Tauranga (1) were reported by regional virology laboratories from the laboratory-based (non-sentinel) surveillance.

Figure 2 shows the weekly national consultation rates for 2005 and 2006 seasons, and 2007 so far.

Figure 2

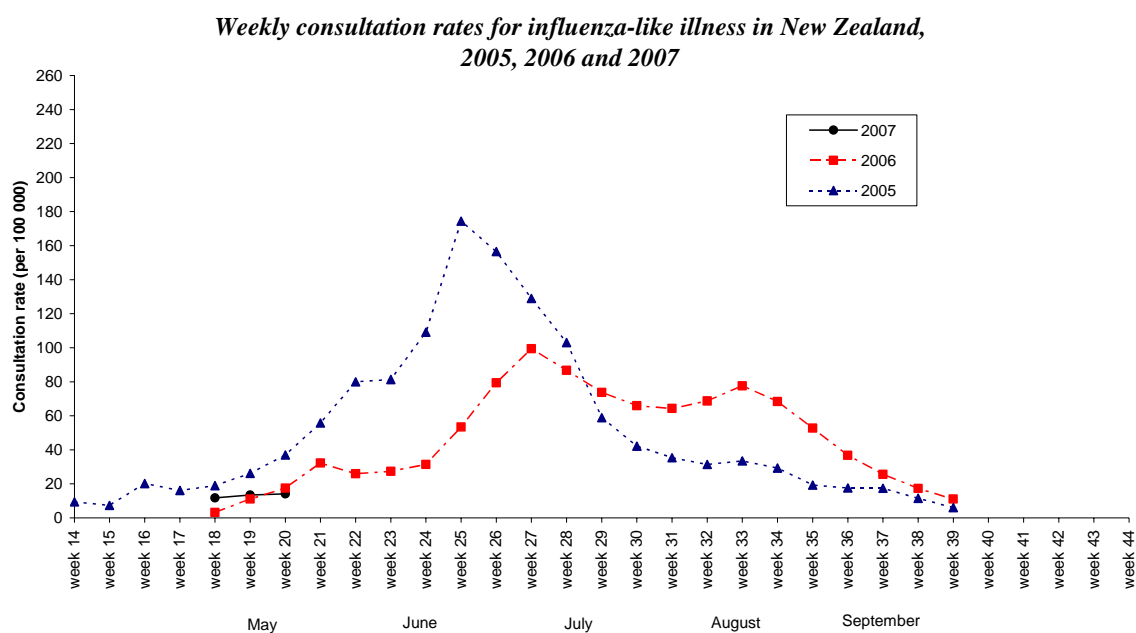
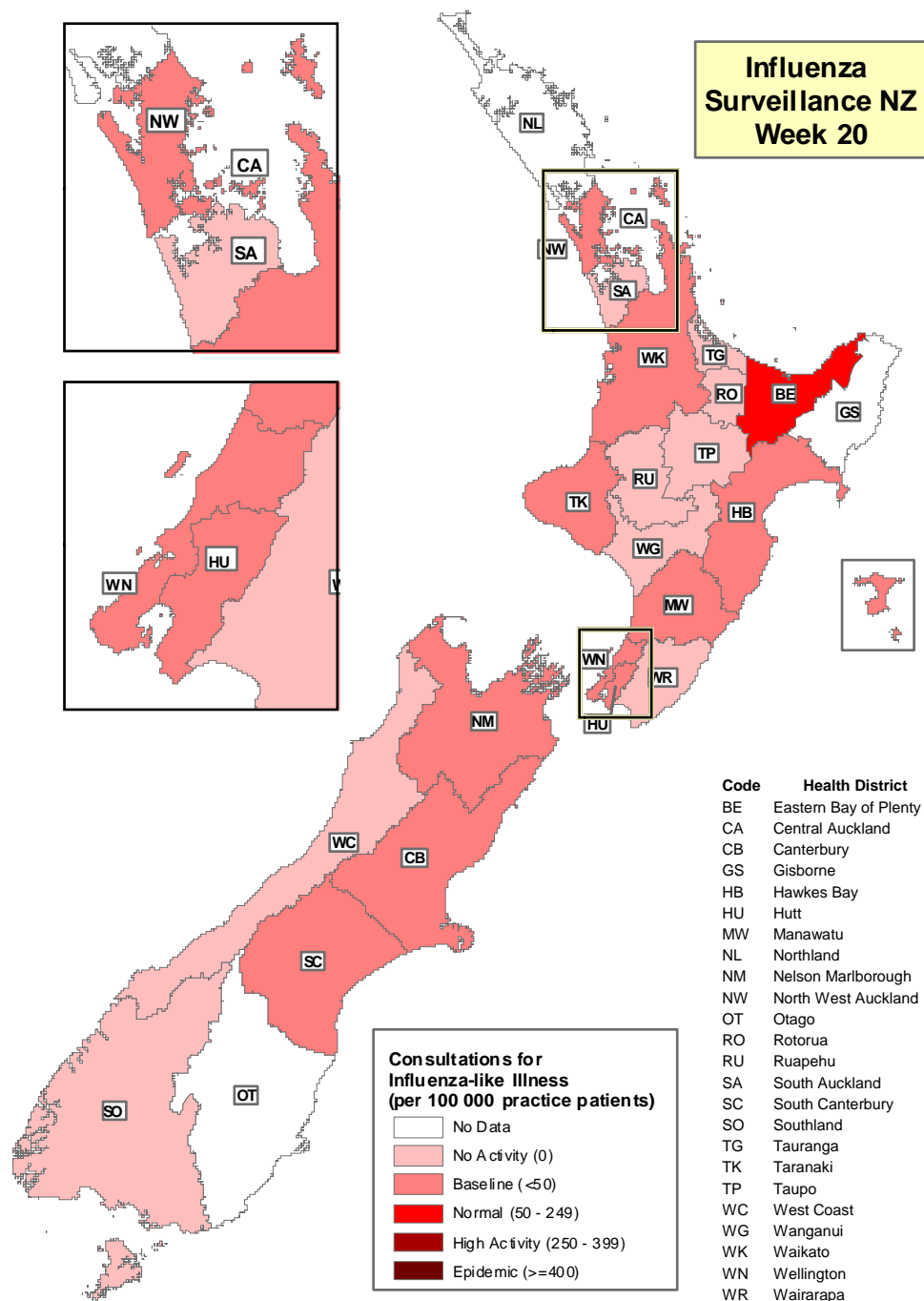


Figure 3 illustrates consultation rates for influenza-like illness mapped by health district for week 20, 2007.

Figure 3



The threshold used to describe the influenza-like activity can be referred in New Zealand Public Health Report 2001, 8 (1): 9-12 "Influenza surveillance and immunisation in New Zealand, 1990-1999"

Compiled by: Liza Lopez
 Population and Environmental Health
 ESR Kenepuru Science Centre
 PO Box 50 348
 PORIRUA

phone: 04 914-0647
 fax: 04 914-0770
 email: liza.lopez@esr.cri.nz