

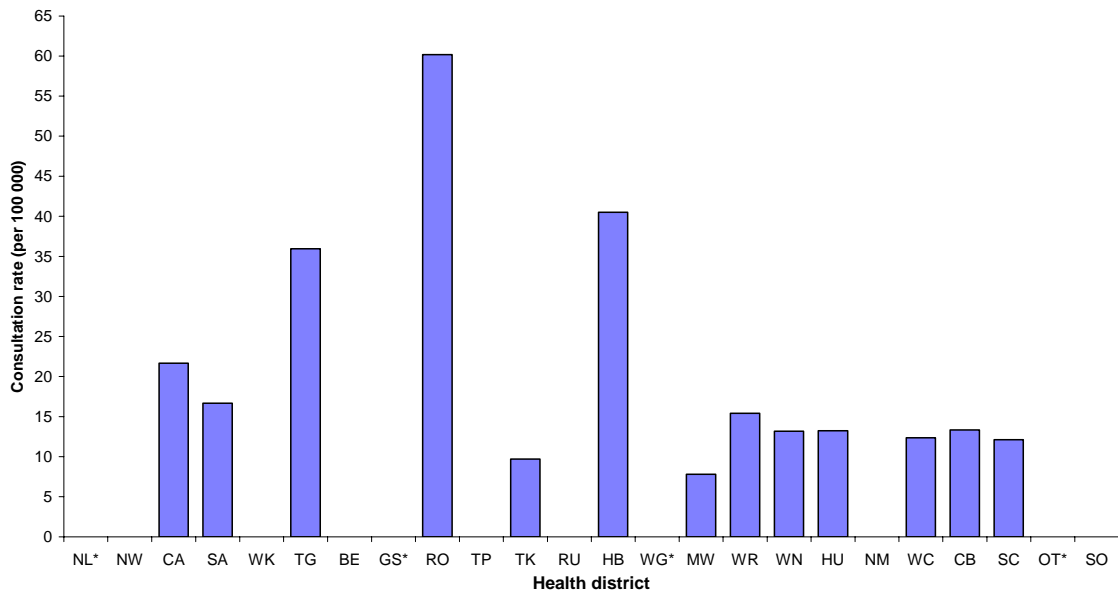
INFLUENZA WEEKLY UPDATE

2007/21: 21 - 25 May 2007

In the past week, a total of 44 consultations for influenza-like illness were reported from 77 general practices in 20 out of 24 health districts. This gives a weekly consultation rate of 13.3 per 100 000 patient population.

Figure one compares the consultation rates for influenza-like illness for each health district over the past week. Rotorua had the highest consultation rate (60.2 per 100 000), followed by Hawke's Bay (40.5 per 100 000).

Figure 1. Weekly consultation rates for influenza-like illness by health district week ending 25 May 2007



*Health districts did not participate for the week

Table 1. Health District Codes and Description

Code	Description	Code	Description
NL	Northland	HB	Hawke's Bay
NW	North West Auckland	WG	Wanganui
CA	Central Auckland	MW	Manawatu
SA	South Auckland	WR	Wairarapa
WK	Waikato	WN	Wellington
TG	Tauranga	HU	Hutt
BE	Eastern Bay of Plenty	NM	Nelson-Marlborough
GS	Gisborne	WC	West Coast
RO	Rotorua	CB	Canterbury
TP	Taupo	SC	South Canterbury
TK	Taranaki	OT	Otago
RU	Ruapehu	SO	Southland

Nineteen swabs were sent from the sentinel surveillance in the past week. Twenty-nine swabs were received by virology laboratories. One influenza A (yet to be sub-typed) was isolated from Central Auckland.

Two influenza A (one yet to be sub-typed) from Waikato (1) and Canterbury (1) were reported by regional virology laboratories from the laboratory-based (non-sentinel) surveillance.

Figure 2 shows the weekly national consultation rates for 2005 and 2006 seasons, and 2007 so far. The current rate of influenza is lower than at the same time last year.

Figure 2. Weekly consultation rates for influenza-like illness in New Zealand, 2005, 2006 and 2007

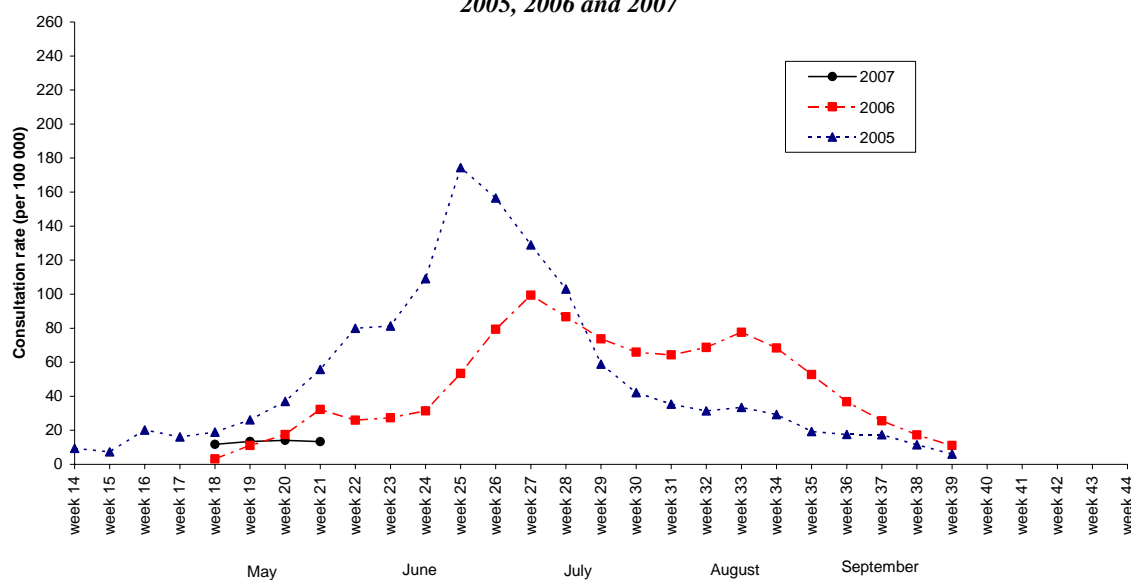
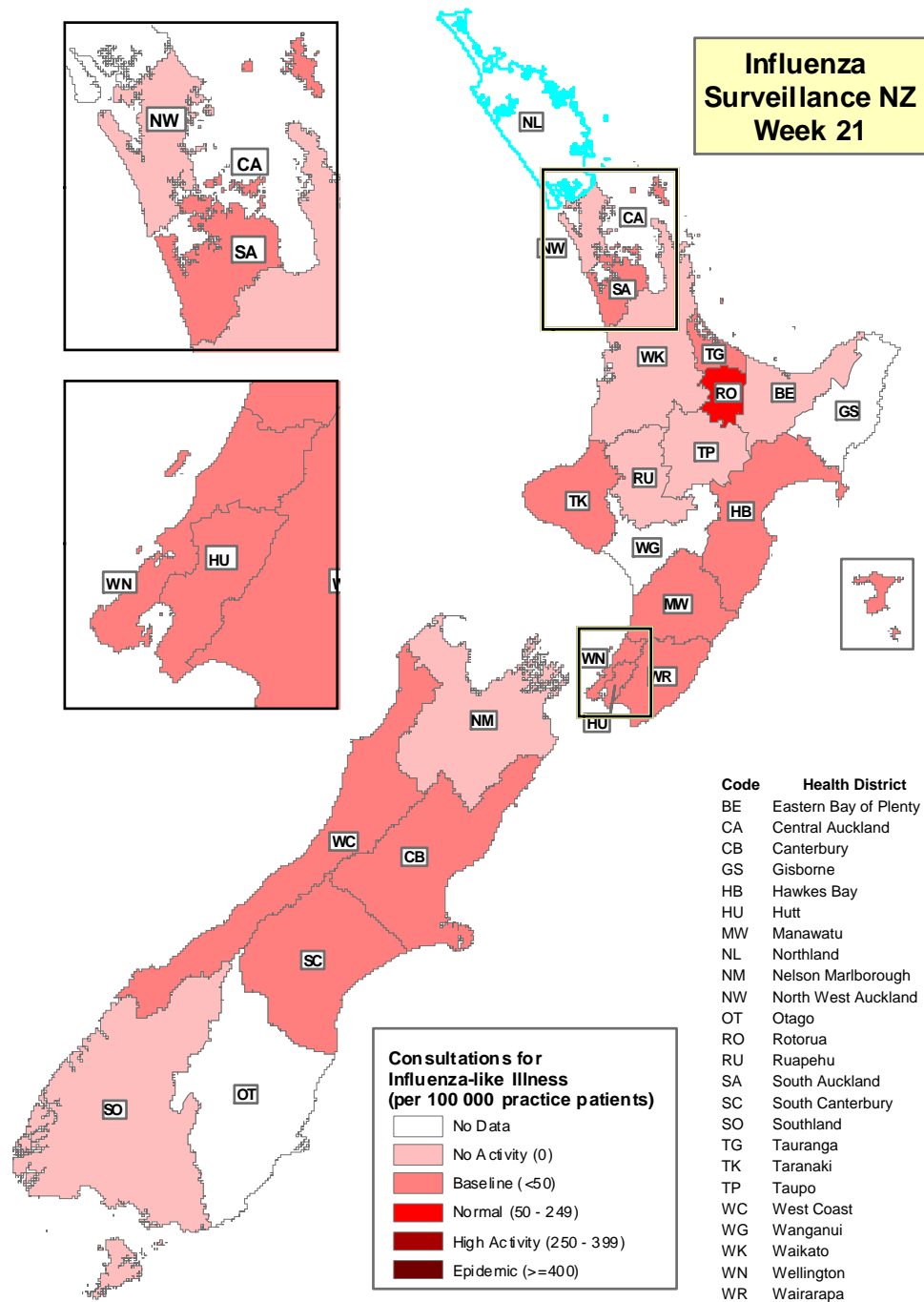


Figure 3 illustrates consultation rates for influenza-like illness mapped by health district for week 21, 2007.



The threshold used to describe the influenza-like activity can be referred in New Zealand Public Health Report 2001, 8 (1): 9-12 "Influenza surveillance and immunisation in New Zealand, 1990-1999"

Compiled by: Trev Margolin on behalf of Liza Lopez
 Population and Environmental Health
 ESR Kenepuru Science Centre
 PO Box 50 348
 PORIRUA

phone: 04 914-0647
 fax: 04 914-0770
 email: liza.lopez@esr.cri.nz