

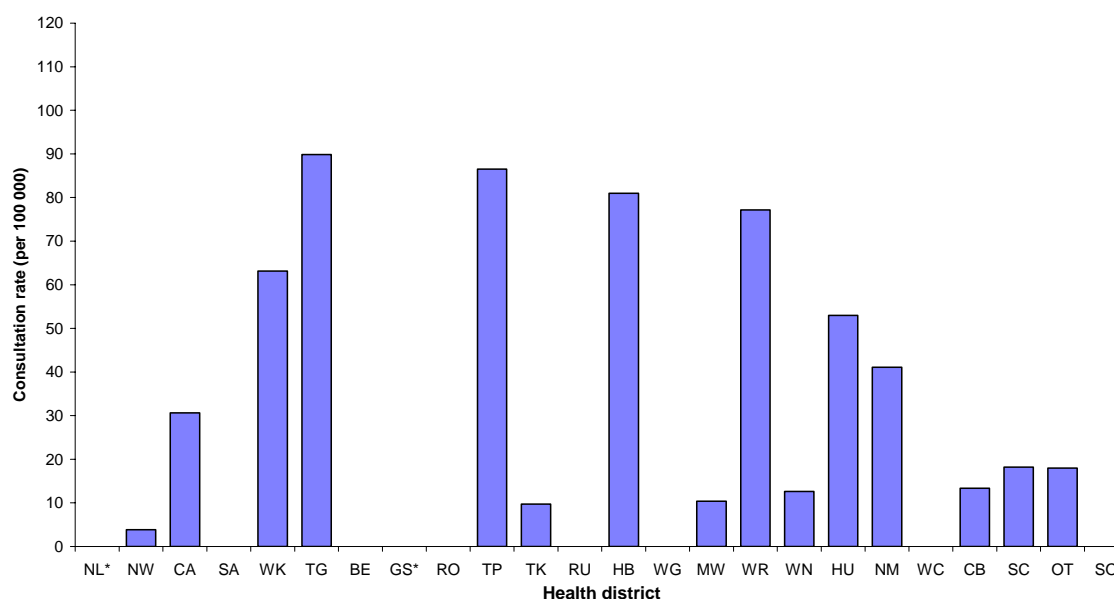
# INFLUENZA WEEKLY UPDATE

2007/25: 18 – 22 June 2007

In the past week, a total of 94 consultations for influenza-like illness were reported from 84 general practices in 22 out of 24 health districts. This gives a weekly consultation rate of 25.4 per 100 000 patient population.

Figure one compares the consultation rates for influenza-like illness for each health district over the past week. Tauranga had the highest consultation rate (89.9 per 100 000), followed by Taupo (86.5 per 100 000).

*Figure 1. Weekly consultation rates for influenza-like illness by health district week ending 22 June 2007*



\*Health districts not participating in the influenza surveillance

Thirty-two swabs were sent from the sentinel surveillance in the past week. Thirty-five swabs were received by virology laboratories. Two influenza A (yet to be sub-typed) were isolated from Canterbury.

Three influenza A (yet to be sub-typed) from Waikato were reported by regional virology laboratories from the laboratory-based (non-sentinel) surveillance.

Figure 2 shows the cumulative total of influenza isolates confirmed (sentinel and laboratory-based surveillance) to the end of week 25, 22 June 2007. A total of 25 influenza viruses were identified, 18 as influenza A (yet to be sub-typed), three as

A/New Caledonia/20/99 (H1N1) – like, two as B/Malaysia/2506/2004-like, one as B/Shanghai/361/2002-like, and one as influenza B (yet to be typed).

**Figure 2: Cumulative laboratory-confirmed isolates by health district to 22 June 2007**

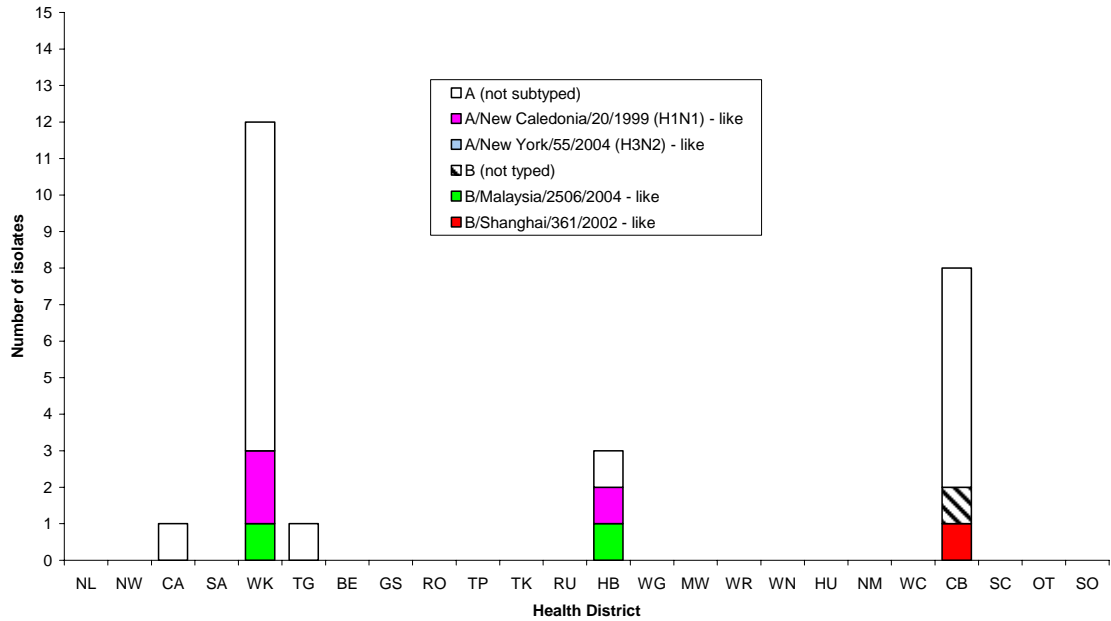


Figure 3 shows the weekly national consultation rates for 2005 and 2006 seasons, and 2007 so far. The current rate of influenza is lower than at the same time last year.

**Figure 3: Weekly consultation rates for influenza-like illness in New Zealand, 2005, 2006 and 2007**

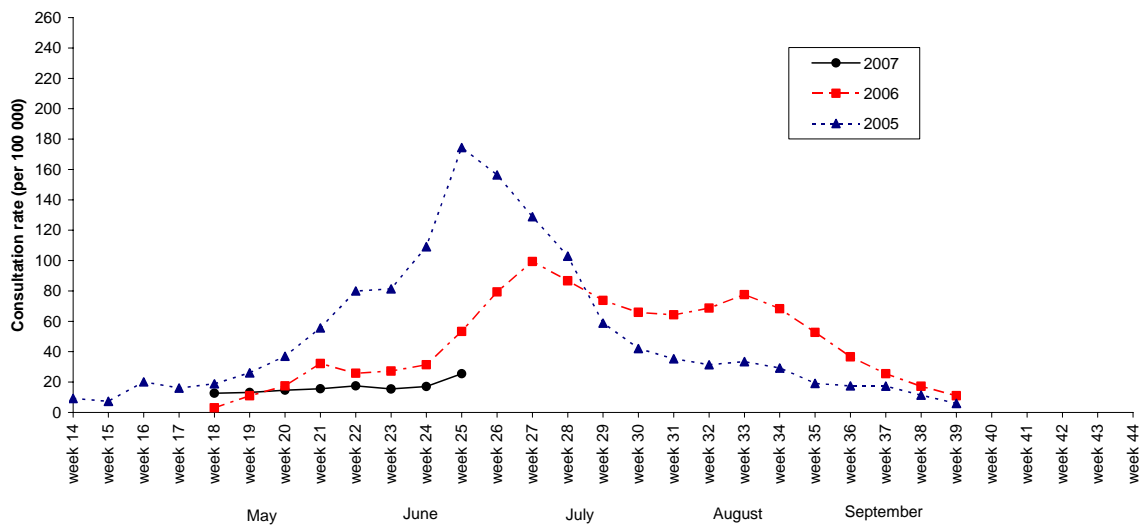
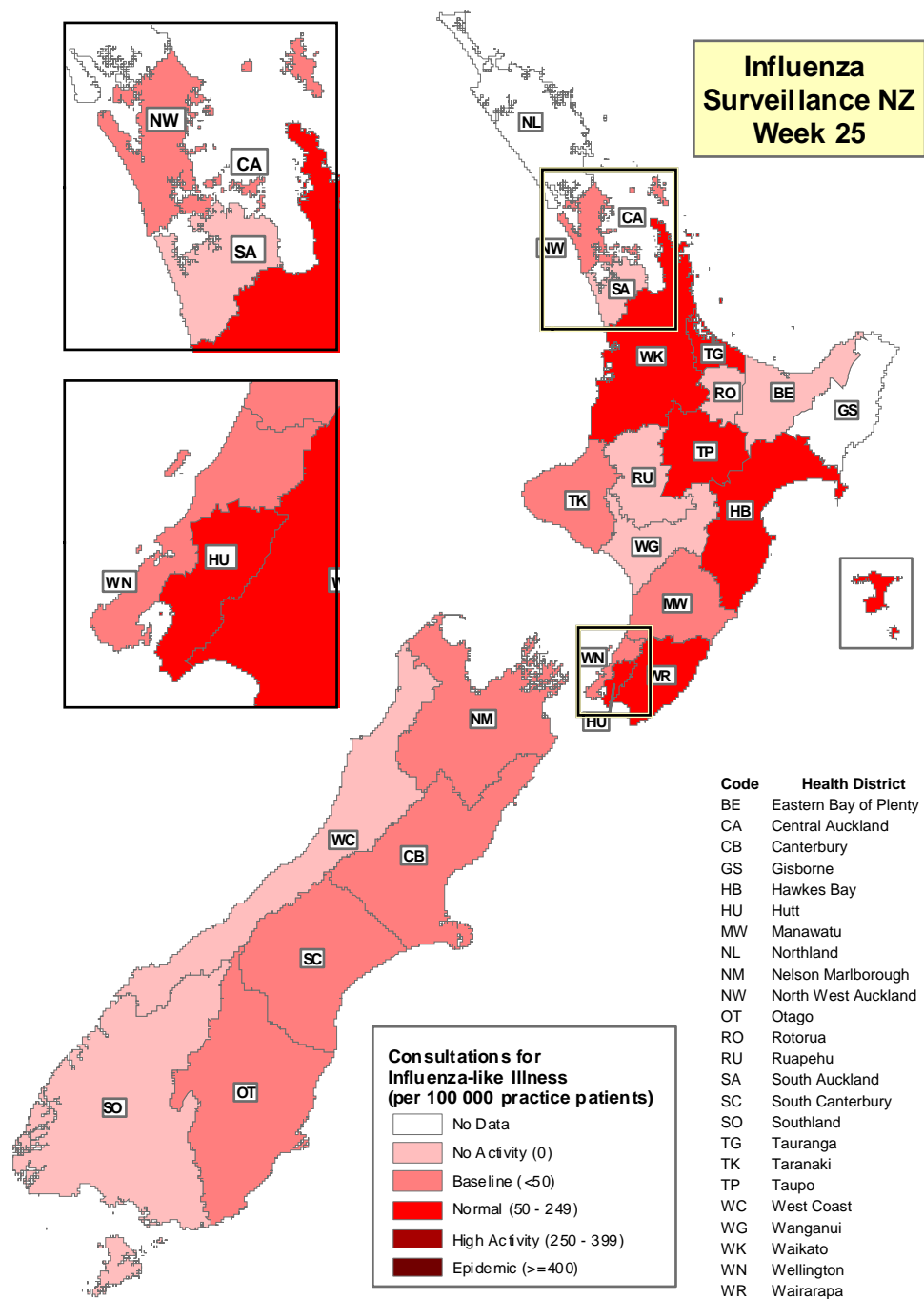


Figure 4 illustrates consultation rates for influenza-like illness mapped by health district for week 25, 2007.

**Figure 4**



The threshold used to describe the influenza-like activity can be referred in New Zealand Public Health Report 2001, 8 (1): 9-12 "Influenza surveillance and immunisation in New Zealand, 1990-1999"

---

Compiled by: Liza Lopez  
 Population and Environmental Health  
 ESR Kenepuru Science Centre  
 PO Box 50 348  
 PORIRUA

phone: 04 914-0647  
 fax: 04 914-0770  
 email: liza.lopez@esr.cri.nz