

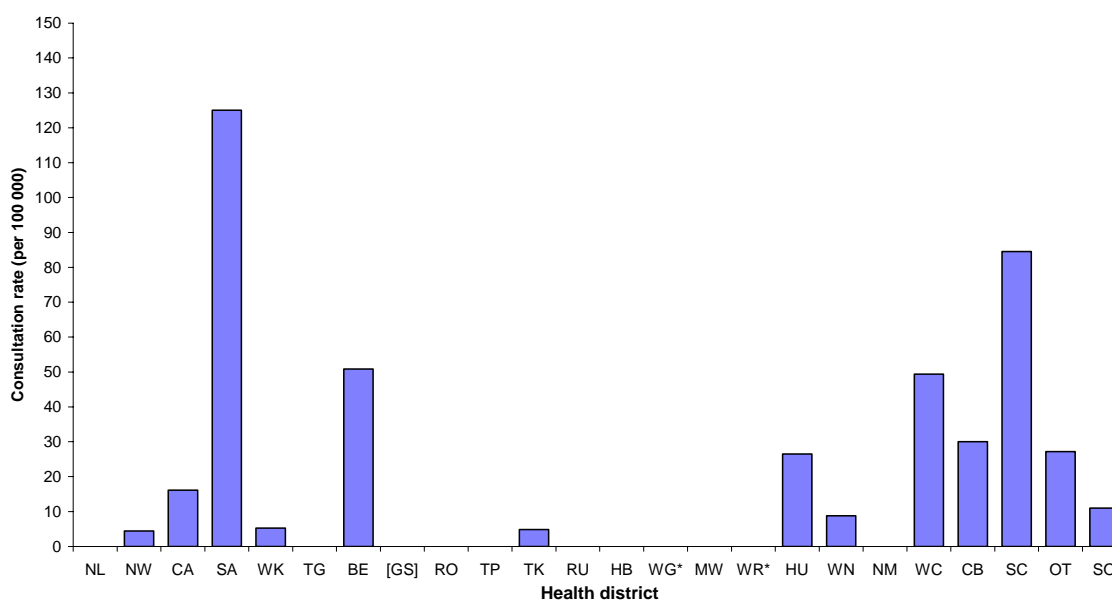
# INFLUENZA WEEKLY UPDATE

2007/39: 24-28 September 2007

In the past week, a total of 57 consultations for influenza-like illness were reported from 75 general practices in 21 out of 24 health districts. This gives a weekly consultation rate of 18.2 per 100 000 patient population.

Figure one compares the consultation rates for influenza-like illness for each health district over the past week. South Auckland had the highest consultation rate (125.0 per 100 000), followed by South Canterbury (84.5 per 100 000).

*Figure 1. Weekly consultation rates for influenza-like illness by health district week ending 28 September 2007*



[ ] Health district not participating in the influenza surveillance

\*Health districts not participating for the week

Sixteen swabs were sent from the sentinel surveillance in the past week. Fifteen swabs were received by virology laboratories. Of these, six influenza viruses were isolated, three as B/Shanghai/361/2002 – like, two as influenza B (yet to be antigenically typed), and one as influenza A (yet to be sub-typed). The distribution by health district is shown in Table 1.



Figure 3 shows the weekly national consultation rates for 2005 and 2006 seasons, and 2007 so far. The current rate of influenza is higher than at the same time last year.

*Figure 3: Weekly consultation rates for influenza-like illness in New Zealand, 2005, 2006 and 2007*

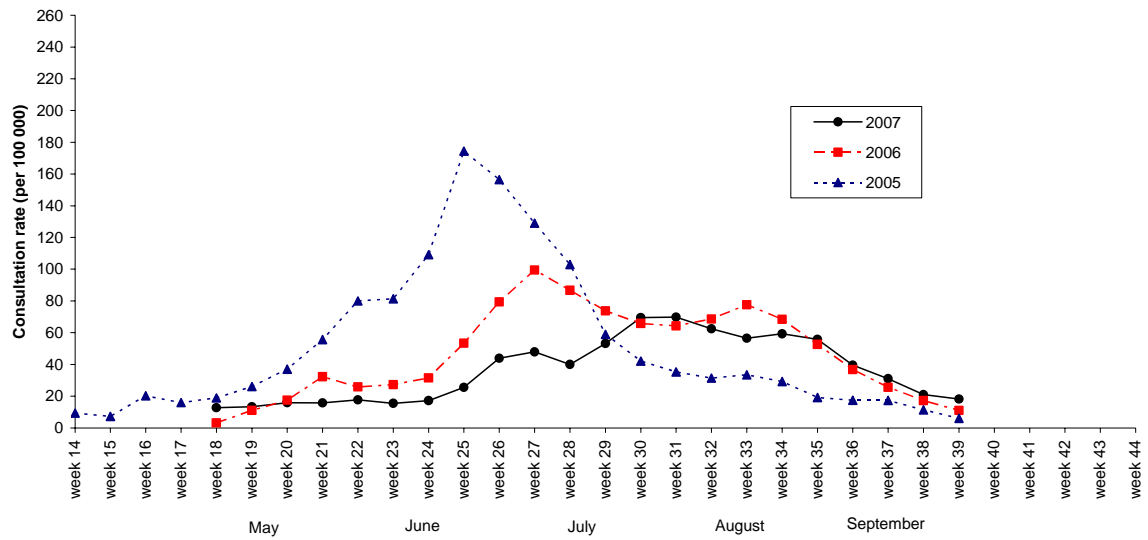
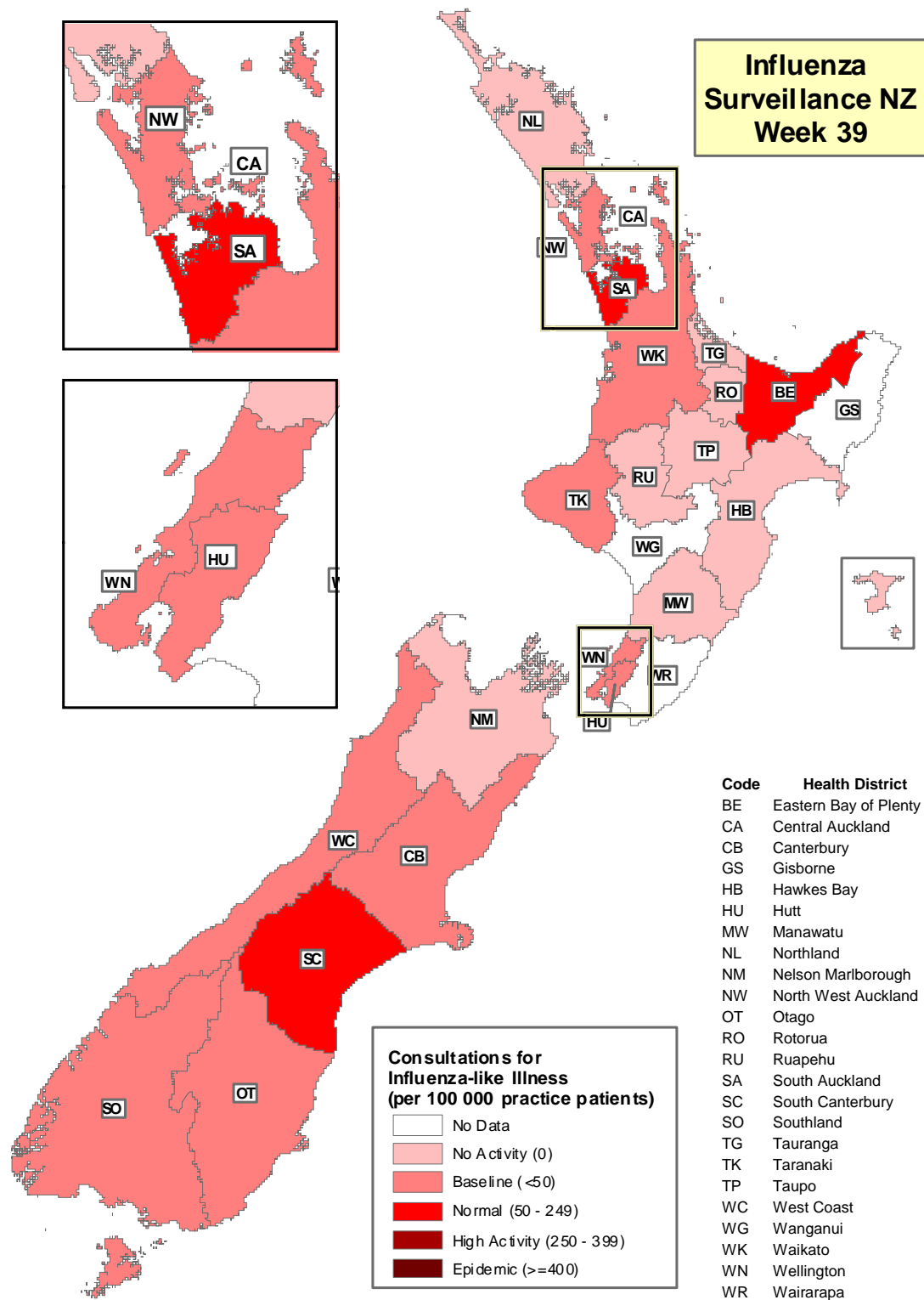


Figure 4 illustrates consultation rates for influenza-like illness mapped by health district for week 39, 2007.

Figure 4



The threshold used to describe the influenza-like activity can be referred in New Zealand Public Health Report 2001, 8 (1): 9-12 "Influenza surveillance and immunisation in New Zealand, 1990-1999"

Compiled by: Liza Lopez  
Population and Environmental Health  
ESR Kenepuru Science Centre  
PO Box 50 348  
PORIRUA

phone: 04 914-0647  
fax: 04 914-0770  
email: liza.lopez@esr.cri.nz