

INFLUENZA WEEKLY UPDATE

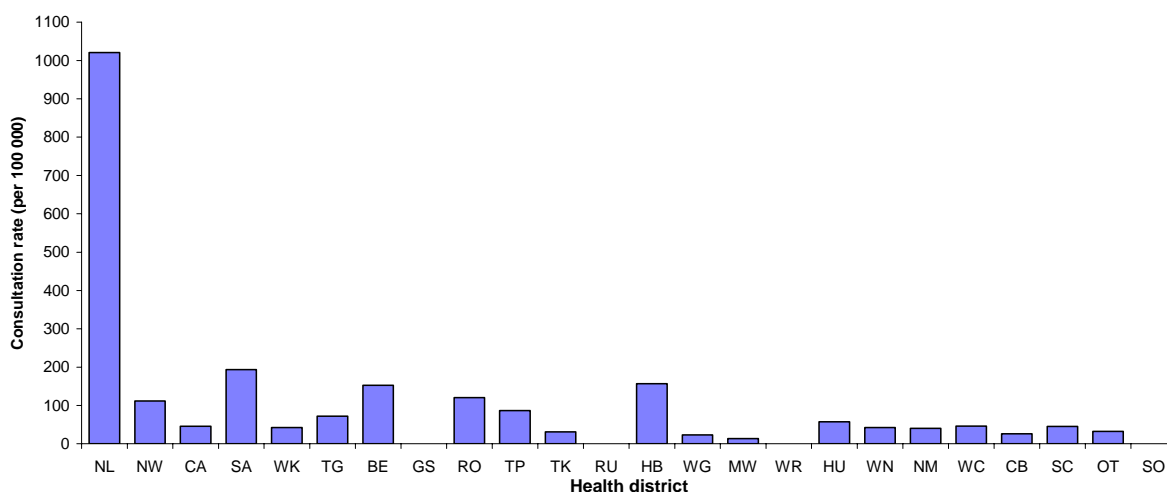
2008/26: 23 – 27 June 2008

In the past week, a total of 184 consultations for influenza-like illness were reported from 81 general practices in all of the 24 health districts. This gives a weekly consultation rate of 54.0 per 100 000 patient population.

Figure 1 compares the consultation rates for influenza-like illness for each health district over the past week. Northland had the highest consultation rate (1020.4 per 100 000), followed by South Auckland (193.6 per 100 000).

Figure 1

Figure 1: Weekly consultation rates for influenza-like illness by health district week ending 27 June 2008



Note: Some health districts have only one sentinel GP with a small patient denominator so the consultation rates could be high (e.g. Northland).

Fifty swabs were sent from the sentinel surveillance in the past week. Sixty swabs were received by virology laboratories. Of these, 25 influenza viruses were identified, 11 influenza A (yet to be sub-typed), eight A H3N2 (not antigenically sub-typed), three B (not antigenically typed), two B/Florida/4/2006 – like, and one A/Brisbane/10/2007 (H3N2) – like. The distribution by health district is shown in Table 1.

Table 1

Antigenic Strain	NW	CA	WK	TG	BE	GS	TK	RU	HB	WG	WR	WN	CB	Total
A (yet to be sub-typed)	0	5	2	0	0	0	0	0	0	0	1	2	1	11
A H3N2 (not antigenically sub-typed)	0	0	0	2	1	0	1	2	1	1	0	0	0	8
A/Brisbane/10/2007 (H3N2) - like	0	0	0	0	0	0	0	0	0	0	0	1	0	1
B (not antigenically typed)	1	0	1	0	0	0	0	0	0	0	0	0	1	3
B/Florida/4/2006 - like	0	0	0	0	0	1	0	0	0	0	0	0	1	2
Total	1	5	3	2	1	1	1	2	1	1	1	3	3	25

In addition, 17 influenza viruses were reported this week from the laboratory-based (non-sentinel) surveillance, 12 influenza A (yet to be sub-typed) and five B (not antigenically typed). The distribution by health district is shown in Table 2.

Table 2

Antigenic Strain	NW	CA	SA	WK	HB	CB	Total
A (yet to be sub-typed)	0	2	1	6	3	0	12
B (not antigenically typed)	1	1	0	1	1	1	5
Total	1	3	1	7	4	1	17

Figure 2 show the cumulative total of influenza viruses confirmed (sentinel and laboratory-based surveillance) to the end of week 26, 27 June 2008. A total of 137 influenza viruses were identified, 72 influenza A (yet to be sub-typed), 24 A/Brisbane/10/2007 (H3N2) – like, 12 A H3N2 (not antigenically sub-typed), one A H1N1 (not antigenically sub-typed), 17 influenza B (not antigenically typed), and 11 B/Florida/4/2006 – lineage.

Figure 2

Figure 2: Cumulative laboratory-confirmed isolates by health district to 27 June 2008

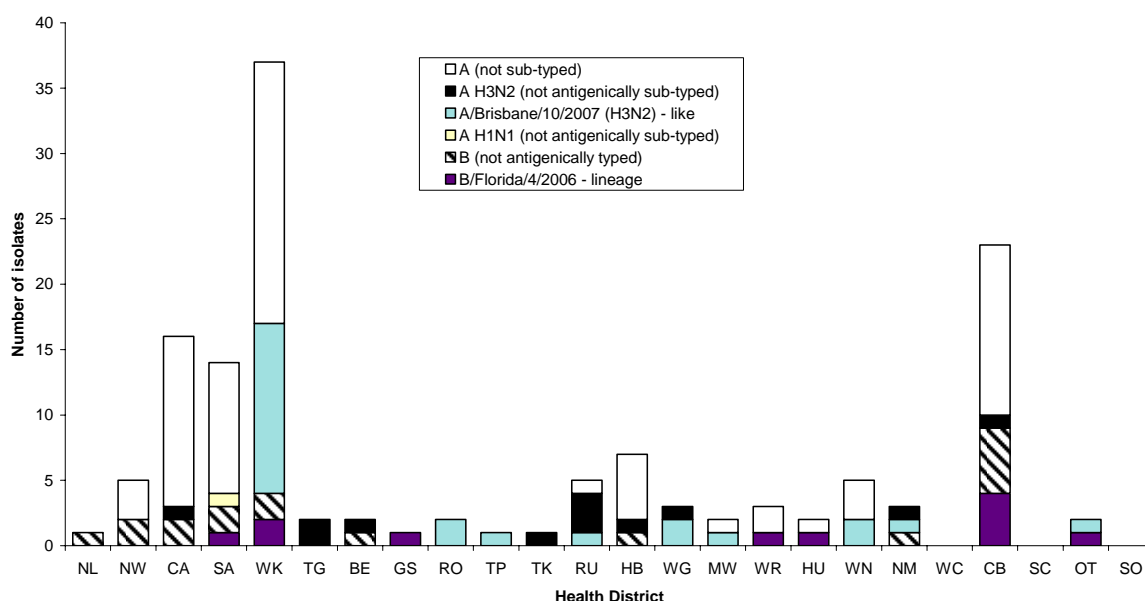


Figure 3 shows the weekly national consultation rates for 2006 and 2007 seasons, and 2008 so far. The current rate of influenza is higher than at the same time last year.

Figure 3

Figure 3: Weekly consultation rates for influenza-like illness in New Zealand, 2006, 2007 and 2008

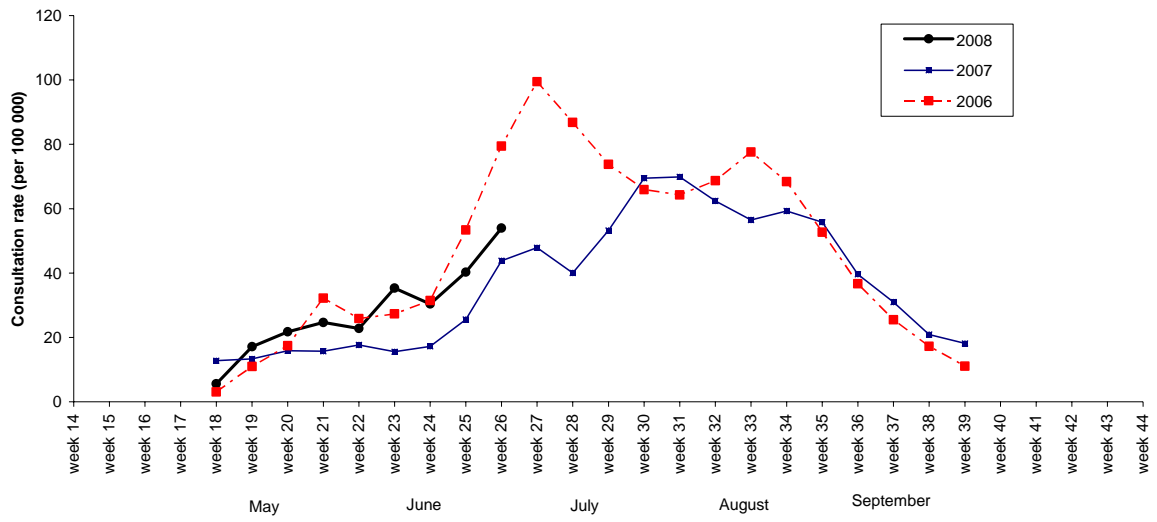
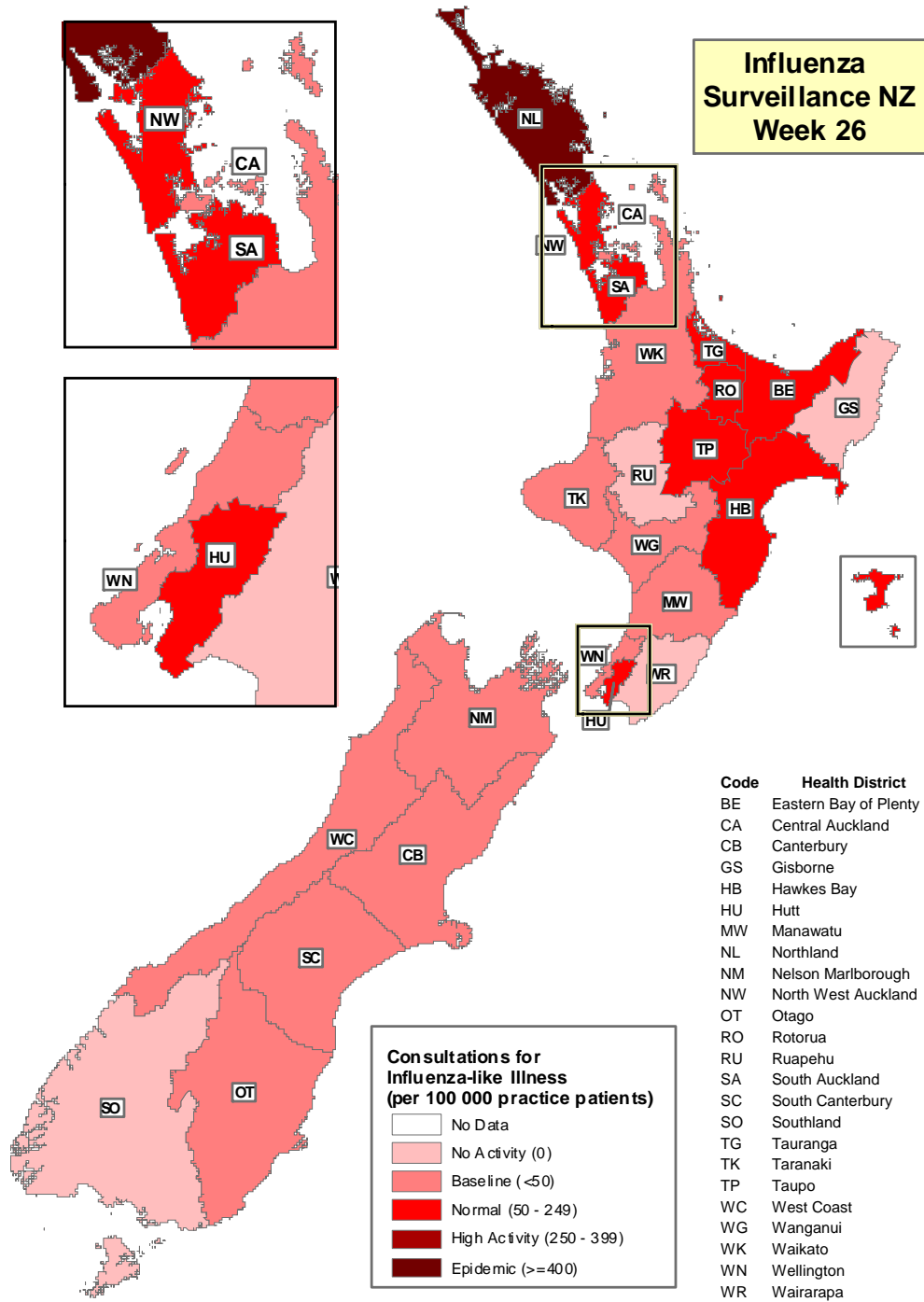


Figure 4 illustrates consultation rates for influenza-like illness mapped by health district for week 26, 2008.

Figure 4



Compiled by: Liza Lopez
 Population and Environmental Health
 ESR Kenepuru Science Centre
 PO Box 50 348
 PORIRUA

phone: 04 914-0647
 fax: 04 914-0770
 email: liza.lopez@esr.cri.nz