

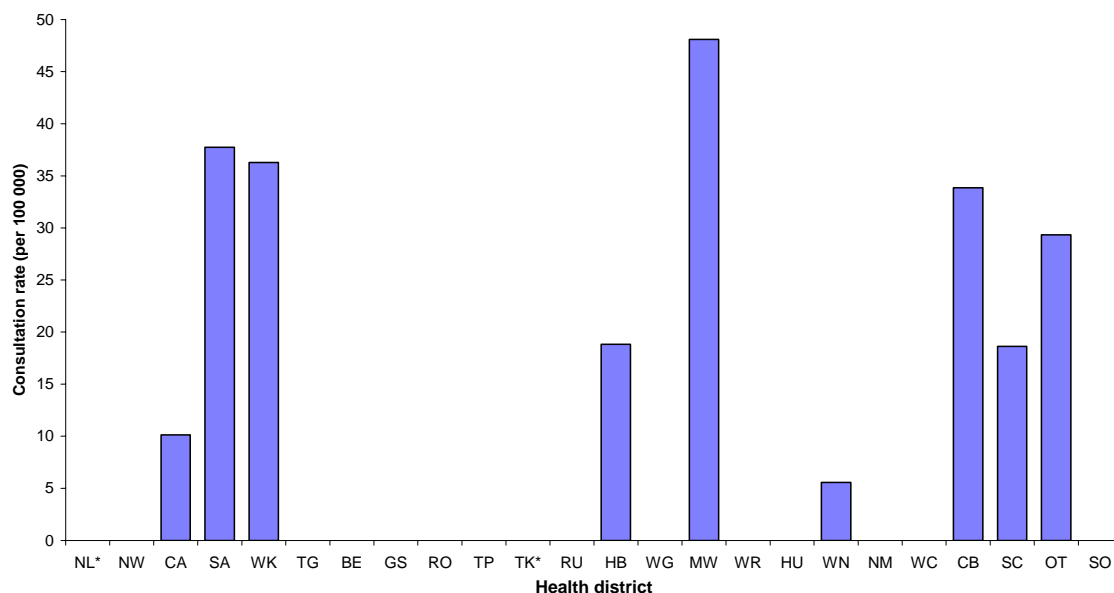
INFLUENZA WEEKLY UPDATE

2008/19: 5 – 9 May 2008

In the past week, a total of 44 consultations for influenza-like illness were reported from 61 general practices in 22 out of 24 health districts. This gives a weekly consultation rate of 17.0 per 100 000 patient population.

The graph compares the consultation rates for influenza-like illness for each health district over the past week. Manawatu had the highest consultation rate (48.1 per 100 000), followed by South Auckland (37.7 per 100 000).

Figure 1: Weekly consultation rates for influenza-like illness by health district week ending 9 May 2008



*Health districts did not participate for the week

Table 1. Health District Codes and Description

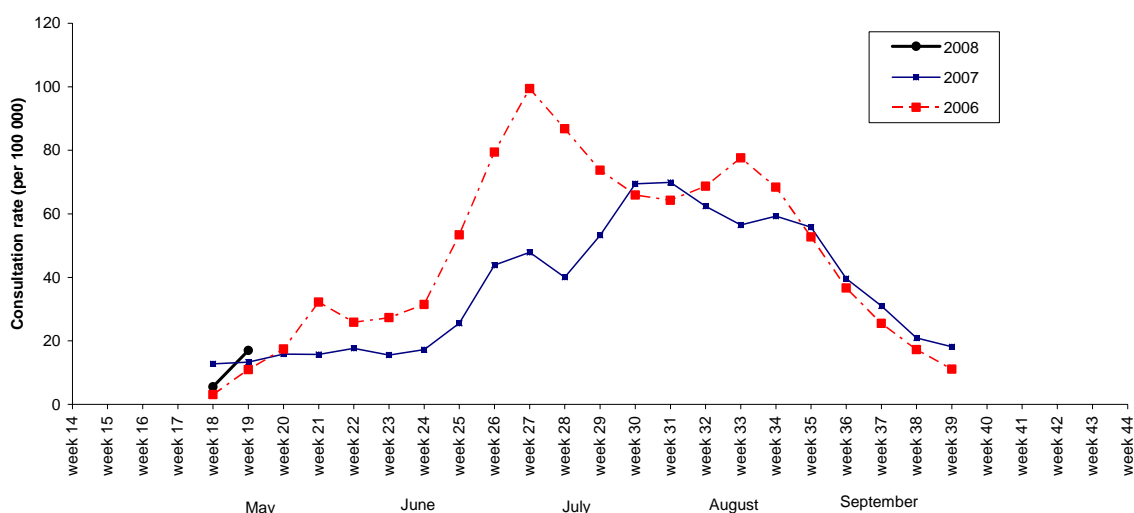
Code	Description	Code	Description
NL	Northland	HB	Hawke's Bay
NW	North West Auckland	WG	Wanganui
CA	Central Auckland	MW	Manawatu
SA	South Auckland	WR	Wairarapa
WK	Waikato	WN	Wellington
TG	Tauranga	HU	Hutt
BE	Eastern Bay of Plenty	NM	Nelson-Marlborough
GS	Gisborne	WC	West Coast
RO	Rotorua	CB	Canterbury
TP	Taupo	SC	South Canterbury
TK	Taranaki	OT	Otago
RU	Ruapehu	SO	Southland

Thirteen swabs were sent from the sentinel surveillance in the past week. Fourteen swabs were received by virology laboratories. One influenza B (yet to be typed) was isolated from Canterbury.

Two influenza A (yet to be sub-typed) from Waikato and Canterbury were reported by the laboratory-based (non-sentinel) surveillance.

Figure 2 shows the weekly national consultation rates for 2006 and 2007 seasons, and 2008 so far. The current rate of influenza is higher than at the same time last year.

Figure 2: Weekly consultation rates for influenza-like illness in New Zealand, 2006, 2007 and 2008



Compiled by:

Liza Lopez

Population and Environmental Health
 ESR Kenepuru Science Centre
 PO Box 50 348
 PORIRUA

phone: 04 914-0647

fax: 04 914-0770

email: liza.lopez@esr.cri.nz