

INFLUENZA WEEKLY UPDATE

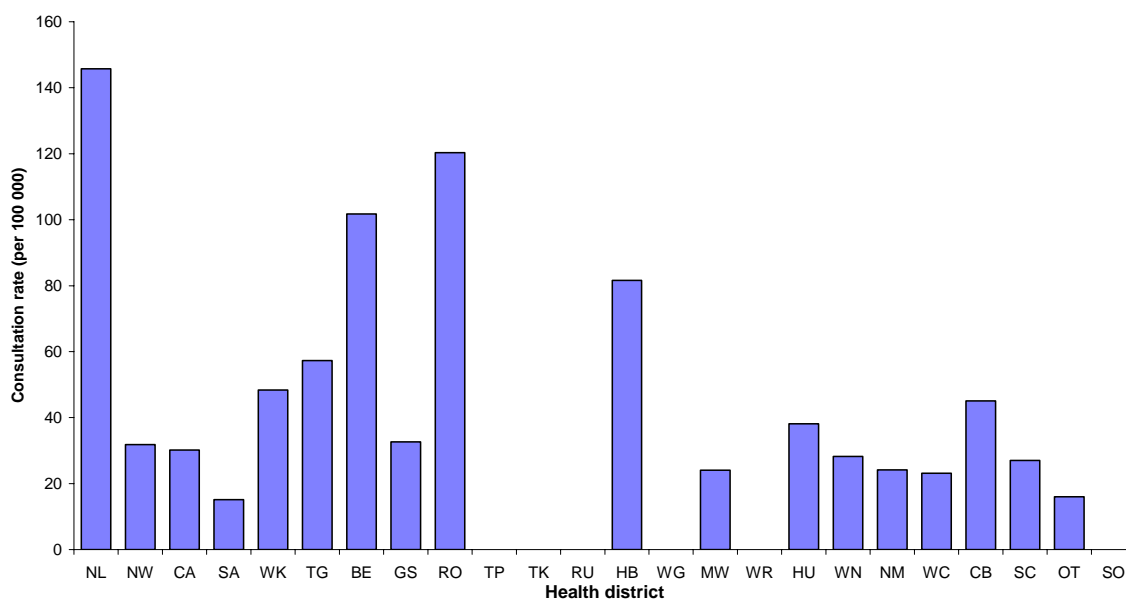
2008/24: 7 – 13 June 2008

In the past week, a total of 95 consultations for influenza-like illness were reported from 77 general practices in 24 health districts. This gives a weekly consultation rate of 30.1 per 100 000 patient population.

Figure 1 compares the consultation rates for influenza-like illness for each health district over the past week. Northland had the highest consultation rate (145.8 per 100 000), followed by Rotorua (120.3 per 100 000).

Figure 1

Figure 1: Weekly consultation rates for influenza-like illness by health district week ending 13 June 2008



Thirty-five swabs were sent from the sentinel surveillance in the past week. Forty-five swabs were received by virology laboratories. Of these, 11 influenza viruses were identified, eight influenza A (yet to be sub-typed) and three B (not typed). The distribution by health district is shown in Table 1.

Table 1

| Antigenic Strain | BE | TP | WR | WN | HU | CB | Total |
|-------------------------|----------|----------|----------|----------|----------|----------|-----------|
| A (yet to be sub-typed) | 0 | 1 | 0 | 1 | 1 | 5 | 8 |
| B (not typed) | 1 | 0 | 1 | 0 | 0 | 1 | 3 |
| Total | 1 | 1 | 1 | 1 | 1 | 6 | 11 |

In addition, three influenza A (yet to be sub-typed) were reported this week from the laboratory-based (non-sentinel) surveillance. The distribution by health district is shown in Table 2.

Table 2

| Antigenic Strain | SA | WK | HB | Total |
|-------------------------|----------|----------|----------|----------|
| A (yet to be sub-typed) | 1 | 1 | 1 | 3 |
| Total | 1 | 1 | 1 | 3 |

Figure 2 show the cumulative total of influenza viruses confirmed (sentinel and laboratory-based surveillance) to the end of week 24, 13 June 2008. A total of 61 influenza viruses were identified, 32 influenza A (yet to be sub-typed), 13 A/Brisbane/10/2007 (H3N2) – like, three A H3N2, one A (H1N1), 11 influenza B (yet to be typed), and one B/Florida/4/2006 - lineage.

Figure 2

Figure 2: Cumulative laboratory-confirmed isolates by health district to 13 June 2008

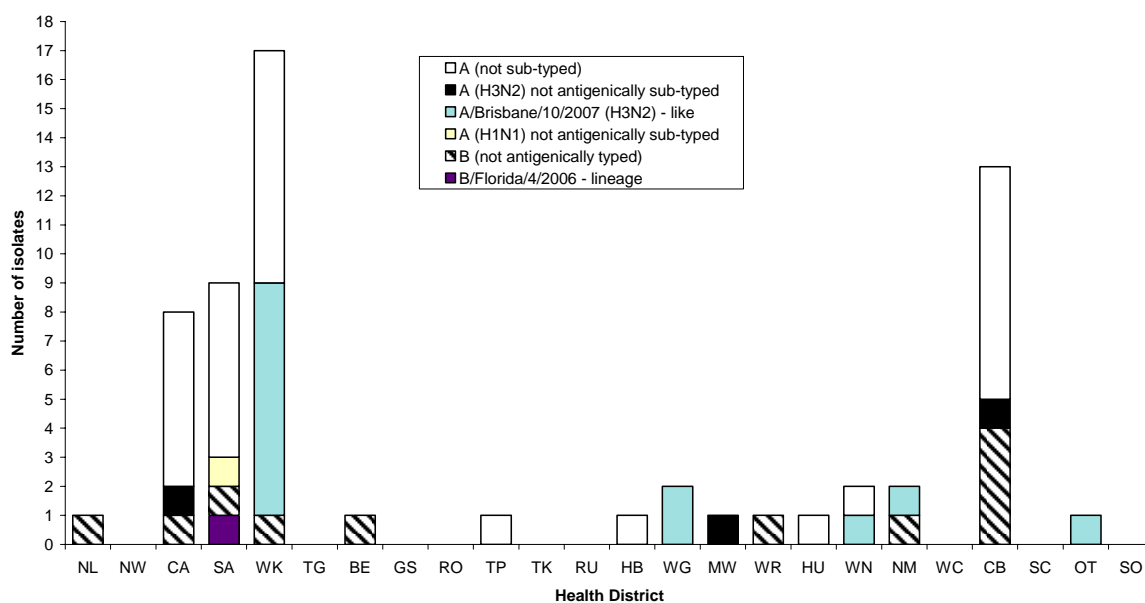


Figure 3 shows the weekly national consultation rates for 2006 and 2007 seasons, and 2008 so far. The current rate of influenza is higher than at the same time last year.

Figure 3

Figure 3: Weekly consultation rates for influenza-like illness in New Zealand, 2006, 2007 and 2008

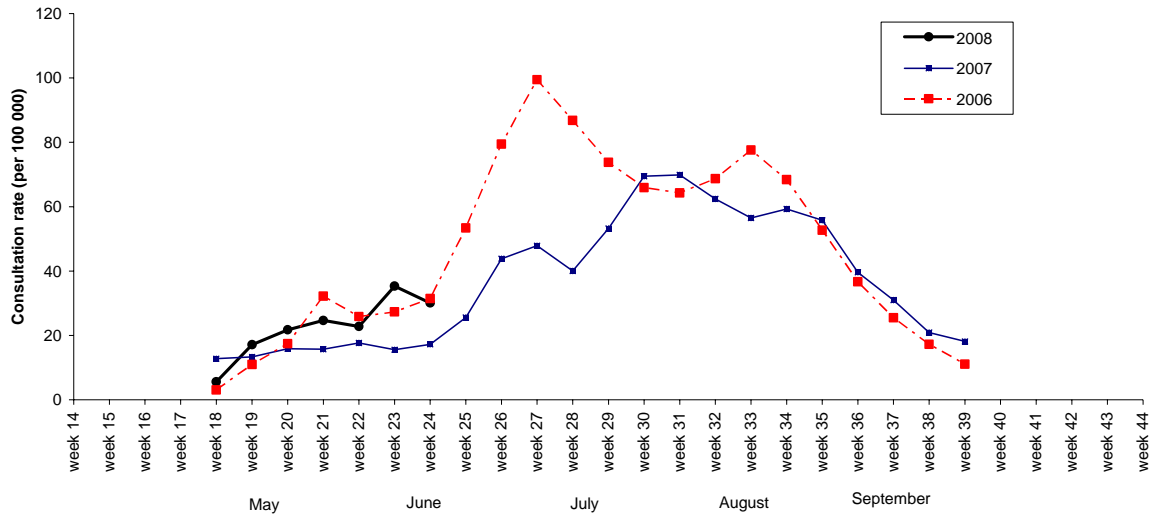
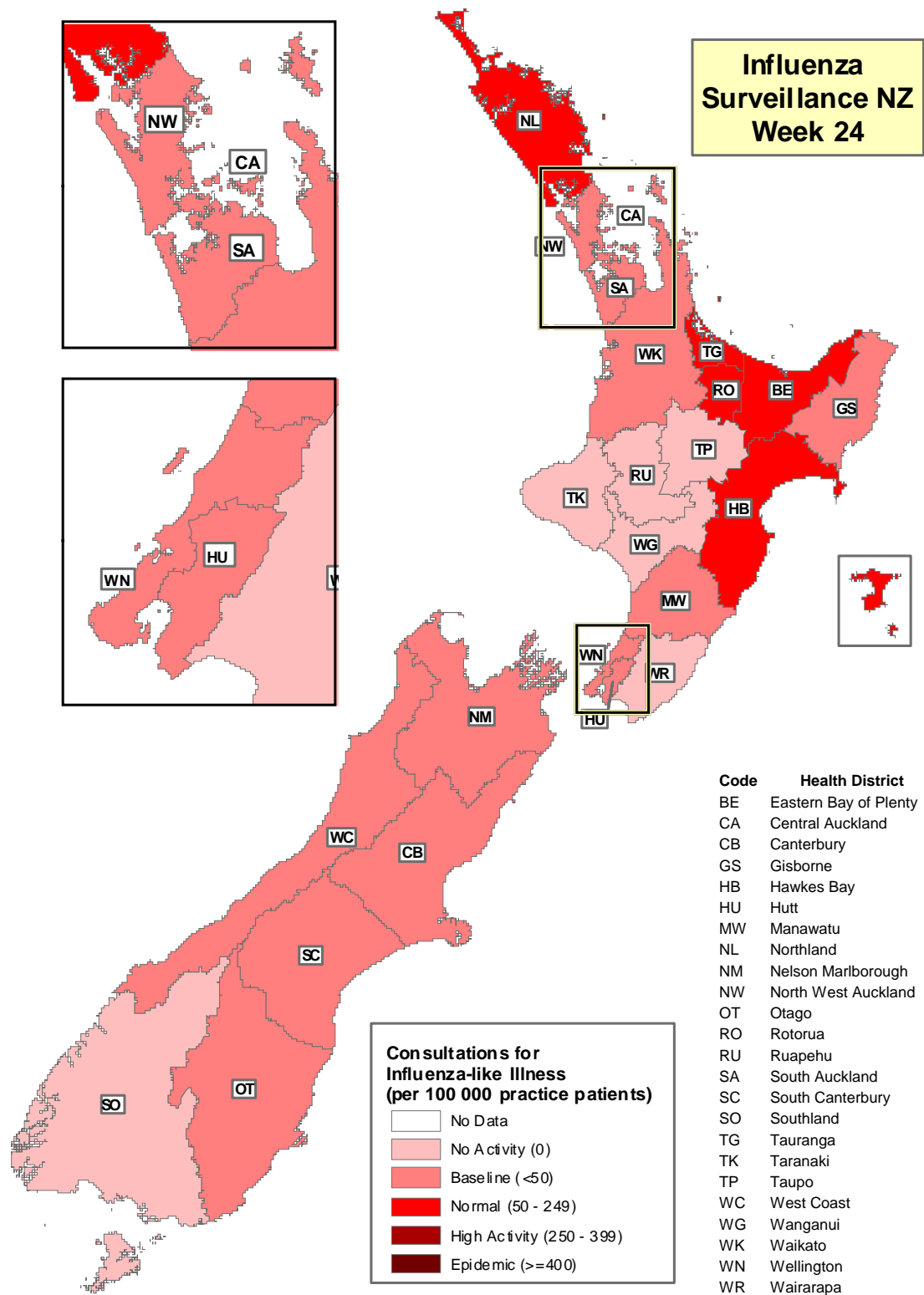


Figure 4 illustrates consultation rates for influenza-like illness mapped by health district for week 24, 2008.

Figure 4



Compiled by: Liza Lopez
 Population and Environmental Health
 ESR Kenepuru Science Centre
 PO Box 50 348
 PORIRUA

phone: 04 914-0647
 fax: 04 914-0770
 email: liza.lopez@esr.cri.nz