

# INFLUENZA WEEKLY UPDATE

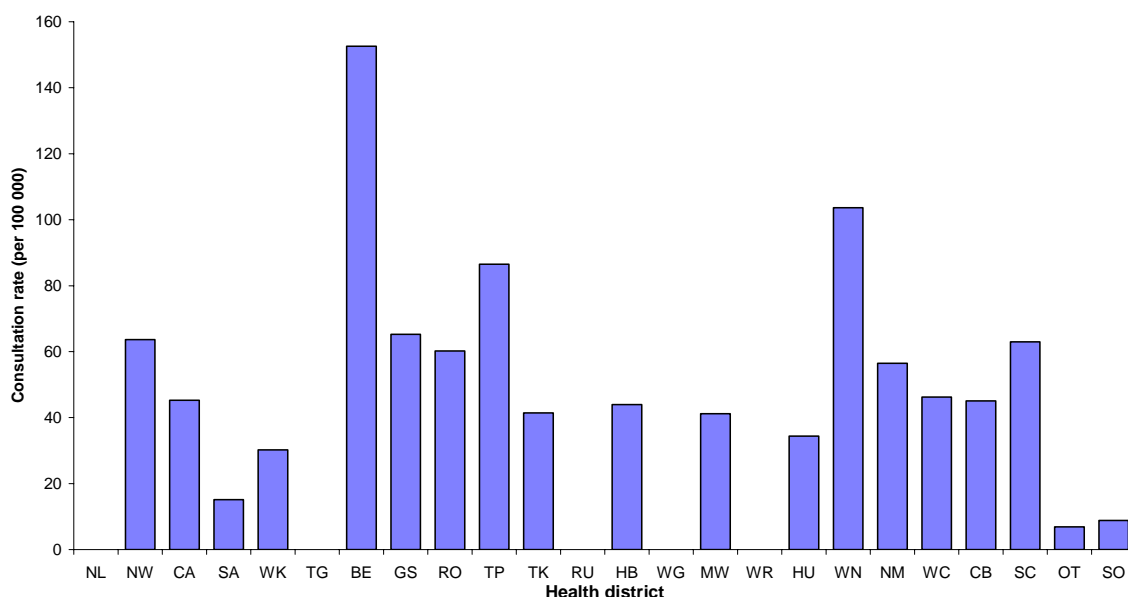
2008/25: 16 – 20 June 2008

In the past week, a total of 138 consultations for influenza-like illness were reported from 81 general practices in 23 of the 24 health districts. This gives a weekly consultation rate of 40.3 per 100 000 patient population.

Figure 1 compares the consultation rates for influenza-like illness for each health district over the past week. Eastern Bay of Plenty had the highest consultation rate (152.6 per 100 000), followed by Wellington (103.6 per 100 000).

**Figure 1**

*Figure 1: Weekly consultation rates for influenza-like illness by health district week ending 20 June 2008*



Fifty swabs were sent from the sentinel surveillance in the past week. Fifty-seven swabs were received by virology laboratories. Of these, 20 influenza viruses were identified, 12 influenza A (yet to be sub-typed), three B (not antigenically typed), two A H3N2 (not antigenically sub-typed), two A/Brisbane/10/2007 (H3N2) – like, and one B/Florida/4/2006 lineage. The distribution by health district is shown in Table 1.

**Table 1**

Antigenic Strain	WK	RO	RU	MW	WR	HU	NM	CB	OT	Total
A (yet to be sub-typed)	6	0	1	1	1	0	0	3	0	12
A H3N2 (not antigenically sub-typed)	0	0	1	0	0	0	1	0	0	2
A/Brisbane/10/2007 (H3N2) - like	0	1	1	0	0	0	0	0	0	2
B (not antigenically typed)	1	0	0	0	0	1	0	1	0	3
B/Florida/4/2006 lineage	0	0	0	0	0	0	0	0	1	1
<b>Total</b>	<b>7</b>	<b>1</b>	<b>3</b>	<b>1</b>	<b>1</b>	<b>1</b>	<b>1</b>	<b>4</b>	<b>1</b>	<b>20</b>

In addition, 14 influenza viruses were reported this week from the laboratory-based (non-sentinel) surveillance, 12 influenza A (yet to be sub-typed) and two B (not antigenically typed). The distribution by health district is shown in Table 2.

**Table 2**

Antigenic Strain	NW	SA	WK	HB	CB	Total
A (yet to be sub-typed)	3	3	4	1	1	12
B (not antigenically typed)	0	1	0	0	1	2
<b>Total</b>	<b>3</b>	<b>4</b>	<b>4</b>	<b>1</b>	<b>2</b>	<b>14</b>

Figure 2 show the cumulative total of influenza viruses confirmed (sentinel and laboratory-based surveillance) to the end of week 25, 20 June 2008. A total of 95 influenza viruses were identified, 52 influenza A (yet to be sub-typed), 20 A/Brisbane/10/2007 (H3N2) – like, four A H3N2 (not antigenically sub-typed), one A H1N1 (not antigenically sub-typed), 15 influenza B (not antigenically typed), and three B/Florida/4/2006 – lineage.

**Figure 2**

*Figure 2: Cumulative laboratory-confirmed isolates by health district to 20 June 2008*

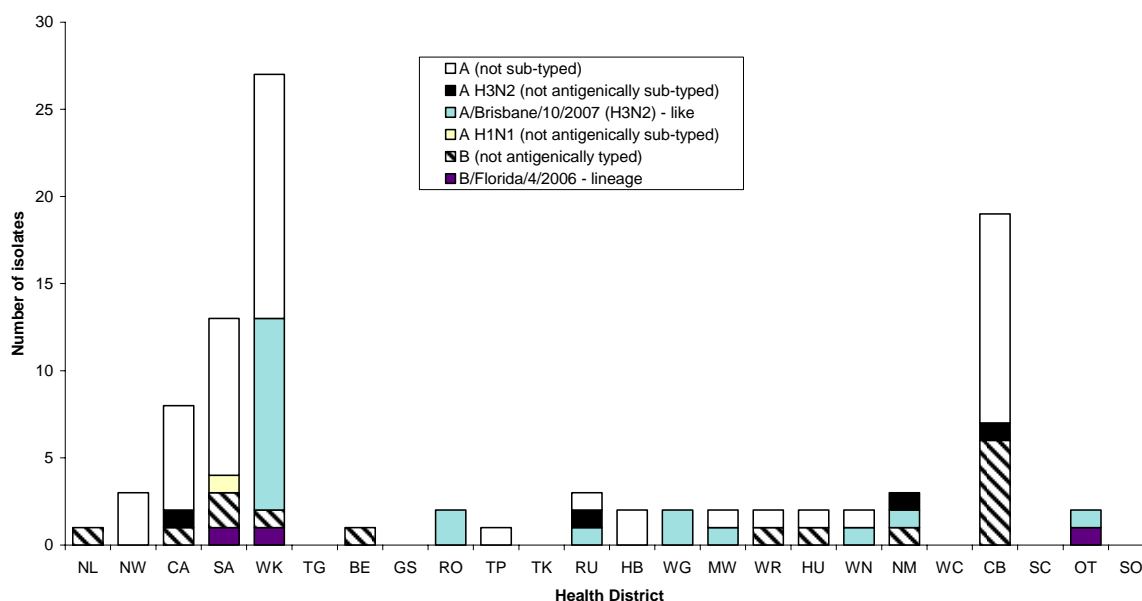


Figure 3 shows the weekly national consultation rates for 2006 and 2007 seasons, and 2008 so far. The current rate of influenza is higher than at the same time last year.

**Figure 3**

*Figure 3: Weekly consultation rates for influenza-like illness in New Zealand, 2006, 2007 and 2008*

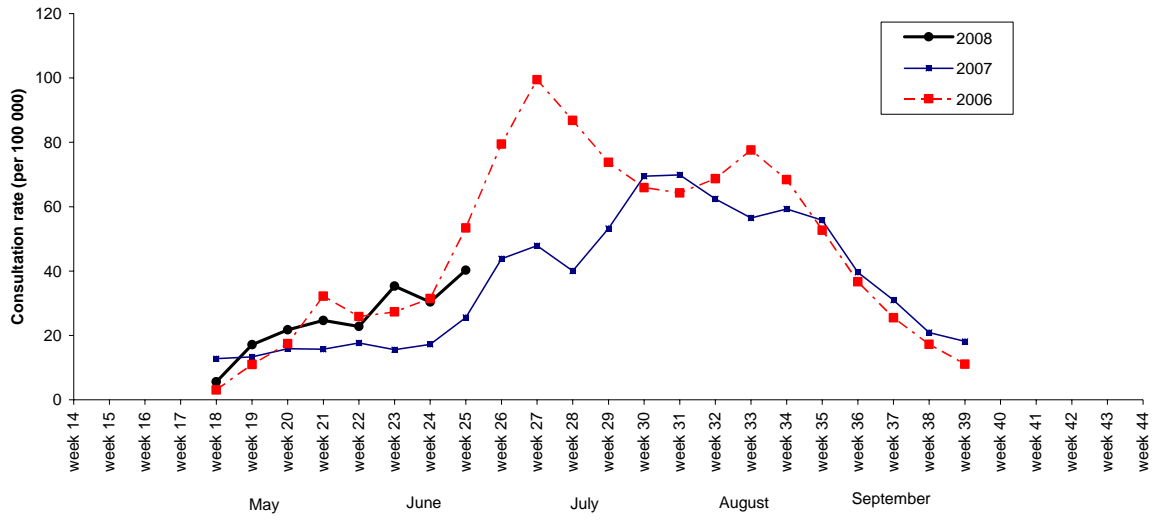
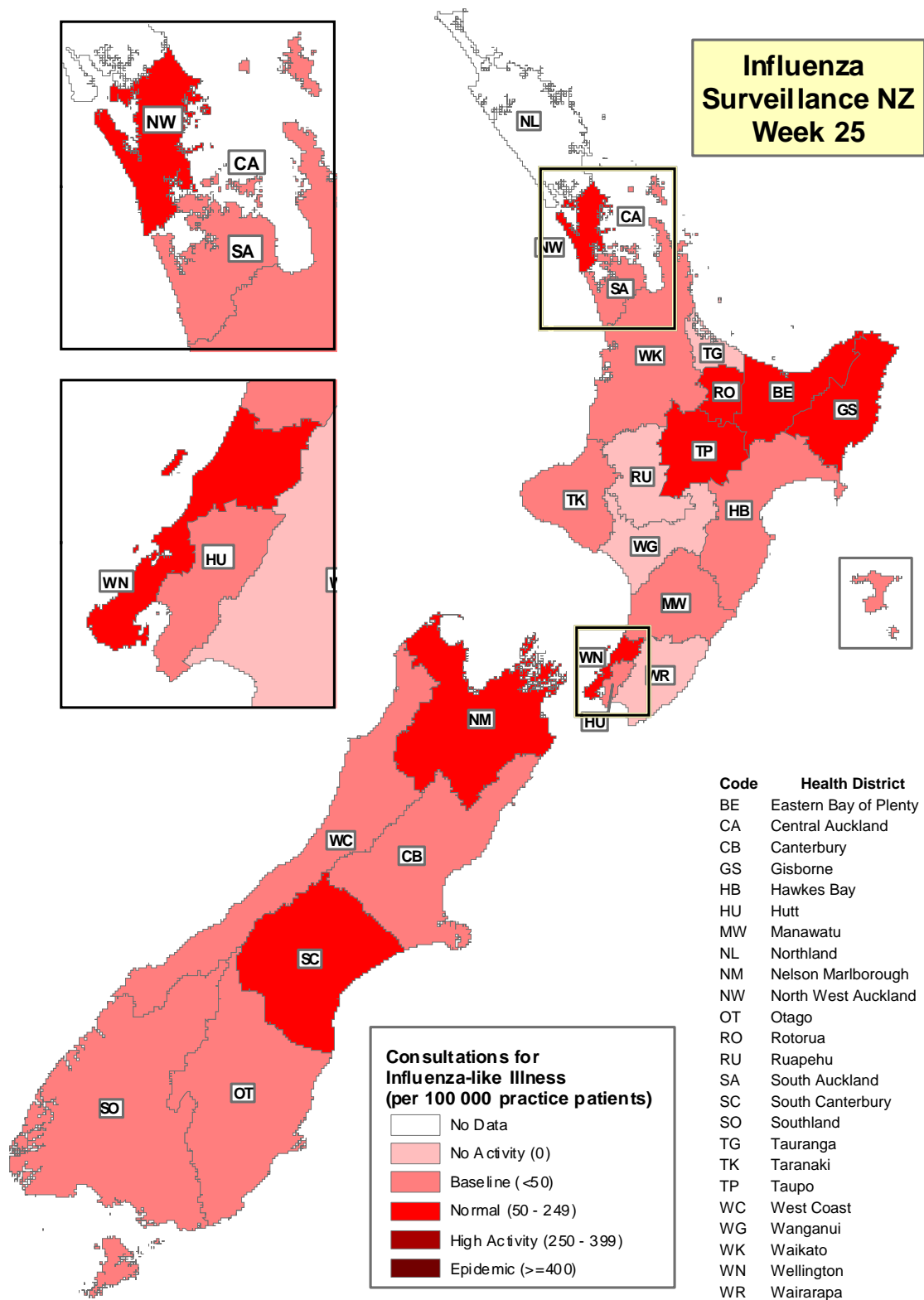


Figure 4 illustrates consultation rates for influenza-like illness mapped by health district for week 25, 2008.

Figure 4



Compiled by: Liza Lopez  
 Population and Environmental Health  
 ESR Kenepuru Science Centre  
 PO Box 50 348  
 PORIRUA

phone: 04 914-0647  
 fax: 04 914-0770  
 email: liza.lopez@esr.cri.nz