

# INFLUENZA WEEKLY UPDATE

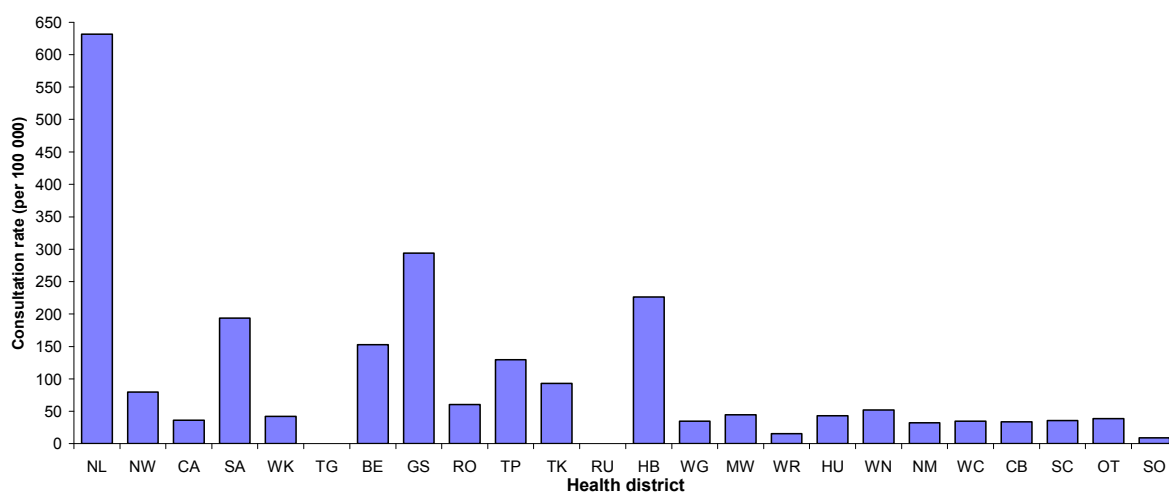
2008/27: 30 June – 4 July 2008

In the past week, a total of 203 consultations for influenza-like illness were reported from 81 general practices in all of the 24 health districts. This gives a weekly consultation rate of 57.5 per 100 000 patient population.

Figure 1 compares the consultation rates for influenza-like illness for each health district over the past week. Northland had the highest consultation rate (631.7 per 100 000), followed by Gisborne (293.7 per 100 000).

**Figure 1**

*Figure 1: Weekly consultation rates for influenza-like illness by health district week ending 4 July 2008*



Note: Some health districts have only one sentinel GP with a small patient denominator so the consultation rates could be high (e.g. Northland).

Fifty-two swabs were sent from the sentinel surveillance in the past week. Forty-three were received by virology laboratories. Of these, 21 influenza viruses were identified, 12 influenza A (yet to be sub-typed), five A H3N2 (not antigenically sub-typed), two B (not antigenically typed), one A/Brisbane/10/2007 (H3N2) – like, and one B/Florida/4/2006 – like. The distribution by health district is shown in Table 1.

**Table 1**

Antigenic Strain	NW	CA	SA	WK	BE	TK	WR	WN	CB	OT	Total
A (yet to be sub-typed)	1	8	1	1	0	0	0	0	1	0	12
A H3N2 (not antigenically sub-typed)	0	0	0	0	0	1	2	2	0	0	5
A/Brisbane/10/2007 (H3N2) - like	0	0	0	0	1	0	0	0	0	0	1
B (not antigenically typed)	0	1	0	1	0	0	0	0	0	0	2
B/Florida/4/2006 - like	0	0	0	0	0	0	0	0	0	1	1
<b>Total</b>	<b>1</b>	<b>9</b>	<b>1</b>	<b>2</b>	<b>1</b>	<b>1</b>	<b>2</b>	<b>2</b>	<b>1</b>	<b>1</b>	<b>21</b>

In addition, 24 influenza viruses were reported this week from the laboratory-based (non-sentinel) surveillance, 20 influenza A (yet to be sub-typed) and four B (not antigenically typed). The distribution by health district is shown in Table 2.

**Table 2**

Antigenic Strain	NW	CA	SA	WK	HB	CB	Total
A (yet to be sub-typed)	2	3	4	6	4	1	20
B (not antigenically typed)	0	1	2	1	0	0	4
<b>Total</b>	<b>2</b>	<b>4</b>	<b>6</b>	<b>7</b>	<b>4</b>	<b>1</b>	<b>24</b>

Figure 2 show the cumulative total of influenza viruses confirmed (sentinel and laboratory-based surveillance) to the end of week 27, 4 July 2008. A total of 182 influenza viruses were identified, 96 influenza A (yet to be sub-typed), 33 A/Brisbane/10/2007 (H3N2) – like, 17 A H3N2 (not antigenically sub-typed), one A H1N1 (not antigenically sub-typed), 20 influenza B (not antigenically typed), and 15 B/Florida/4/2006 – lineage.

**Figure 2**

*Figure 2: Cumulative laboratory-confirmed isolates by health district to 4 July 2008*

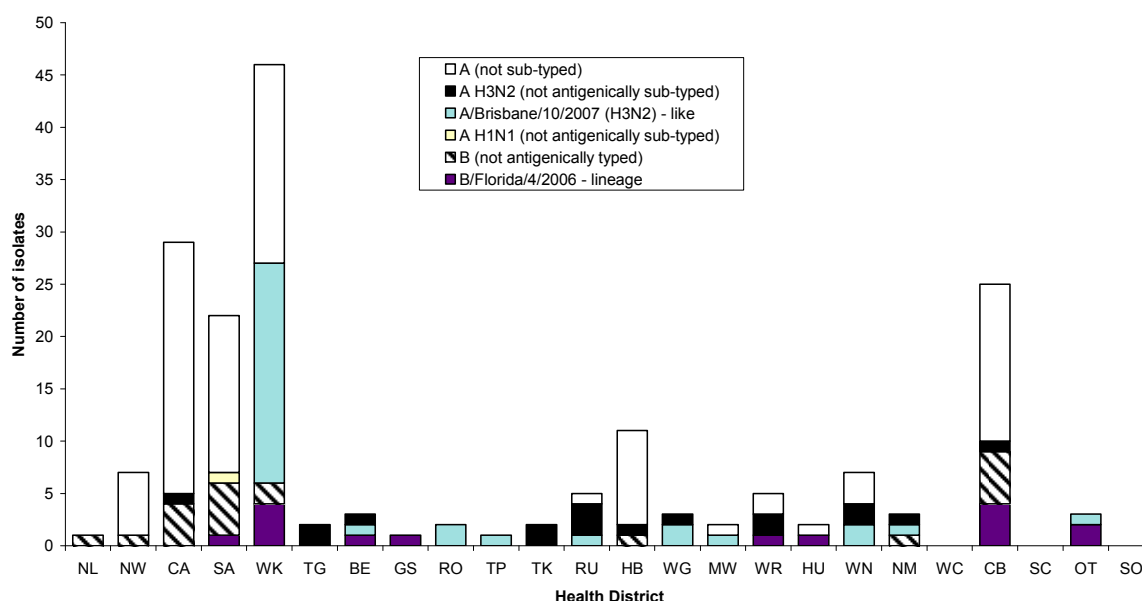


Figure 3 shows the weekly national consultation rates for 2006 and 2007 seasons, and 2008 so far. The current rate of influenza is higher than at the same time last year.

**Figure 3**

*Figure 3: Weekly consultation rates for influenza-like illness in New Zealand, 2006, 2007 and 2008*

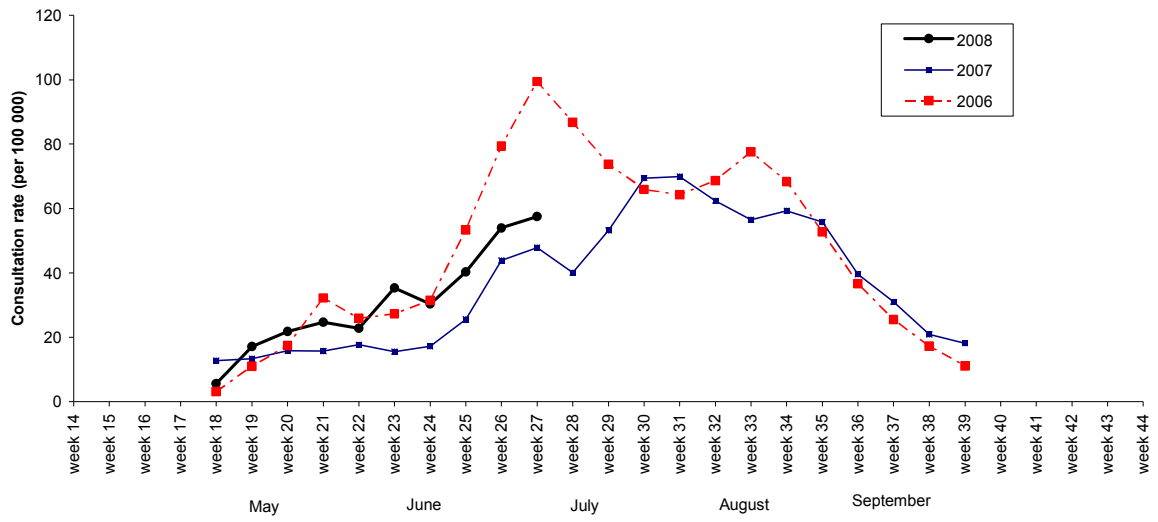
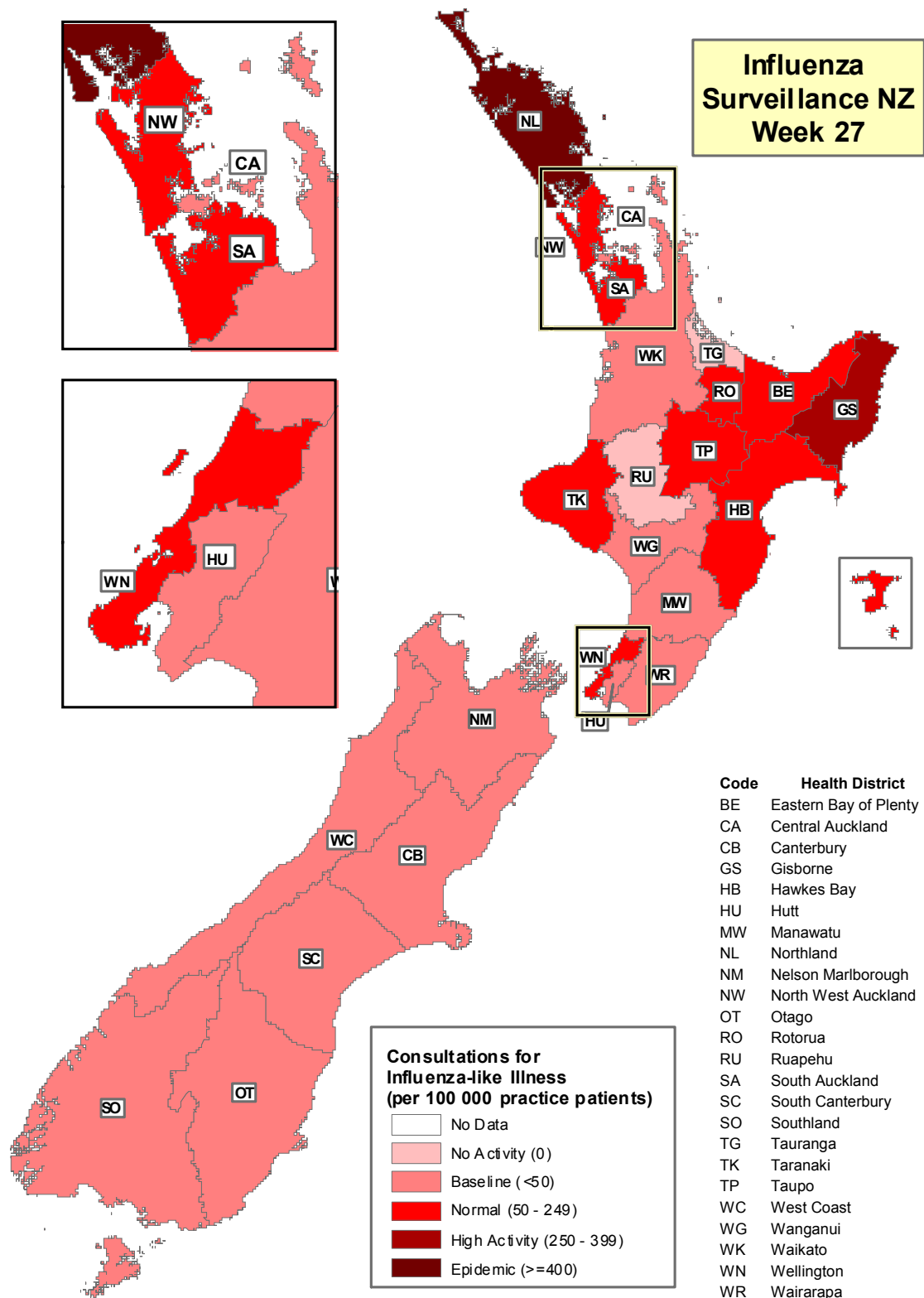


Figure 4 illustrates consultation rates for influenza-like illness mapped by health district for week 27, 2008.

Figure 4



Compiled by: Liza Lopez  
 Population and Environmental Health  
 ESR Kenepuru Science Centre  
 PO Box 50 348  
 PORIRUA

phone: 04 914-0647  
 fax: 04 914-0770  
 email: liza.lopez@esr.cri.nz