

# INFLUENZA WEEKLY UPDATE

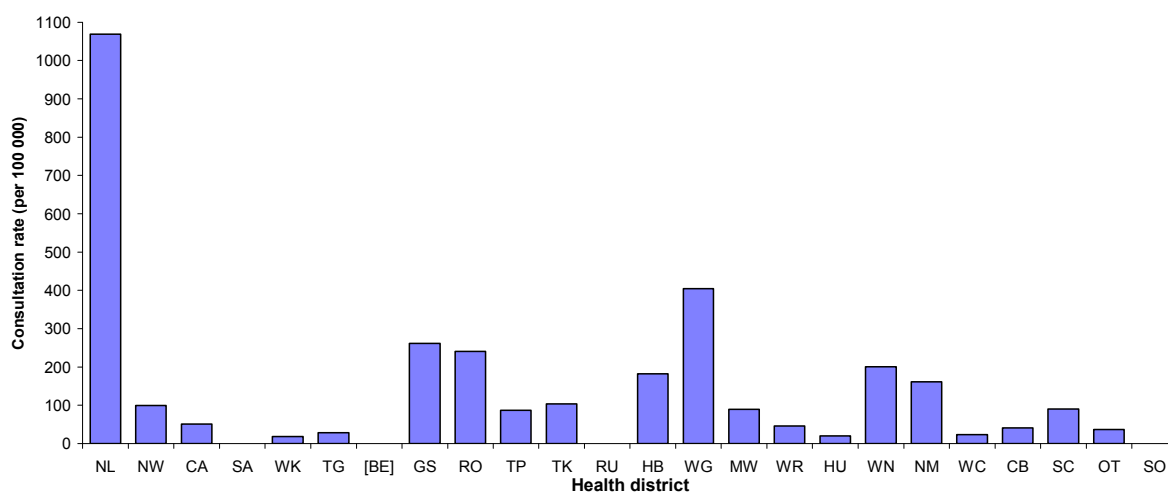
2008/28: 7 – 11 July 2008

In the past week, a total of 253 consultations for influenza-like illness were reported from 75 general practices in 23 of the 24 health districts. This gives a weekly consultation rate of 76.4 per 100 000 patient population.

Figure 1 compares the consultation rates for influenza-like illness for each health district over the past week. Northland had the highest consultation rate (1069.0 per 100 000), followed by Wanganui (404.6 per 100 000).

**Figure 1**

*Figure 1: Weekly consultation rates for influenza-like illness by health district week ending 11 July 2008*



[ ] Health district did not participate for the week.

Note: Some health districts have only one sentinel GP with a small patient denominator so the consultation rates could be high (e.g. Northland).

Fifty-four swabs were sent from the sentinel surveillance in the past week. Forty-five were received by virology laboratories. Of these, 25 influenza viruses were identified, 13 A H3N2 (not antigenically sub-typed), seven B (not antigenically typed), and five influenza A (yet to be sub-typed). The distribution by health district is shown in Table 1.

**Table 1**

Antigenic Strain	NW	CA	SA	WK	TG	BE	GS	TP	HB	WG	MW	WR	WN	NM	CB	OT	Total
A (yet to be sub-typed)	1	1	1	2	0	0	0	0	0	0	0	0	0	0	0	0	5
A H3N2 (not antigenically sub-typed)	0	0	0	0	1	1	3	2	1	2	1	1	1	0	0	0	13
B (not antigenically typed)	0	1	0	0	0	1	0	0	0	0	0	0	0	2	1	2	7
<b>Total</b>	<b>1</b>	<b>2</b>	<b>1</b>	<b>2</b>	<b>1</b>	<b>2</b>	<b>3</b>	<b>2</b>	<b>1</b>	<b>2</b>	<b>1</b>	<b>1</b>	<b>1</b>	<b>2</b>	<b>1</b>	<b>2</b>	<b>25</b>

In addition, 30 influenza viruses were reported this week from the laboratory-based (non-sentinel) surveillance, 20 influenza A (yet to be sub-typed) and 10 B (not antigenically typed). The distribution by health district is shown in Table 2.

**Table 2**

Antigenic Strain	NW	CA	SA	WK	HB	WN	NM	CB	SC	Total
A (yet to be sub-typed)	0	4	6	1	6	1	0	1	1	20
B (not antigenically typed)	1	3	4	0	1	0	1	0	0	10
<b>Total</b>	<b>1</b>	<b>7</b>	<b>10</b>	<b>1</b>	<b>7</b>	<b>1</b>	<b>1</b>	<b>1</b>	<b>1</b>	<b>30</b>

Figure 2 show the cumulative total of influenza viruses confirmed (sentinel and laboratory-based surveillance) to the end of week 28, 11 July 2008. A total of 237 influenza viruses were identified, 118 influenza A (yet to be sub-typed), 39 A/Brisbane/10/2007 (H3N2) – like, 27 A H3N2 (not antigenically sub-typed), one A H1N1 (not antigenically sub-typed), 37 influenza B (not antigenically typed), and 15 B/Florida/4/2006 – lineage.

**Figure 2**

*Figure 2: Cumulative laboratory-confirmed isolates by health district to 11 July 2008*

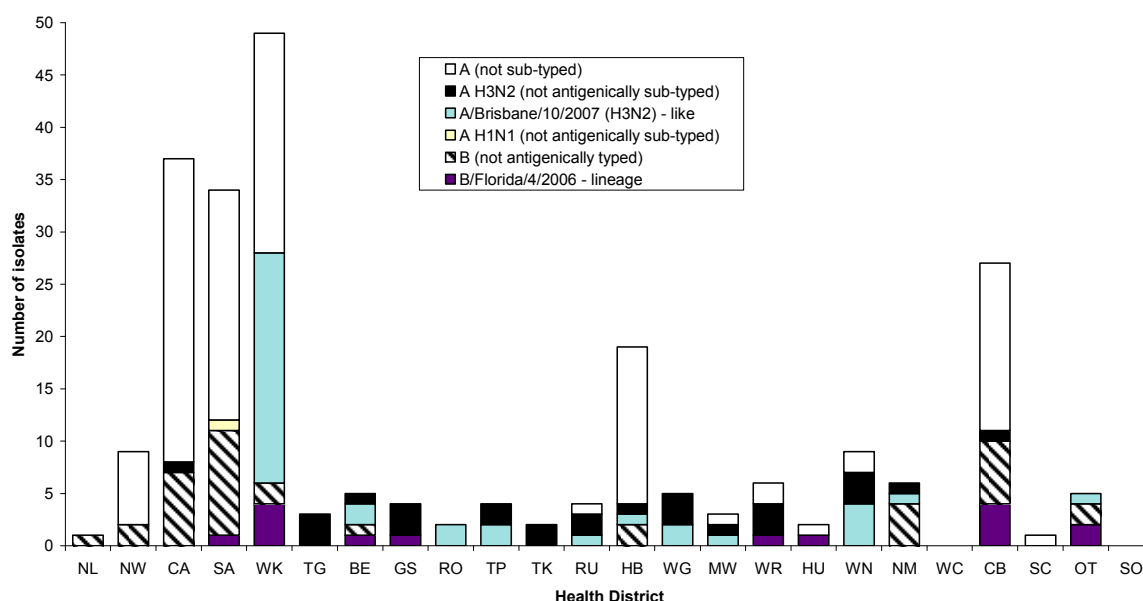


Figure 3 shows the weekly national consultation rates for 2006 and 2007 seasons, and 2008 so far. The current rate of influenza is higher than at the same time last year.

**Figure 3**

*Figure 3: Weekly consultation rates for influenza-like illness in New Zealand, 2006, 2007 and 2008*

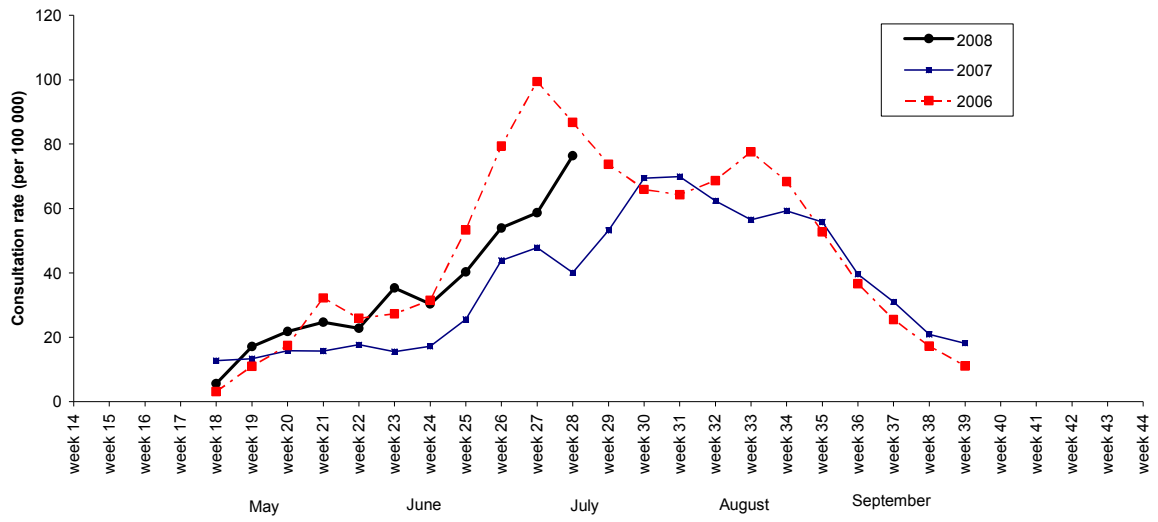
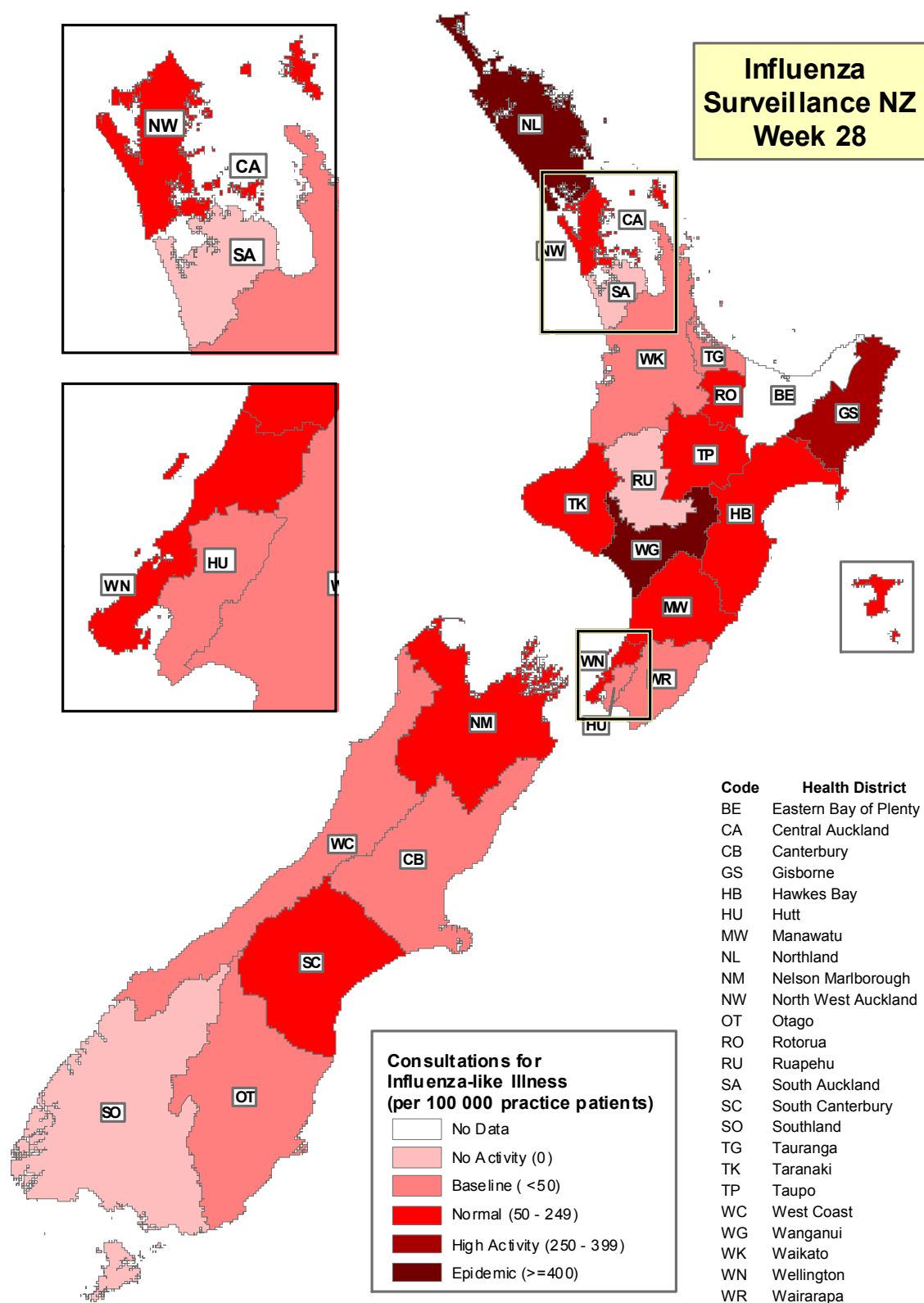


Figure 4 illustrates consultation rates for influenza-like illness mapped by health district for week 28, 2008.

Figure 4



Compiled by: Liza Lopez  
 Population and Environmental Health  
 ESR Kenepuru Science Centre  
 PO Box 50 348  
 PORIRUA

phone: 04 914-0647  
 fax: 04 914-0770  
 email: liza.lopez@esr.cri.nz