

INFLUENZA WEEKLY UPDATE

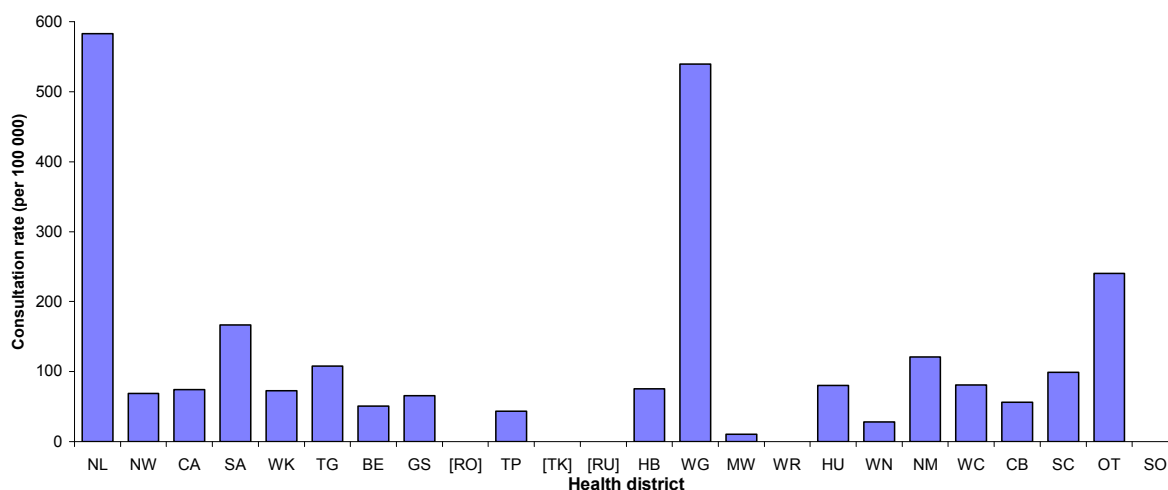
2008/30: 21 – 25 July 2008

In the past week, a total of 309 consultations for influenza-like illness were reported from 78 general practices in 21 of the 24 health districts. This gives a weekly consultation rate of 92.3 per 100 000 patient population.

Figure 1 compares the consultation rates for influenza-like illness for each health district over the past week. Northland had the highest consultation rate (583.1 per 100 000), followed by Wanganui (539.5 per 100 000).

Figure 1

Figure 1: Weekly consultation rates for influenza-like illness by health district week ending 25 July 2008



[] Health districts did not participate for the week.

Note: Some health districts have only one sentinel GP with a small patient denominator so the consultation rates could be high (e.g. Northland).

Fifty-seven swabs were sent from the sentinel surveillance in the past week. Sixty-one swabs were received by virology laboratories. Of these, 28 influenza viruses were identified, 10 A H3N2 (not antigenically sub-typed), eight influenza A (yet to be sub-typed), eight B (not antigenically typed), and two B/Florida/4/2006 – like. The distribution by health district is shown in Table 1.

Table 1

Antigenic Strain	NW	CA	SA	WK	RO	TP	TK	HB	WG	MW	WN	NM	CB	SC	OT	Total
A (yet to be sub-typed)	1	3	0	2	0	0	0	0	0	0	1	0	1	0	0	8
A H3N2 (not antigenically sub-typed)	0	0	0	0	0	1	1	1	1	1	2	0	0	1	2	10
B (not antigenically typed)	0	1	1	2	1	0	0	0	0	0	0	1	0	0	2	8
B/Florida/4/2006 - like	0	0	0	0	0	0	0	0	0	0	0	2	0	0	0	2
Total	1	4	1	4	1	1	1	1	1	1	3	3	1	1	4	28

In addition, 37 influenza viruses were reported this week from the laboratory-based (non-sentinel) surveillance, 24 B (not antigenically typed), and 13 influenza A (yet to be sub-typed). The distribution by health district is shown in Table 2.

Table 2

Antigenic Strain	NL	NW	CA	SA	WK	HB	WN	CB	Total
A (yet to be sub-typed)	1	0	3	6	0	1	0	2	13
B (not antigenically typed)	1	1	4	11	5	0	1	1	24
Total	2	1	7	17	5	1	1	3	37

Figure 2 show the cumulative total of influenza viruses confirmed (sentinel and laboratory-based surveillance) to the end of week 30, 25 July 2008. A total of 377 influenza viruses were identified, 163 influenza A (yet to be sub-typed), 54 A/Brisbane/10/2007 (H3N2) – like, 41 A H3N2 (not antigenically sub-typed), one A H1N1 (not antigenically sub-typed), 98 influenza B (not antigenically typed), and 20 B/Florida/4/2006 – lineage.

Figure 2

Figure 2: Cumulative laboratory-confirmed isolates by health district to 25 July 2008

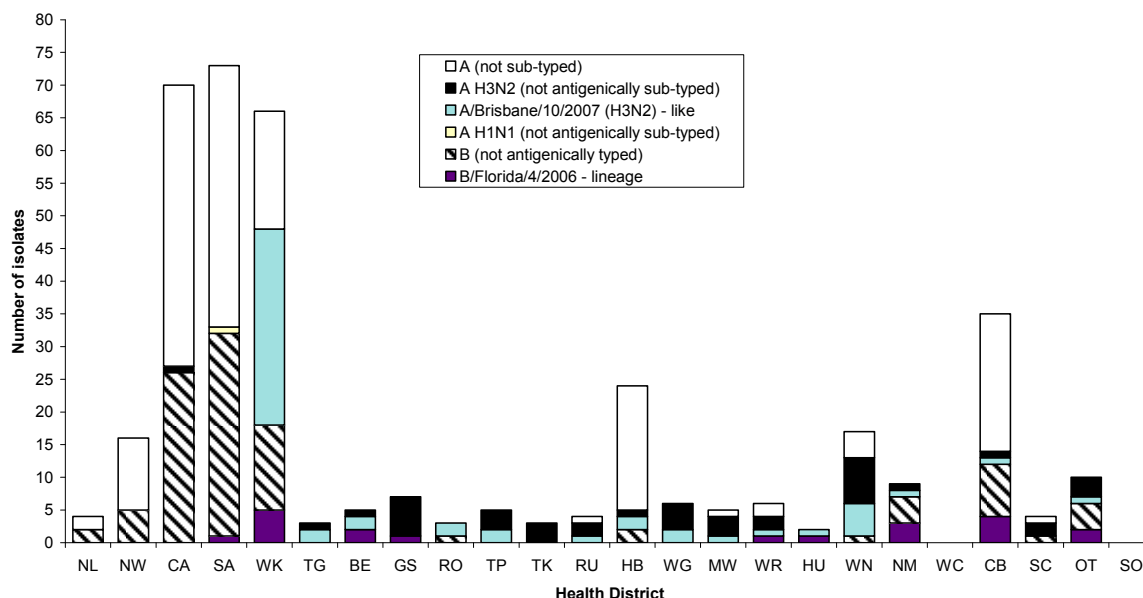


Figure 3 shows the weekly national consultation rates for 2006 and 2007 seasons, and 2008 so far. The current rate of influenza is higher than at the same time last year.

Figure 3

Figure 3: Weekly consultation rates for influenza-like illness in New Zealand, 2006, 2007 and 2008

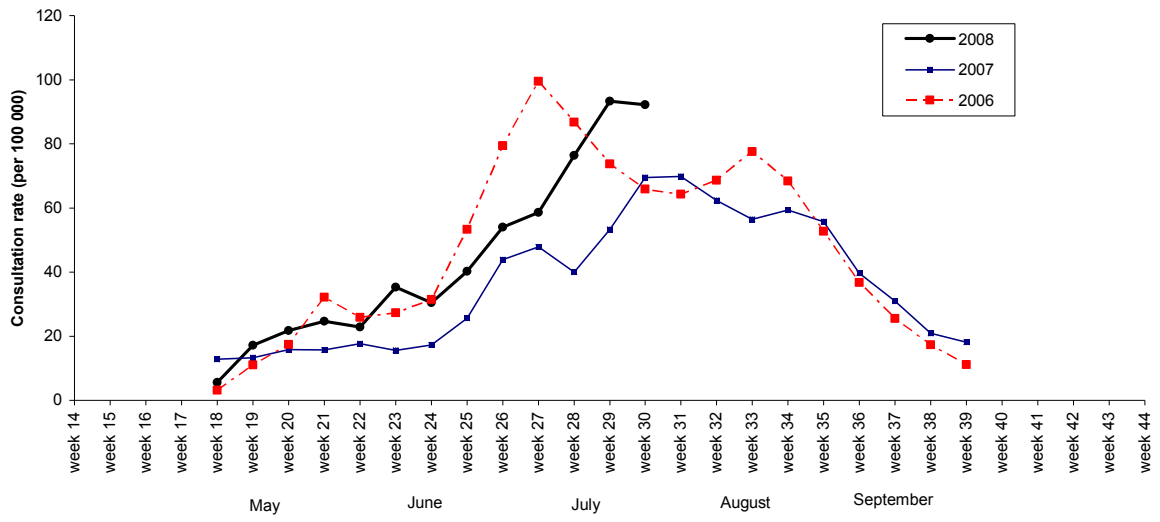
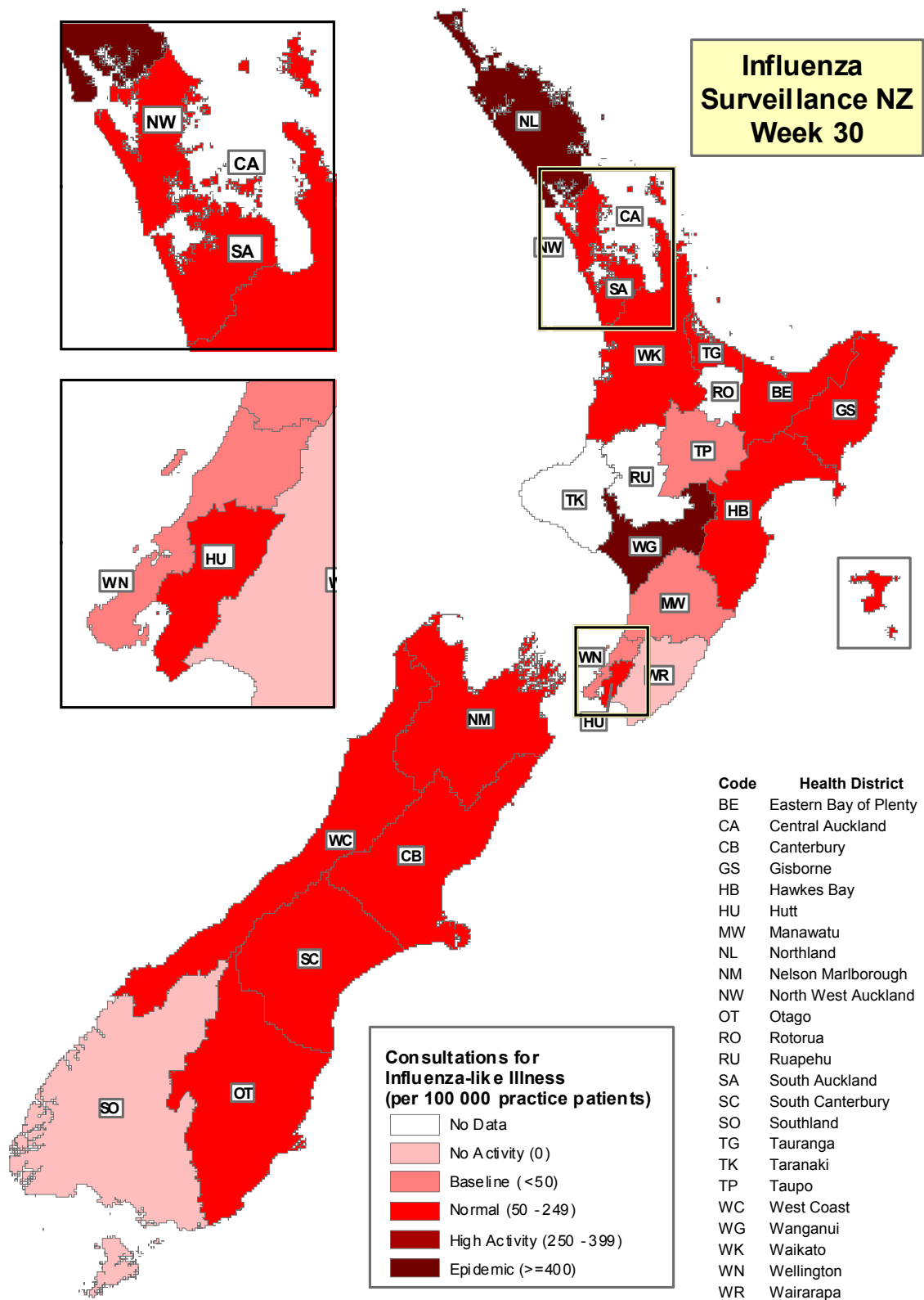


Figure 4 illustrates consultation rates for influenza-like illness mapped by health district for week 30, 2008.

Figure 4



Compiled by: Liza Lopez
 Population and Environmental Health
 ESR Kenepuru Science Centre
 PO Box 50 348
 PORIRUA

phone: 04 914-0647
 fax: 04 914-0770
 email: liza.lopez@esr.cri.nz