

INFLUENZA WEEKLY UPDATE

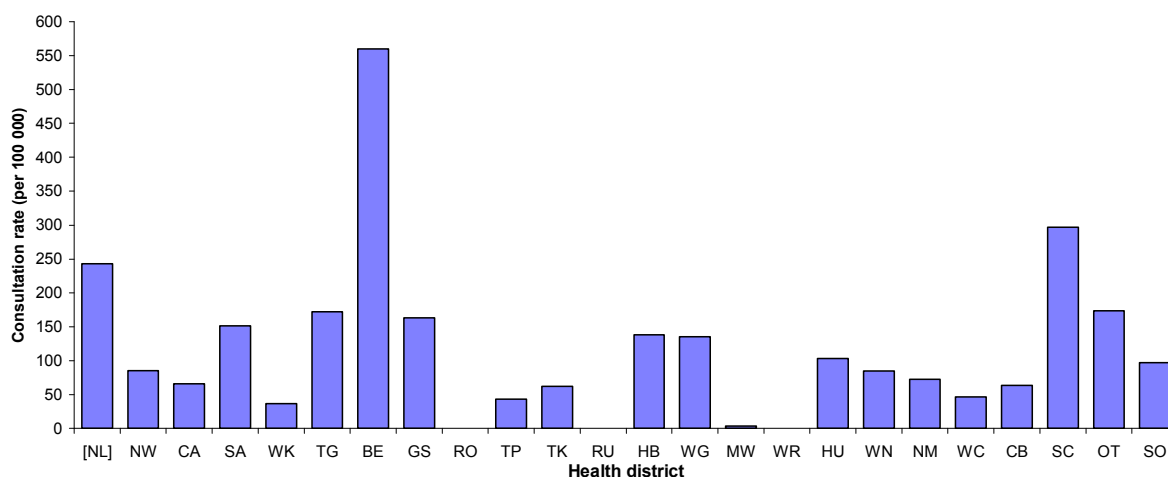
2008/33: 11-15 August 2008

In the past week, a total of 335 consultations for influenza-like illness were reported from 82 general practices in all of the 24 health districts. This gives a weekly consultation rate of 95.2 per 100 000 patient population.

Figure 1 compares the consultation rates for influenza-like illness for each health district over the past week. Eastern Bay of Plenty had the highest consultation rate (559.5 per 100 000), followed by South Canterbury (296.8 per 100 000).

Figure 1

Figure 1: Weekly consultation rates for influenza-like illness by health district week ending 15 August 2008



Sixty-nine swabs were sent from the sentinel surveillance in the past week. Eighty-one swabs were received by virology laboratories. Of these, 21 influenza viruses were identified, 14 B (not antigenically typed), three influenza A (yet to be sub-typed), one A H3N2 (not antigenically sub-typed), one A/Brisbane/10/2007 (H3N2) – like, one B/Florida/4/2006 – like, and one B/Malaysia/2506/2004 – like. The distribution by health district is shown in Table 1.

Table 1

| Antigenic strain | NW | CA | WK | WN | CB | SC | OT | Total |
|--------------------------------------|----------|----------|----------|----------|----------|----------|----------|-----------|
| A (yet to be sub-typed) | 1 | 1 | 0 | 0 | 1 | 0 | 0 | 3 |
| A H3N2 (not antigenically sub-typed) | 0 | 0 | 0 | 0 | 1 | 0 | 0 | 1 |
| A/Brisbane/10/2007 (H3N2) - like | 0 | 0 | 1 | 0 | 0 | 0 | 0 | 1 |
| B (not antigenically typed) | 4 | 4 | 1 | 0 | 4 | 0 | 1 | 14 |
| B/Florida/4/2006 - like | 0 | 0 | 0 | 0 | 0 | 1 | 0 | 1 |
| B/Malaysia/2506/2004 - like | 0 | 0 | 0 | 1 | 0 | 0 | 0 | 1 |
| Total | 5 | 5 | 2 | 1 | 6 | 1 | 1 | 21 |

In addition, 26 influenza viruses were reported this week from the laboratory-based (non-sentinel) surveillance, 21 B (not antigenically typed), four influenza A (yet to be sub-typed), and one A/Brisbane/10/2007 (H3N2) – like. The distribution by health district is shown in Table 2.

Table 2

| Antigenic strain | NW | CA | SA | WK | HB | CB | Total |
|----------------------------------|----------|----------|----------|----------|----------|-----------|-----------|
| A (yet to be sub-typed) | 0 | 0 | 1 | 0 | 0 | 3 | 4 |
| A/Brisbane/10/2007 (H3N2) - like | 0 | 0 | 0 | 1 | 0 | 0 | 1 |
| B (not antigenically typed) | 1 | 1 | 4 | 1 | 3 | 11 | 21 |
| Total | 1 | 1 | 5 | 2 | 3 | 14 | 26 |

Figure 2 show the cumulative total of influenza viruses confirmed (sentinel and laboratory-based surveillance) to the end of week 33, 15 August 2008. A total of 566 influenza viruses were identified, 158 influenza A (yet to be sub-typed), 130 A/Brisbane/10/2007 (H3N2) – like, 45 A H3N2 (not antigenically sub-typed), one A H1N1 (not antigenically sub-typed), 194 influenza B (not antigenically typed), 36 B/Florida/4/2006 – lineage, and two B/Malaysia/2506/2004 – like.

Figure 2

Figure 2: Cumulative laboratory-confirmed isolates by health district to 15 August 2008

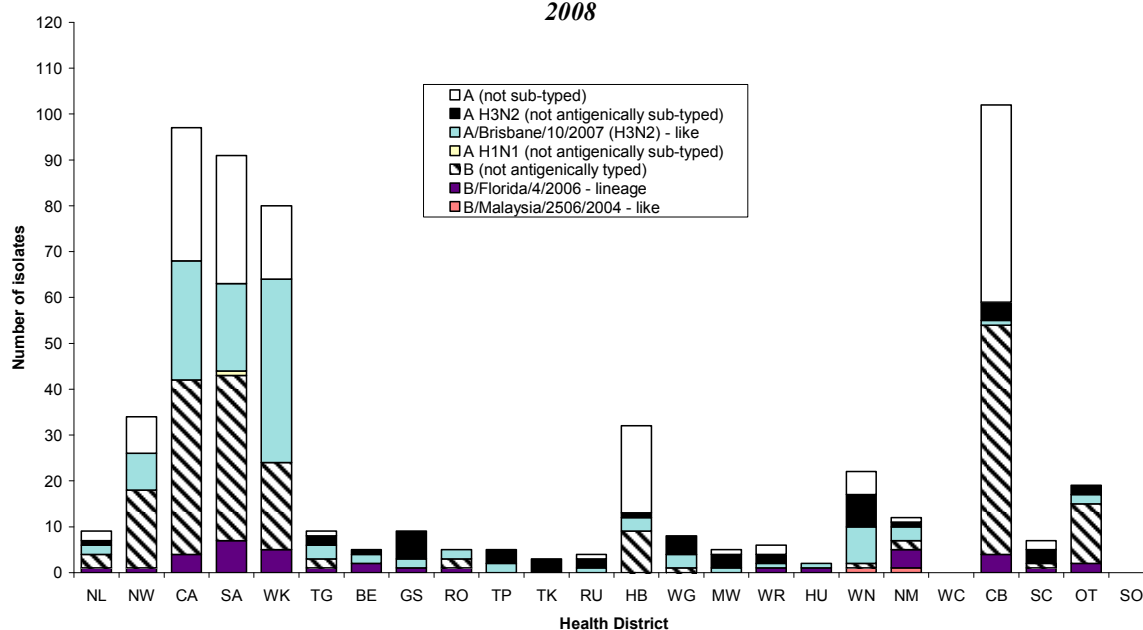


Figure 3 shows the weekly national consultation rates for 2006 and 2007 seasons, and 2008 so far. The current rate of influenza is higher than at the same time last year.

Figure 3

Figure 3: Weekly consultation rates for influenza-like illness in New Zealand, 2006, 2007 and 2008

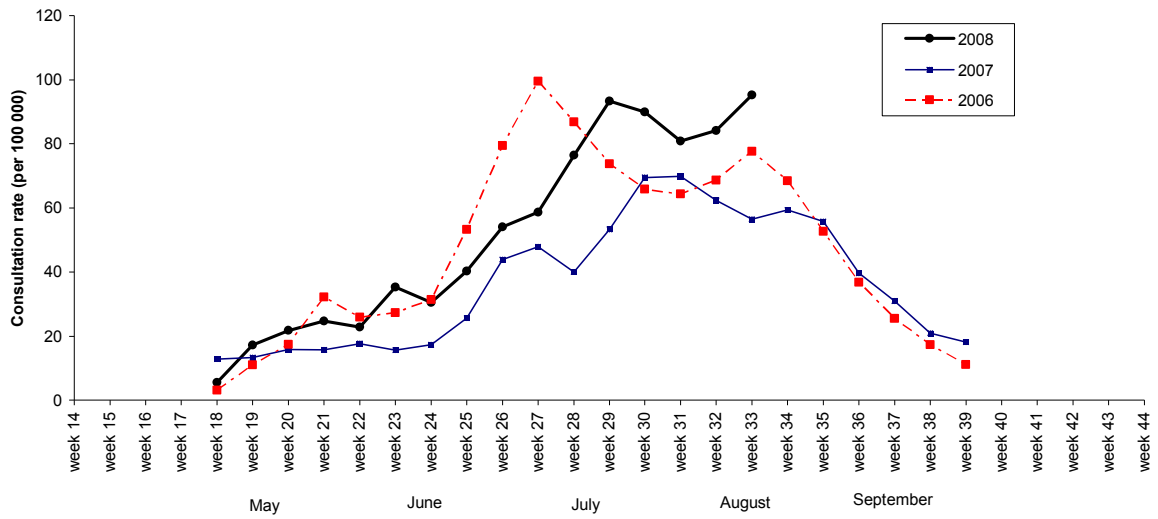
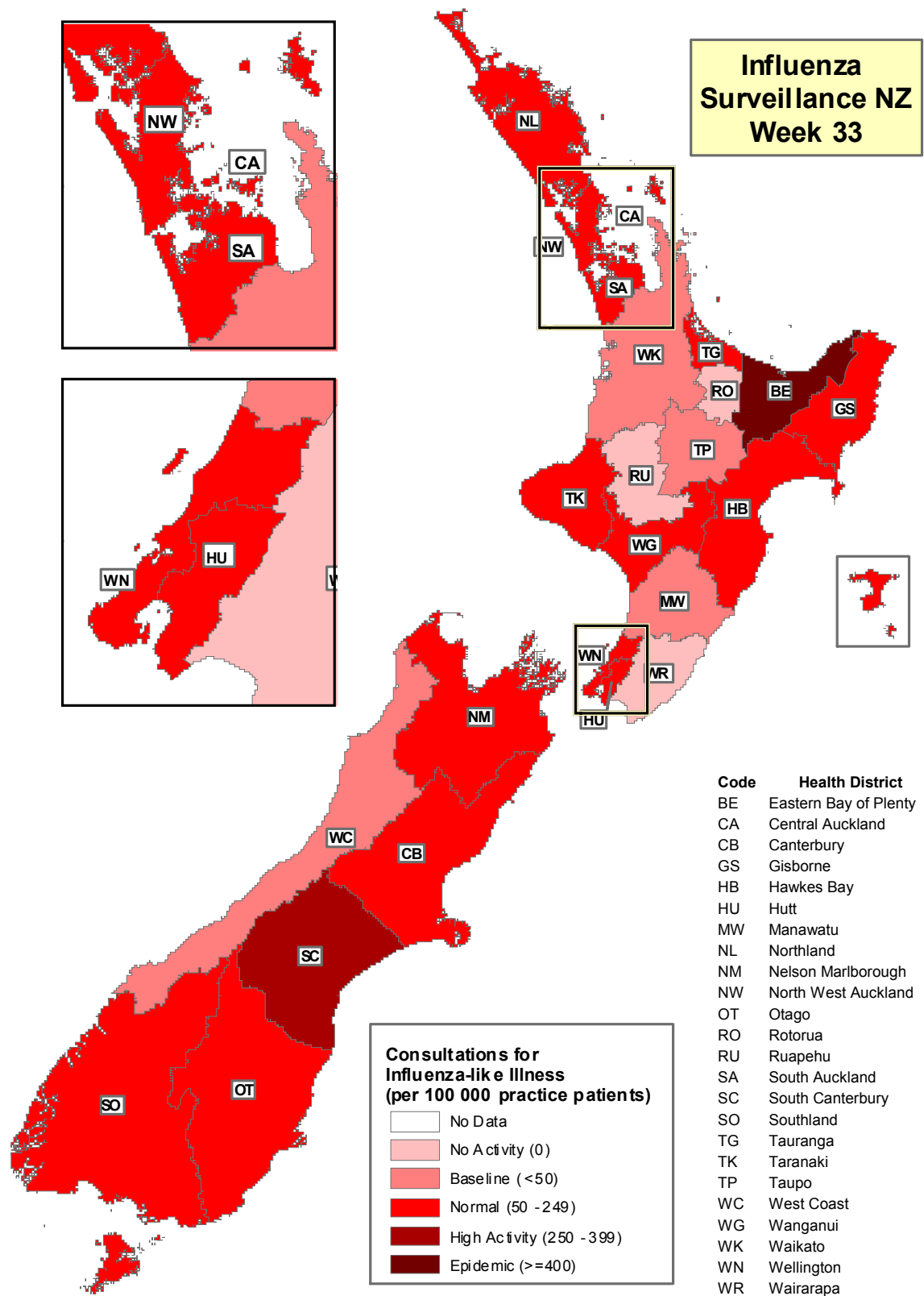


Figure 4 illustrates consultation rates for influenza-like illness mapped by health district for week 33, 2008.

Figure 4



Compiled by: Liza Lopez
 Population and Environmental Health
 ESR Kenepuru Science Centre
 PO Box 50 348
 PORIRUA

phone: 04 914-0647
 fax: 04 914-0770
 email: liza.lopez@esr.cri.nz