

INFLUENZA WEEKLY UPDATE

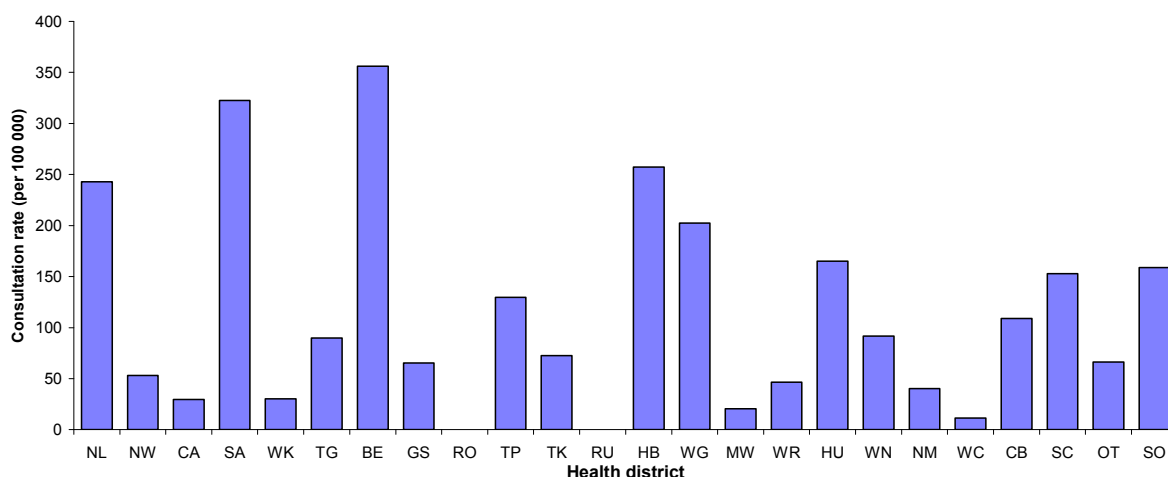
2008/35: 25-29 August 2008

In the past week, a total of 268 consultations for influenza-like illness were reported from 79 general practices in all of the 24 health districts. This gives a weekly consultation rate of 81.6 per 100 000 patient population.

Figure 1 compares the consultation rates for influenza-like illness for each health district over the past week. Eastern Bay of Plenty had the highest consultation rate (356.1 per 100 000), followed by South Auckland (322.6 per 100 000).

Figure 1

Figure 1: Weekly consultation rates for influenza-like illness by health district week ending 29 August 2008



Fifty-six swabs were sent from the sentinel surveillance in the past week. Fifty-one swabs were received by virology laboratories. Of these, 47 influenza viruses were identified, 35 B (not antigenically typed), five A H3N2 (not antigenically sub-typed), three A/Brisbane/10/2007 (H3N2) – like, two influenza A (yet to be sub-typed), and two B/Florida/4/2006 – like. The distribution by health district is shown in Table 1.

Table 1

Antigenic Strain	NW	CA	WK	TG	BE	GS	TP	HB	WG	WR	WN	HU	CB	SC	OT	Total
A (yet to be sub-typed)	0	2	0	0	0	0	0	0	0	0	0	0	0	0	0	2
A H3N2 (not antigenically sub-typed)	0	0	0	0	1	1	0	0	0	0	1	1	0	1	0	5
A/Brisbane/10/2007 (H3N2) - like	0	0	2	0	0	0	0	0	0	0	0	0	1	0	0	3
B (not antigenically typed)	3	8	1	4	4	3	2	1	1	1	3	0	3	0	1	35
B/Florida/4/2006 - like*	0	0	0	0	0	0	0	0	0	0	0	0	2	0	0	2
Total	3	10	3	4	5	4	2	1	1	1	4	1	6	1	1	47

*These two isolates were taken in June and July 2008 but were only reported this week.

In addition, 53 influenza viruses were reported this week from the laboratory-based (non-sentinel) surveillance, 42 B (not antigenically typed) and 11 influenza A (yet to be sub-typed). The distribution by health district is shown in Table 2.

Table 2

Antigenic Strain	NW	CA	SA	WK	HB	WN	NM	CB	Total
A (yet to be sub-typed)	1	2	0	1	2	0	0	5	11
B (not antigenically typed)	0	7	1	6	4	2	1	21	42
Total	1	9	1	7	6	2	1	26	53

Figure 2 show the cumulative total of influenza viruses confirmed (sentinel and laboratory-based surveillance) to the end of week 35, 29 August 2008. A total of 780 influenza viruses were identified, 185 influenza A (yet to be sub-typed), 134 A/Brisbane/10/2007 (H3N2) – like, 59 A H3N2 (not antigenically sub-typed), one A H1N1 (not antigenically sub-typed), 343 influenza B (not antigenically typed), 42 B/Florida/4/2006 – lineage, and 16 B/Malaysia/2506/2004 – like.

Figure 2

Figure 2: Cumulative laboratory-confirmed isolates by health district to 29 August 2008

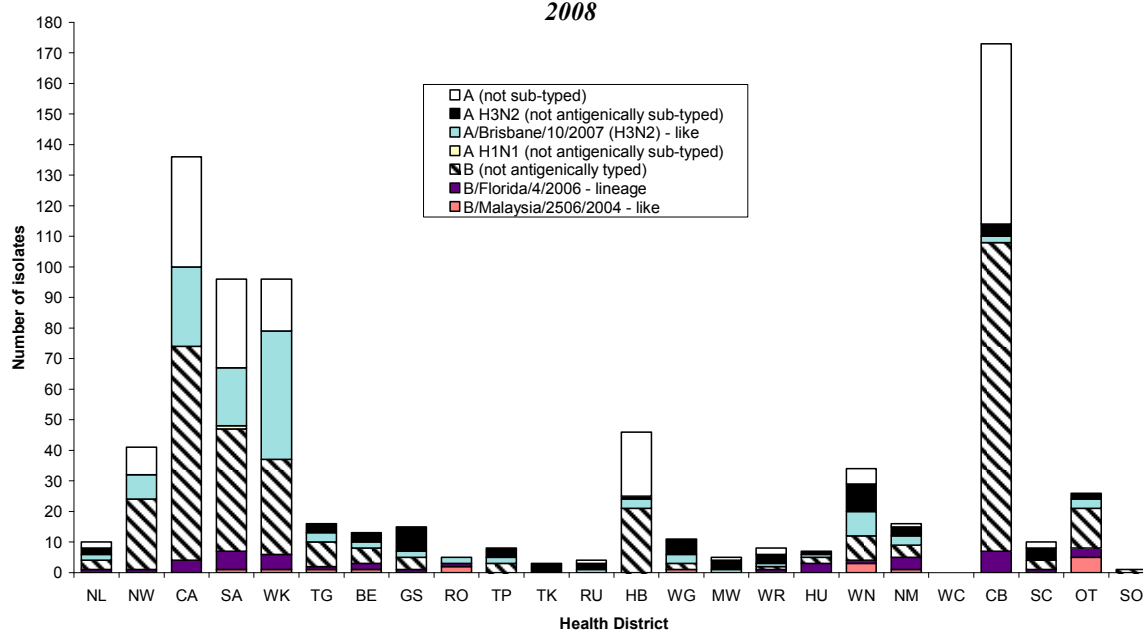


Figure 3 shows the weekly national consultation rates for 2006 and 2007 seasons, and 2008 so far. The current rate of influenza is higher than at the same time last year.

Figure 3

Figure 3: Weekly consultation rates for influenza-like illness in New Zealand, 2006, 2007 and 2008

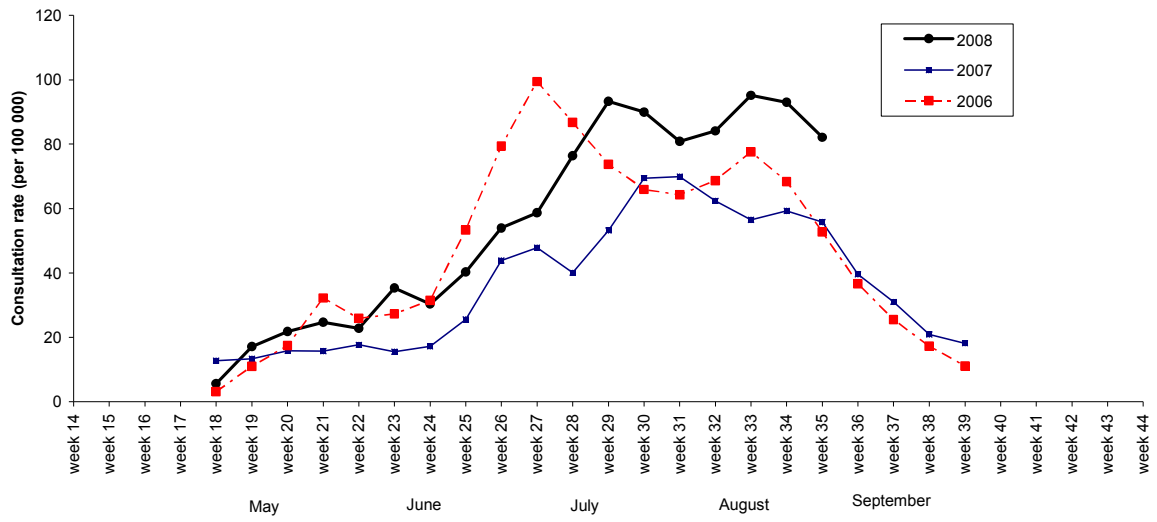
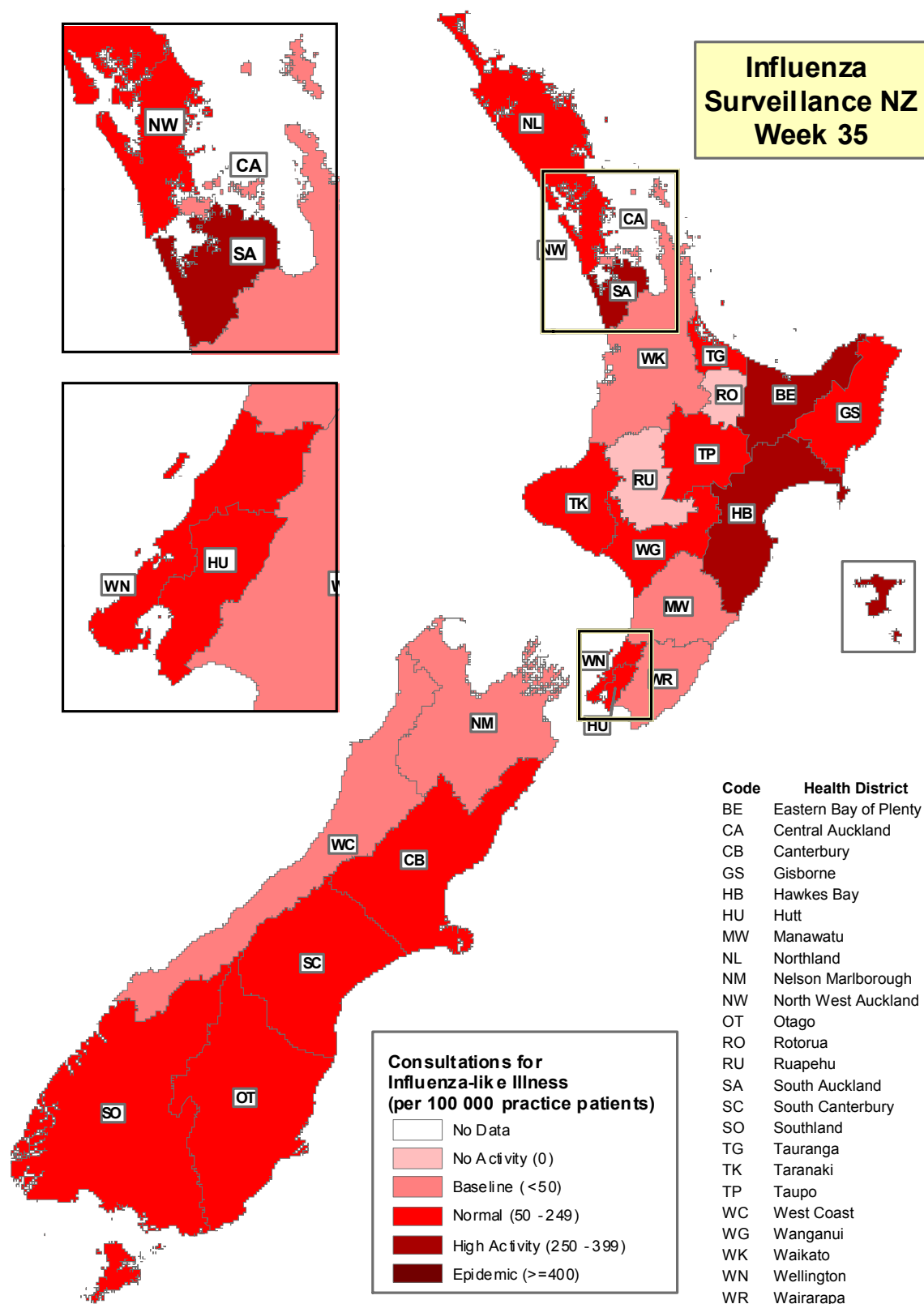


Figure 4 illustrates consultation rates for influenza-like illness mapped by health district for week 35, 2008.

Figure 4



Compiled by: Liza Lopez
 Population and Environmental Health
 ESR Kenepuru Science Centre
 PO Box 50 348
 PORIRUA

phone: 04 914-0647
 fax: 04 914-0770
 email: liza.lopez@esr.cri.nz