

INFLUENZA WEEKLY UPDATE

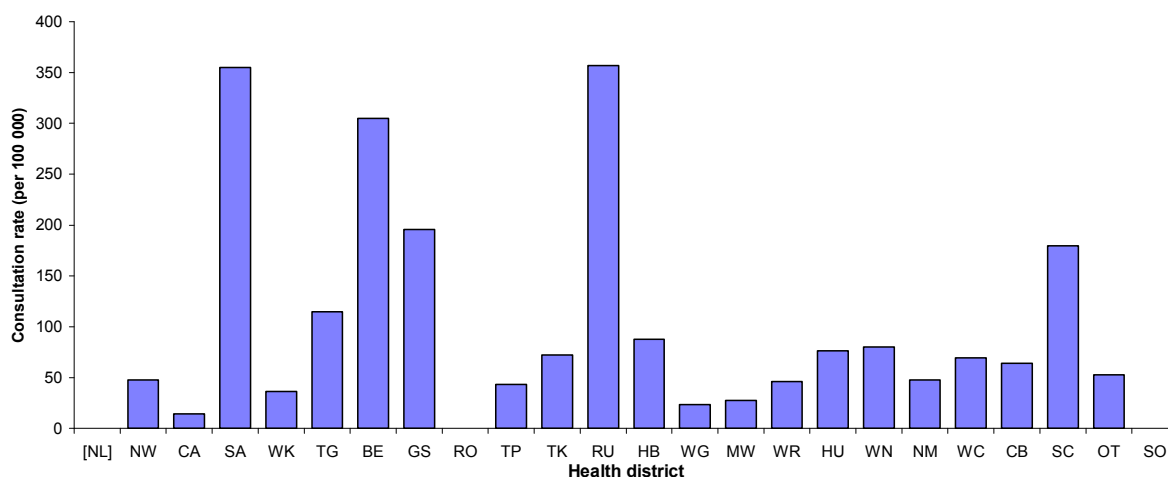
2008/36: 1 - 5 September 2008

In the past week, a total of 194 consultations for influenza-like illness were reported from 80 general practices in 23 of the 24 health districts. This gives a weekly consultation rate of 58.0 per 100 000 patient population.

Figure 1 compares the consultation rates for influenza-like illness for each health district over the past week. Ruapehu had the highest consultation rate (356.7 per 100 000), followed by South Auckland (354.8 per 100 000).

Figure 1

Figure 1: Weekly consultation rates for influenza-like illness by health district week ending 5 September 2008



[] Health district did not participate for the week.

Forty-five swabs were sent from the sentinel surveillance in the past week. Fifty-two swabs were received by virology laboratories. Of these, 52 influenza viruses were identified, 22 B/Malaysia/2506/2004 – like, 16 B (not antigenically typed), six A/Brisbane/10/2007 (H3N2) – like, five B/Florida/4/2006 – like, one A (yet to be sub-typed), one A H3N2 (not antigenically sub-typed), and one A/Brisbane/59/2007 (H1N1) – like. The distribution by health district is shown in Table 1.

Table 1

Antigenic Strain	NW	CA	SA	WK	TG	BE	GS	TP	HB	WG	WR	WN	HU	NM	CB	Total
A (yet to be sub-typed)	0	0	0	0	0	0	0	0	0	0	0	0	0	0	1	1
A H3N2 (not antigenically sub-typed)	0	0	0	0	0	0	0	0	0	0	1	0	0	0	0	1
A/Brisbane/10/2007 (H3N2) - like	0	0	0	0	0	0	0	0	0	0	0	0	1	0	5	6
A/Brisbane/59/2007 (H1N1) - like	0	0	0	0	0	0	0	0	0	0	0	0	0	0	1	1
B (not antigenically typed)	3	3	1	1	0	0	0	0	1	0	1	0	0	2	4	16
B/Florida/4/2006 - like	0	0	0	1	0	1	0	0	0	0	0	1	0	0	2	5
B/Malaysia/2506/2004 - like	0	0	0	0	3	1	1	1	1	1	0	6	0	0	8	22
Total	3	3	1	2	3	2	1	1	2	1	2	7	1	2	21	52

In addition, 41 influenza viruses were reported this week from the laboratory-based (non-sentinel) surveillance, 31 B (not antigenically typed), eight influenza A (yet to be sub-typed), and two B/Florida/4/2006 – like. The distribution by health district is shown in Table 2.

Table 2

Antigenic Strain	CA	SA	WK	HB	CB	Total
A (yet to be sub-typed)	2	1	0	0	5	8
B (not antigenically typed)	2	0	2	2	25	31
B/Florida/4/2006 - like	0	0	2	0	0	2
Total	4	1	4	2	30	41

Figure 2 show the cumulative total of influenza viruses confirmed (sentinel and laboratory-based surveillance) to the end of week 36, 5 September 2008. A total of 873 influenza viruses were identified, 194 influenza A (yet to be sub-typed), 140 A/Brisbane/10/2007 (H3N2) – like, 60 A H3N2 (not antigenically sub-typed), one A/Brisbane/59/2007 (H1N1) – like, one A H1N1 (not antigenically sub-typed), 385 influenza B (not antigenically typed), 50 B/Florida/4/2006 – lineage, and 42 B/Malaysia/2506/2004 – like.

Figure 2

Figure 2: Cumulative laboratory-confirmed isolates by health district to 5 September 2008

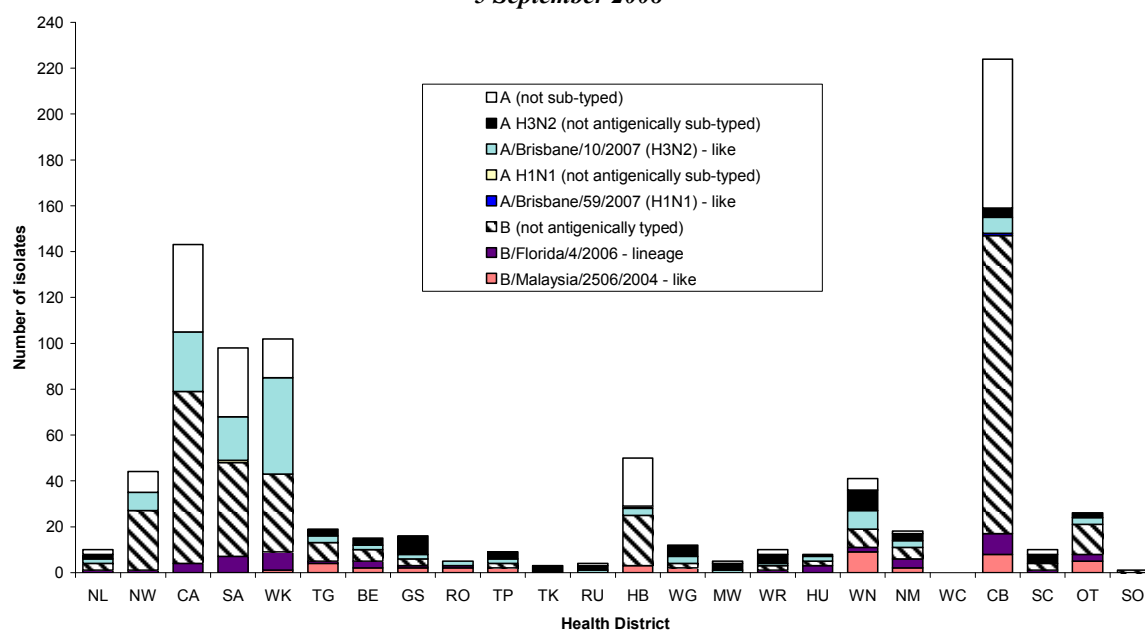


Figure 3 shows the weekly national consultation rates for 2006 and 2007 seasons, and 2008 so far. The current rate of influenza is higher than at the same time last year.

Figure 3

Figure 3: Weekly consultation rates for influenza-like illness in New Zealand, 2006, 2007 and 2008

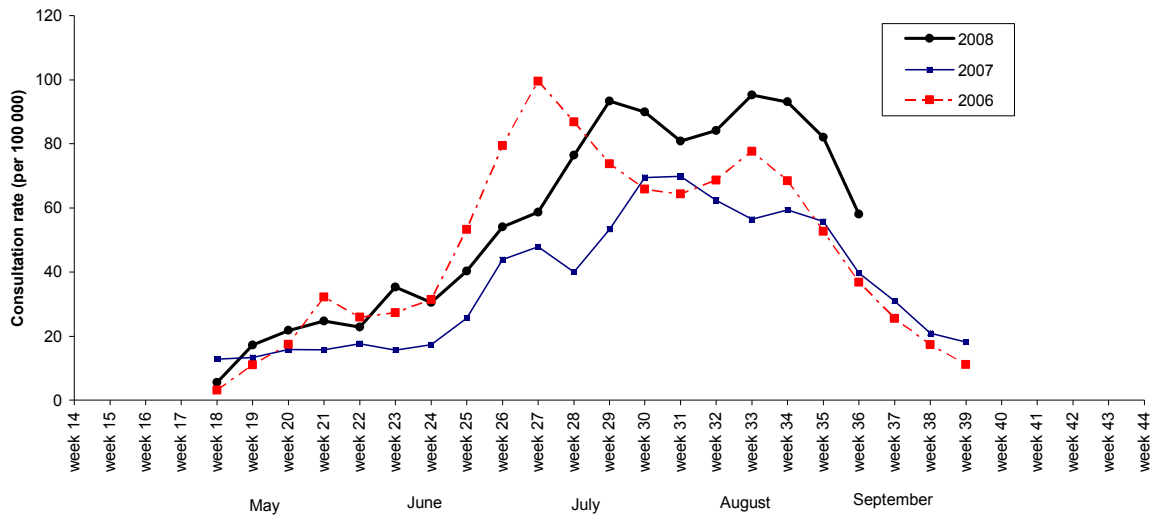
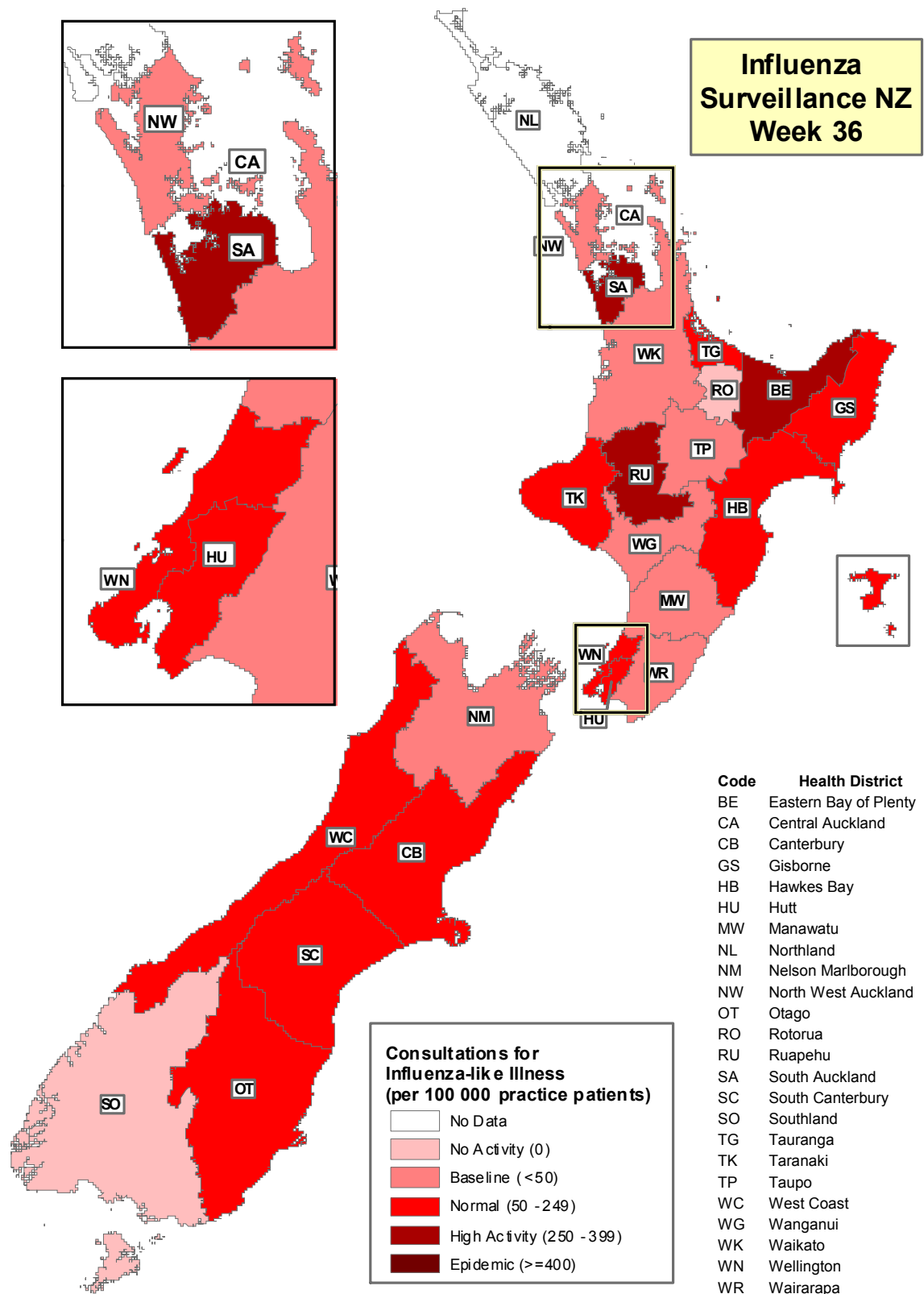


Figure 4 illustrates consultation rates for influenza-like illness mapped by health district for week 36, 2008.

Figure 4



Compiled by: Liza Lopez
 Population and Environmental Health
 ESR Kenepuru Science Centre
 PO Box 50 348
 PORIRUA

phone: 04 914-0647
 fax: 04 914-0770
 email: liza.lopez@esr.cri.nz