

# INFLUENZA WEEKLY UPDATE

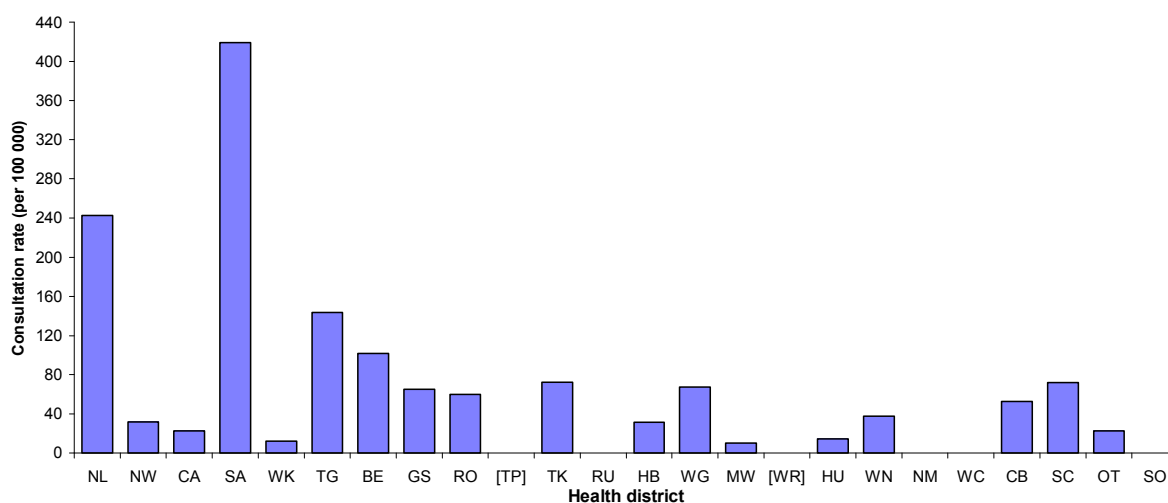
2008/38: 15 - 19 September 2008

In the past week, a total of 110 consultations for influenza-like illness were reported from 77 general practices in 22 of the 24 health districts. This gives a weekly consultation rate of 34.1 per 100 000 patient population.

Figure 1 compares the consultation rates for influenza-like illness for each health district over the past week. South Auckland had the highest consultation rate (419.4 per 100 000), followed by Northland (243.0 per 100 000).

**Figure 1**

*Figure 1: Weekly consultation rates for influenza-like illness by health district week ending 19 September 2008*



Twenty-seven swabs were sent from the sentinel surveillance in the past week. Twenty-five swabs were received by virology laboratories. Of these, 15 influenza viruses were identified, nine B/Malaysia/2506/2004 – like, four B (not antigenically typed), one A (yet to be sub-typed), and one B/Florida/4/2006 – like. The distribution by health district is shown in Table 1.

**Table 1**

Antigenic Strain	WK	TG	TP	WN	HU	CB	OT	Total
A (yet to be sub-typed)	0	0	0	0	0	1	0	1
B (not antigenically typed)	2	0	0	0	0	2	0	4
B/Florida/4/2006 - like	0	0	0	0	0	1	0	1
B/Malaysia/2506/2004 - like	0	1	1	1	1	4	1	9
<b>Total</b>	<b>2</b>	<b>1</b>	<b>1</b>	<b>1</b>	<b>1</b>	<b>8</b>	<b>1</b>	<b>15</b>

In addition, 17 influenza viruses were reported this week from the laboratory-based (non-sentinel) surveillance, 12 B (not antigenically typed) and five A (yet to be sub-typed). The distribution by health district is shown in Table 2.

**Table 2**

Antigenic Strain	CA	WK	CB	Total
A (yet to be sub-typed)	2	0	3	5
B (not antigenically typed)	5	1	6	12
<b>Total</b>	<b>7</b>	<b>1</b>	<b>9</b>	<b>17</b>

Figure 2 show the cumulative total of influenza viruses confirmed (sentinel and laboratory-based surveillance) to the end of week 38, 19 September 2008. A total of 941 influenza viruses were identified, 199 influenza A (yet to be sub-typed), 156 A/Brisbane/10/2007 (H3N2) – like, 50 A H3N2 (not antigenically sub-typed), one A/Brisbane/59/2007 (H1N1) – like, one A H1N1 (not antigenically sub-typed), 414 influenza B (not antigenically typed), 67 B/Malaysia/2506/2004 – like, and 53 B/Florida/4/2006 – lineage.

**Figure 2**

*Figure 2: Cumulative laboratory-confirmed isolates by health district to 19 September 2008*

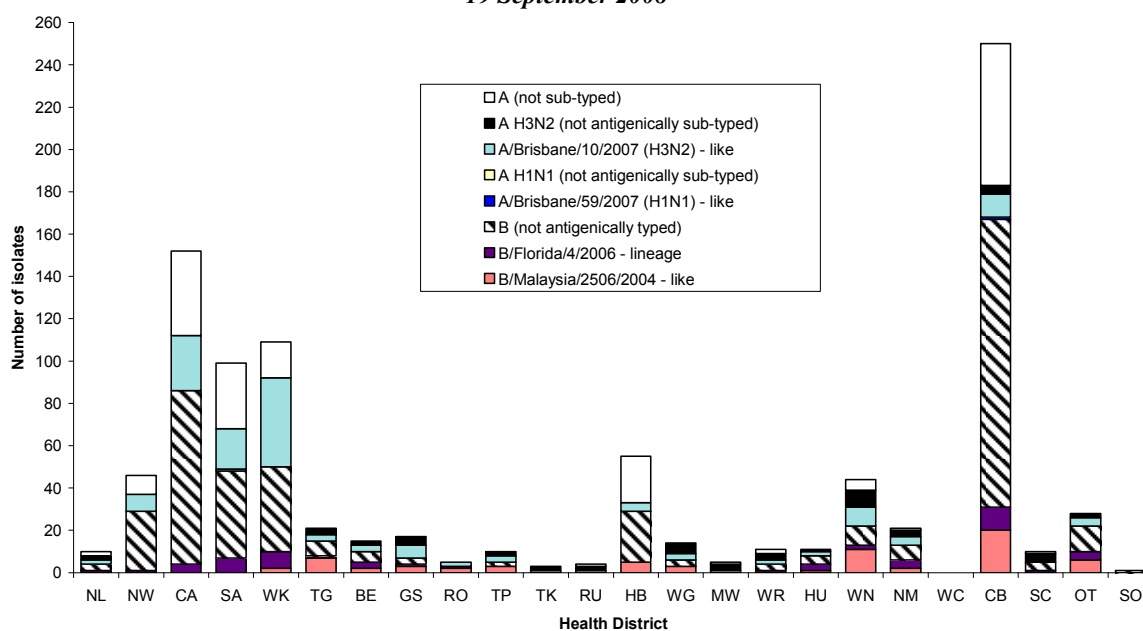


Figure 3 shows the weekly national consultation rates for 2006 and 2007 seasons, and 2008 so far. The current rate of influenza is higher than at the same time last year.

**Figure 3**

*Figure 3: Weekly consultation rates for influenza-like illness in New Zealand, 2006, 2007 and 2008*

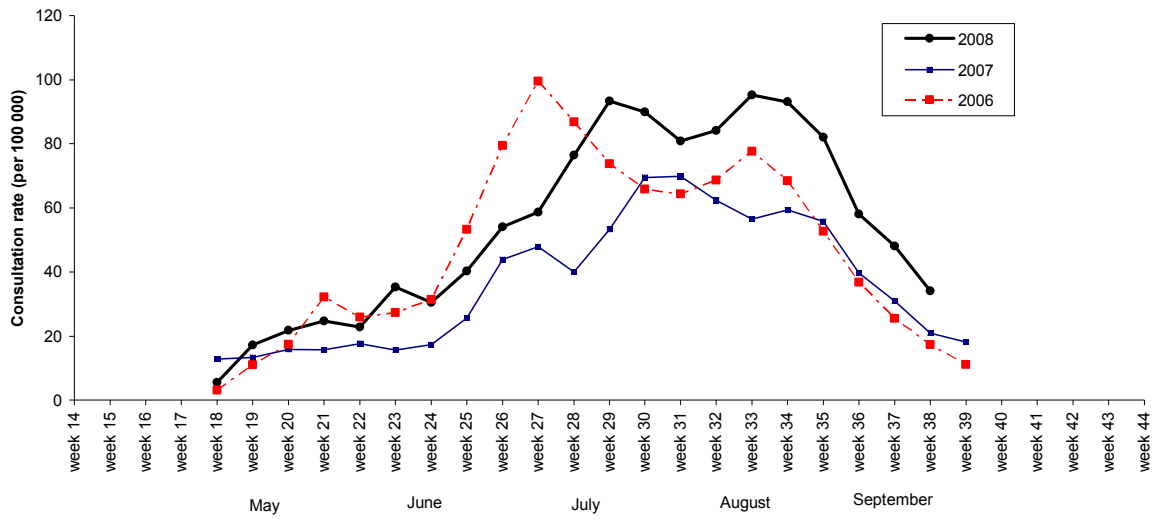
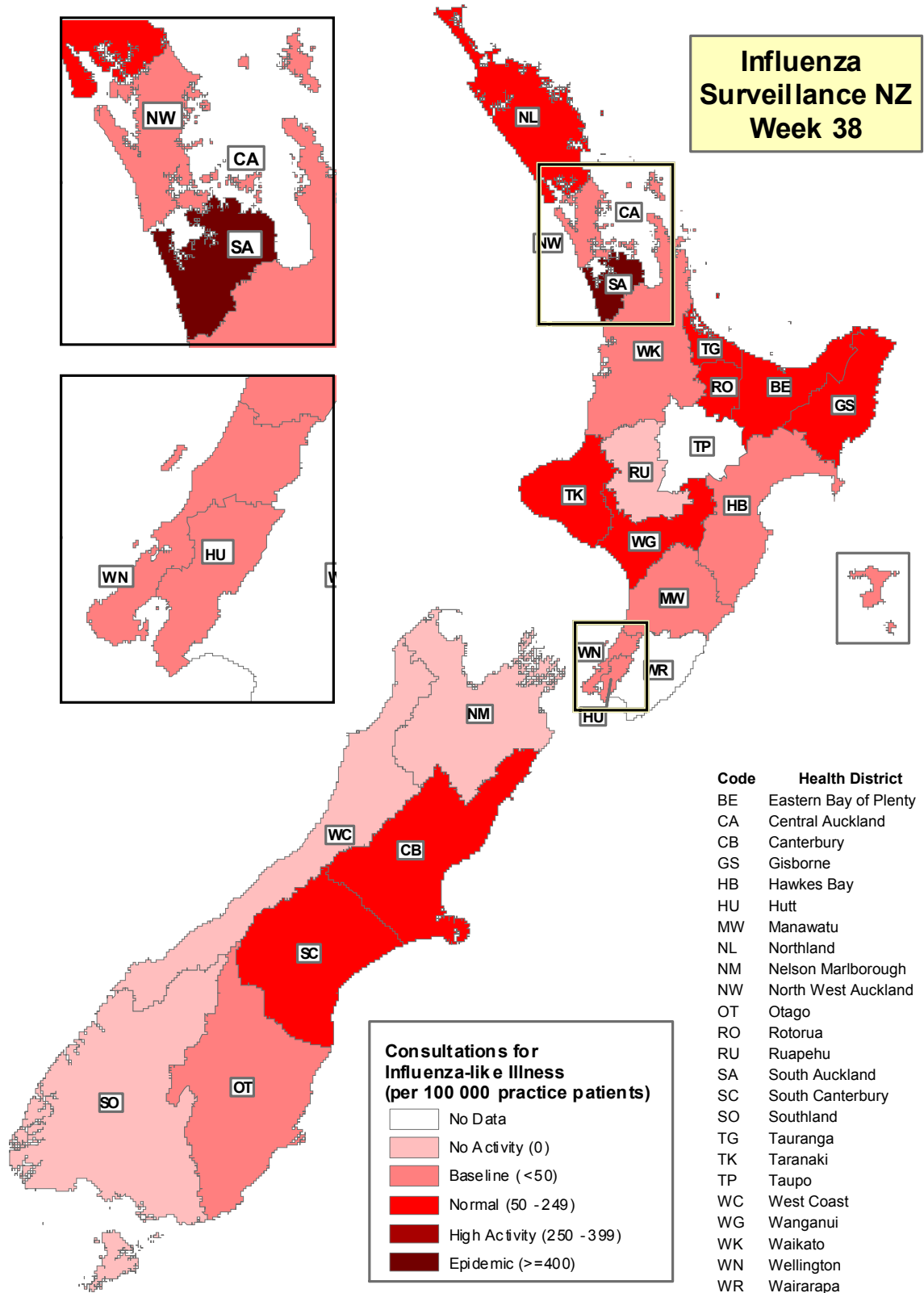


Figure 4 illustrates consultation rates for influenza-like illness mapped by health district for week 38, 2008.

Figure 4



Compiled by: Liza Lopez  
 Population and Environmental Health  
 ESR Kenepuru Science Centre  
 PO Box 50 348  
 PORIRUA

phone: 04 914-0647  
 fax: 04 914-0770  
 email: liza.lopez@esr.cri.nz