

# INFLUENZA WEEKLY UPDATE

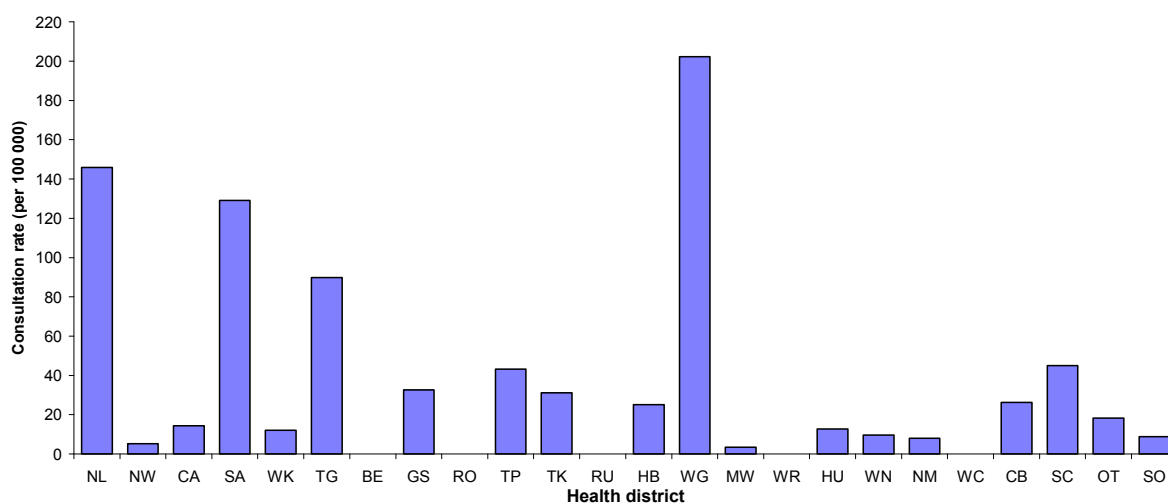
2008/39: 22 - 26 September 2008

In the past week, a total of 61 consultations for influenza-like illness were reported from 80 general practices in all of the 24 health districts. This gives a weekly consultation rate of 19.1 per 100 000 patient population.

Figure 1 compares the consultation rates for influenza-like illness for each health district over the past week. Wanganui had the highest consultation rate (202.3 per 100 000), followed by Northland (145.8 per 100 000).

**Figure 1**

*Figure 1: Weekly consultation rates for influenza-like illness by health district week ending 26 September 2008*



Seventeen swabs were sent from the sentinel surveillance in the past week. Twenty-one swabs were received by virology laboratories. Of these, 14 influenza B (not antigenically typed) were identified. The distribution by health district is shown in Table 1.

**Table 1**

Antigenic Strain	NL	TG	BE	RO	RU	MW	WN	HU	SC	OT	Total
B (not antigenically typed)	1	2	1	2	1	1	1	1	3	1	14
<b>Total</b>	<b>1</b>	<b>2</b>	<b>1</b>	<b>2</b>	<b>1</b>	<b>1</b>	<b>1</b>	<b>1</b>	<b>3</b>	<b>1</b>	<b>14</b>

In addition, nine influenza viruses were reported this week from the laboratory-based (non-sentinel) surveillance, eight B (not antigenically typed) and one A (yet to be sub-typed). The distribution by health district is shown in Table 2.

**Table 2**

Antigenic Strain	CA	WK	CB	Total
A (yet to be sub-typed)	0	0	1	1
B (not antigenically typed)	1	1	6	8
<b>Total</b>	<b>1</b>	<b>1</b>	<b>7</b>	<b>9</b>

Figure 2 show the cumulative total of influenza viruses confirmed (sentinel and laboratory-based surveillance) to the end of week 39, 26 September 2008. A total of 964 influenza viruses were identified, 200 influenza A (yet to be sub-typed), 156 A/Brisbane/10/2007 (H3N2) – like, 50 A H3N2 (not antigenically sub-typed), one A/Brisbane/59/2007 (H1N1) – like, one A H1N1 (not antigenically sub-typed), 436 influenza B (not antigenically typed), 67 B/Malaysia/2506/2004 – like, and 53 B/Florida/4/2006 – lineage.

**Figure 2**

*Figure 2: Cumulative laboratory-confirmed isolates by health district to 26 September 2008*

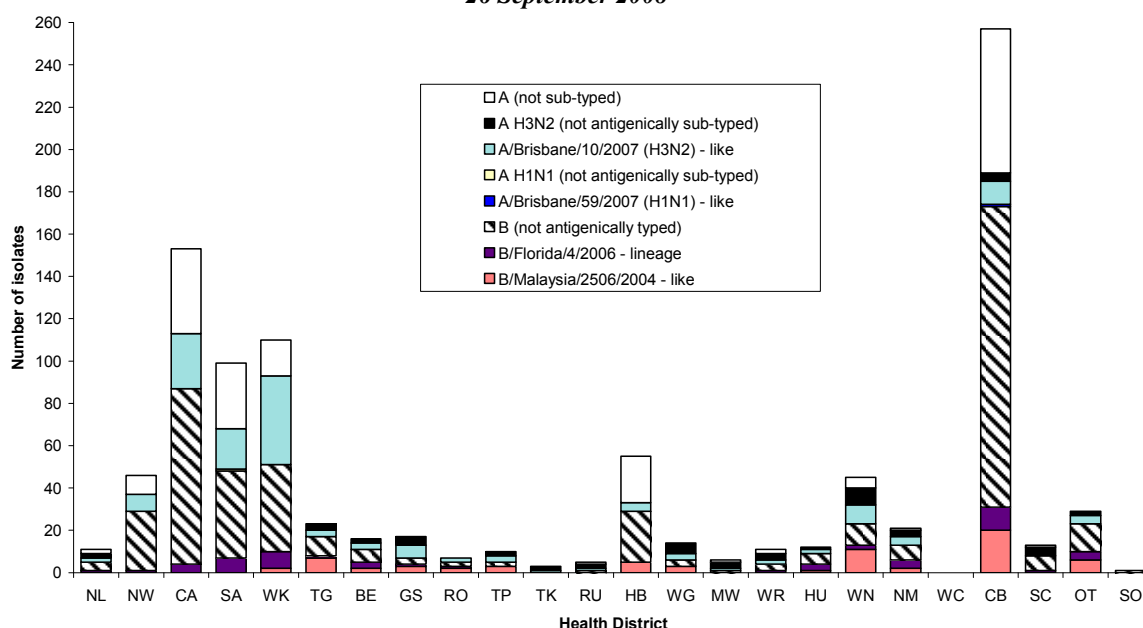


Figure 3 shows the weekly national consultation rates for 2006 and 2007 seasons, and 2008 so far. The current rate of influenza is higher than at the same time last year.

**Figure 3**

*Figure 3: Weekly consultation rates for influenza-like illness in New Zealand, 2006, 2007 and 2008*

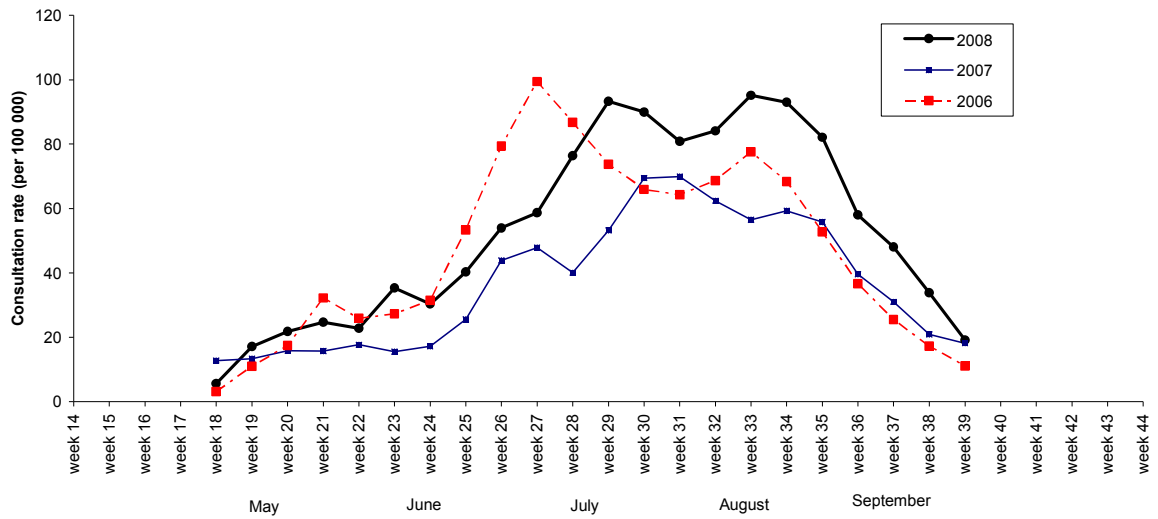
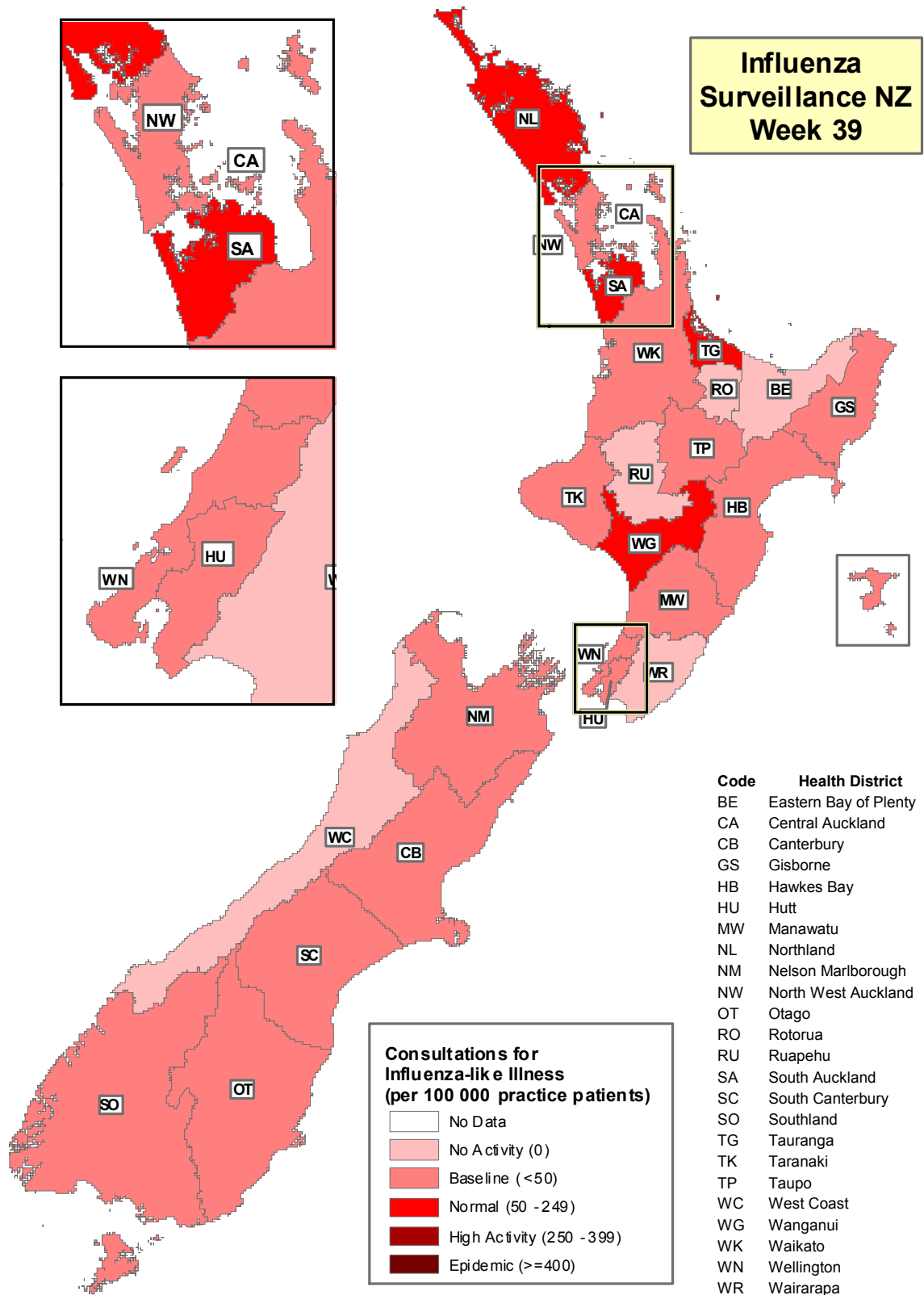


Figure 4 illustrates consultation rates for influenza-like illness mapped by health district for week 39, 2008.

Figure 4



Compiled by: Liza Lopez  
 Population and Environmental Health  
 ESR Kenepuru Science Centre  
 PO Box 50 348  
 PORIRUA

phone: 04 914-0647  
 fax: 04 914-0770  
 email: liza.lopez@esr.cri.nz