

# INFLUENZA WEEKLY UPDATE

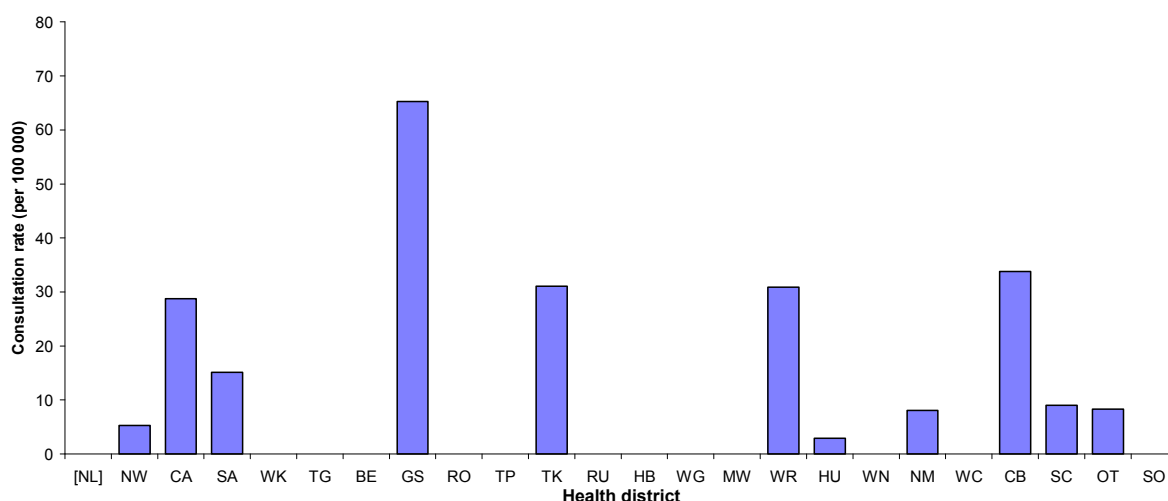
2008/40: 29 September – 3 October 2008

In the past week, a total of 38 consultations for influenza-like illness were reported from 79 general practices in 23 of the 24 health districts. This gives a weekly consultation rate of 11.5 per 100 000 patient population.

Figure 1 compares the consultation rates for influenza-like illness for each health district over the past week. Gisborne had the highest consultation rate (65.3 per 100 000), followed by Canterbury (33.8 per 100 000).

**Figure 1**

*Figure 1: Weekly consultation rates for influenza-like illness by health district week ending 3 October 2008*



[ ] Health district did not participate for the week.

Seven swabs were sent from the sentinel surveillance in the past week. Twelve swabs were received by virology laboratories. Of these, 28 influenza viruses were identified, 11 B/Malaysia/2506/2004 – like, 10 B (not antigenically typed), two A (yet to be sub-typed), two A/Brisbane/10/2007 (H3N2) – like, two B/Florida/4/2006 – like, and one A H3N2 (not antigenically sub-typed). The distribution by health district is shown in Table 1.

**Table 1**

Antigenic Strain	NL	WK	TG	GS	RU	MW	CB	OT	Total
A (not sub-typed)	0	2	0	0	0	0	0	0	2
A H3N2 (not antigenically sub-typed)	0	0	0	0	0	0	1	0	1
A/Brisbane/10/2007 (H3N2) - like	0	0	0	0	0	0	2	0	2
B (not antigenically typed)	1	1	2	1	1	1	1	2	10
B/Florida/4/2006 - like	0	1	0	0	0	0	0	1	2
B/Malaysia/2506/2004 - like	0	4	0	0	0	0	7	0	11
<b>Total</b>	<b>1</b>	<b>8</b>	<b>2</b>	<b>1</b>	<b>1</b>	<b>1</b>	<b>11</b>	<b>3</b>	<b>28</b>

In addition, three influenza viruses were reported this week from the laboratory-based (non-sentinel) surveillance, two A (yet to be sub-typed) and one B (not antigenically typed). The distribution by health district is shown in Table 2.

**Table 2**

Antigenic Strain	CA	CB	Total
A (not sub-typed)	0	2	2
B (not antigenically typed)	1	0	1
<b>Total</b>	<b>1</b>	<b>2</b>	<b>3</b>

Figure 2 show the cumulative total of influenza viruses confirmed (sentinel and laboratory-based surveillance) to the end of week 40, 3 October 2008. A total of 995 influenza viruses were identified, 178 influenza A (yet to be sub-typed), 176 A/Brisbane/10/2007 (H3N2) – like, 59 A H3N2 (not antigenically sub-typed), one A/Brisbane/59/2007 (H1N1) – like, one A H1N1 (not antigenically sub-typed), 420 influenza B (not antigenically typed), 100 B/Malaysia/2506/2004 – like, and 60 B/Florida/4/2006 – lineage.

**Figure 2**

*Figure 2: Cumulative laboratory-confirmed isolates by health district to 3 October 2008*

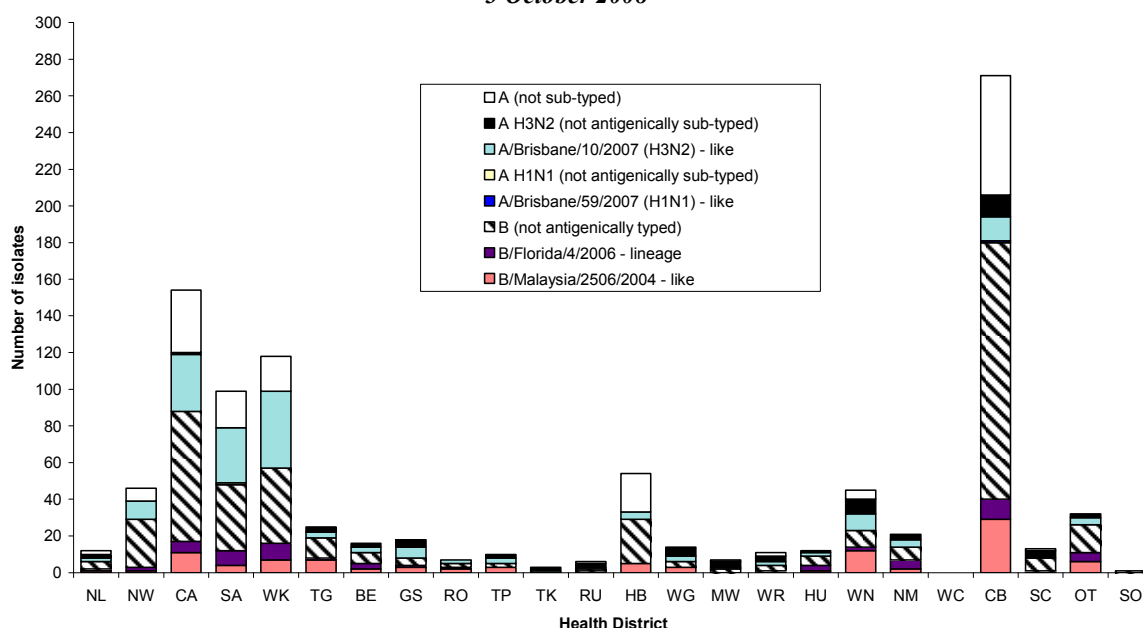


Figure 3 shows the weekly national consultation rates for 2006 and 2007 seasons, and 2008 so far. The current rate of influenza is higher than at the same time last year.

**Figure 3**

*Figure 3: Weekly consultation rates for influenza-like illness in New Zealand, 2006, 2007 and 2008*

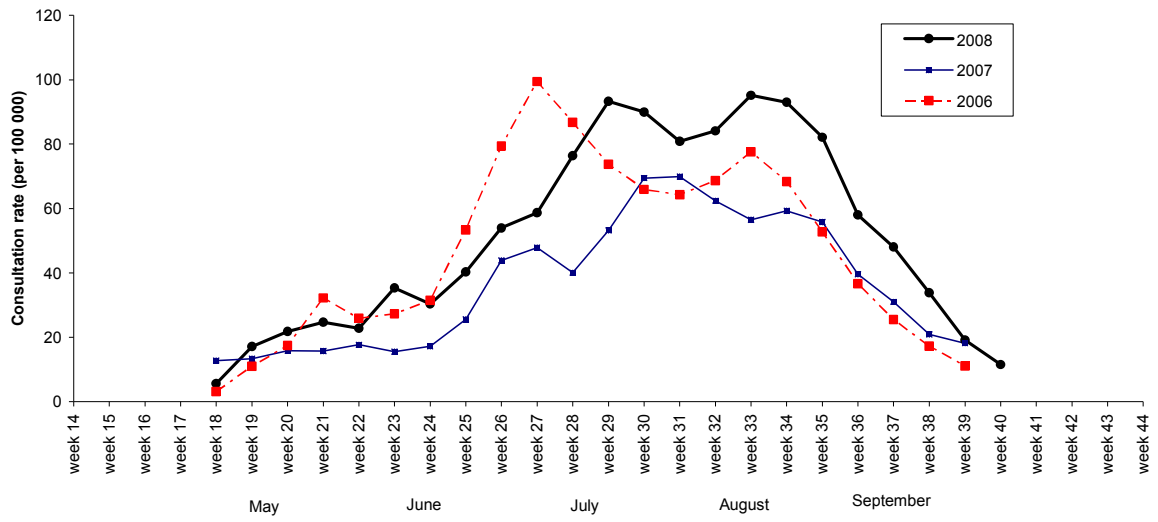
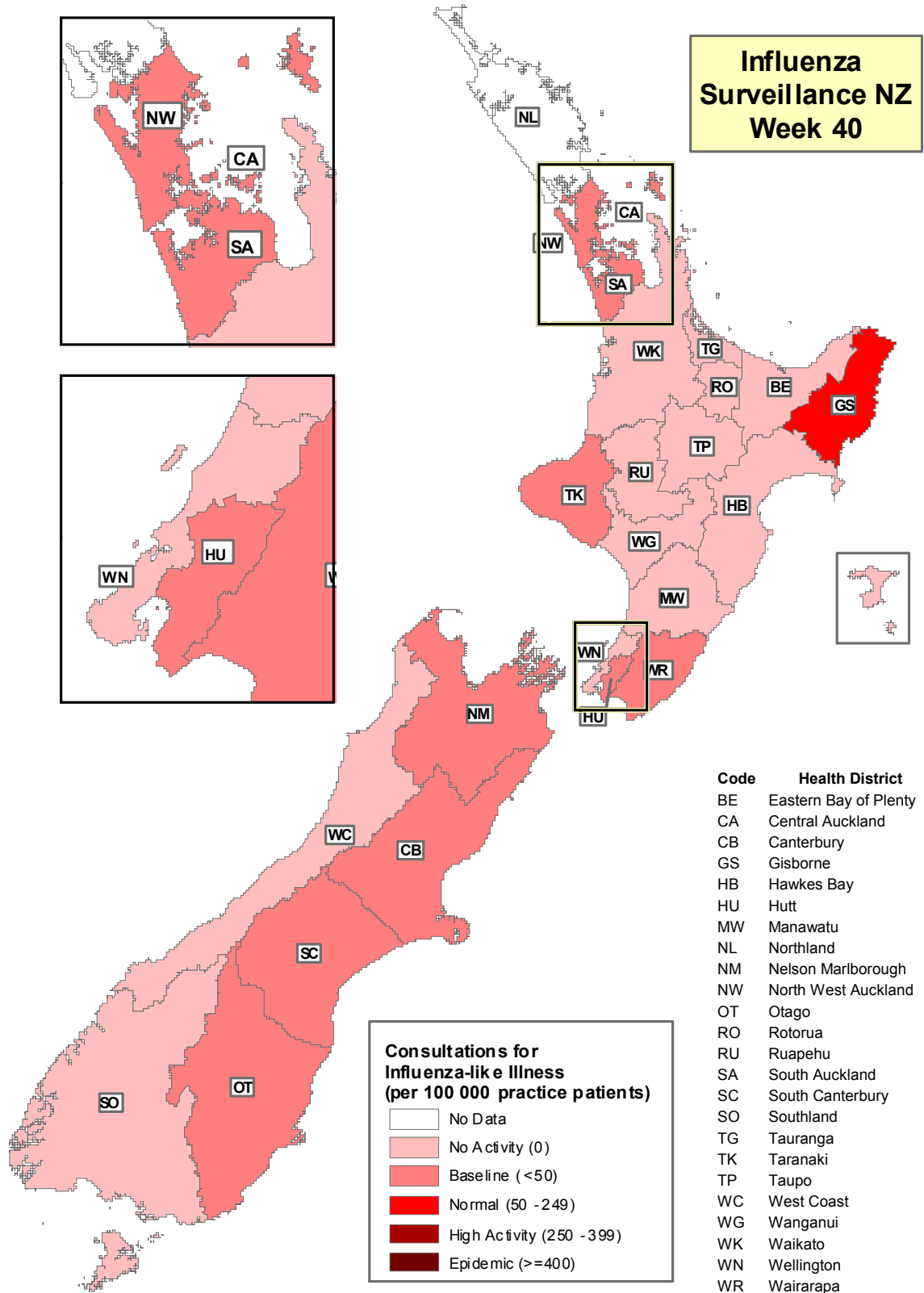


Figure 4 illustrates consultation rates for influenza-like illness mapped by health district for week 40, 2008.

Figure 4



Compiled by: Liza Lopez  
 Population and Environmental Health  
 ESR Kenepuru Science Centre  
 PO Box 50 348  
 PORIRUA

phone: 04 914-0647  
 fax: 04 914-0770  
 email: liza.lopez@esr.cri.nz