

INFLUENZA WEEKLY UPDATE

2009/19: 4 – 10 May 2009

In the past week, a total of 88 consultations for influenza-like illness were reported from 77 general practices in all 24 health districts. This gives a weekly consultation rate of 25.7 per 100 000 patient population.

The graph below compares the consultation rates for influenza-like illness for each health district over the past week. Hawke's Bay had the highest consultation rate (71.4 per 100 000, 14 cases), followed by Wellington (68.9 per 100 000, 11 cases) and Taupo (43.3 per 100 000, 1 case).

Figure 1: Weekly consultation rates for influenza-like illness by health district week ending 10 May 2009

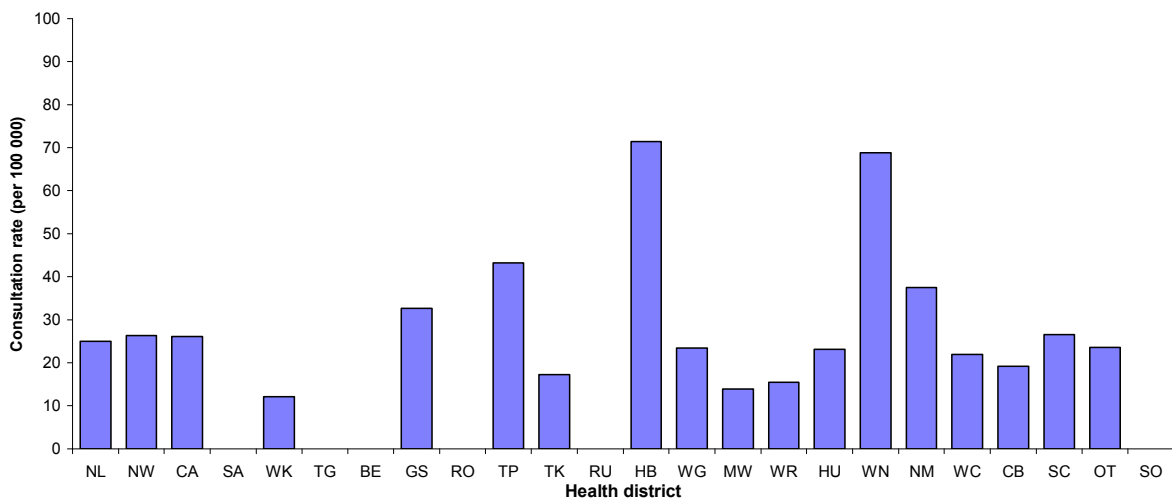


Table 1. Health District Codes and Description

Code	Description	Code	Description
NL	Northland	HB	Hawke's Bay
NW	North West Auckland	WG	Wanganui
CA	Central Auckland	MW	Manawatu
SA	South Auckland	WR	Wairarapa
WK	Waikato	HU	Hutt
TG	Tauranga	WN	Wellington
BE	Eastern Bay of Plenty	NM	Nelson-Marlborough
GS	Gisborne	WC	West Coast
RO	Rotorua	CB	Canterbury
TP	Taupo	SC	South Canterbury
TK	Taranaki	OT	Otago
RU	Ruapehu	SO	Southland

Thirty-two swabs were sent from the sentinel surveillance in the past week. Fifty-three swabs were received by the virology laboratories. Of these, seven influenza viruses were identified, four as Influenza AH1 and three as Influenza AH3. The distribution by health district is shown in Table 1.

Table 1: Sentinel influenza viruses by Health District

Antigenic Strain	CA	MW	WN	CB	Total
AH1	0	1	2	1	4
AH3	2	0	1	0	3
Total	2	1	3	1	7

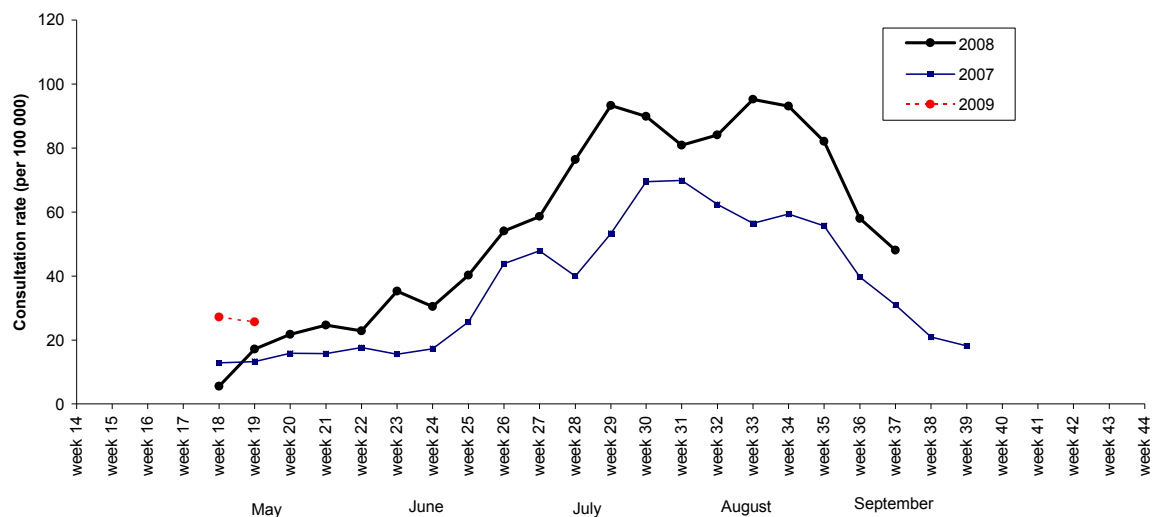
In addition, six influenza viruses were reported this week from the laboratory-based (non-sentinel) surveillance, two as Influenza AH1, two as Influenza A (yet to be sub-typed), and two as Influenza B. The distribution by health district is shown in Table 2.

Table 2: Laboratory-based influenza viruses by Health District

Antigenic Strain	CA	WK	Total
AH1	0	2	2
A	2	0	2
B	2	0	2
Total	4	2	6

Figure 2 shows the weekly national consultation rates for 2007 and 2008 seasons, and 2009 so far. The current rate of influenza is higher than at the same time last year.

Figure 2: Weekly consultation rates for influenza-like illness in New Zealand, 2007, 2008 and 2009



Non Seasonal Influenza A (H1N1) Update in New Zealand

- No new cases have been reported to WHO, however two previously probable cases have been confirmed bringing the total of laboratory confirmed cases to nine, with no deaths.
- A further ten probable cases are awaiting confirmation.

For further information please refer to the Ministry of Health's website
<http://www.moh.govt.nz/influenza-a-h1n1>

The 2008 Influenza annual report can be found at
<http://www.surv.esr.cri.nz/virology/virology.php>