

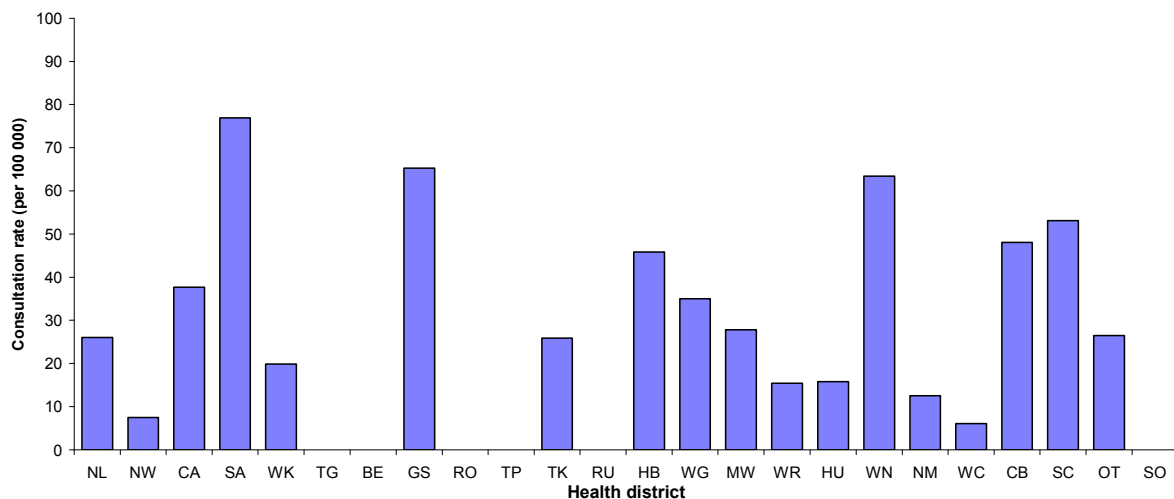
# INFLUENZA WEEKLY UPDATE

2009/20: 11 – 17 May 2009

In the past week, a total of 107 consultations for influenza-like illness were reported from 84 general practices in all 24 health districts. This gives a weekly consultation rate of 29.5 per 100 000 patient population.

The graph below compares the consultation rates for influenza-like illness for each health district over the past week. South Auckland had the highest consultation rate (76.9 per 100 000, 1 case), followed by Gisborne (65.3 per 100 000, 2 cases) and Wellington (63.4 per 100 000, 17 cases).

*Figure 1: Weekly consultation rates for influenza-like illness by health district week ending 17 May 2009*



Thirty-nine swabs were sent from the sentinel surveillance in the past week. Fifty-five swabs were received by the virology laboratories. Of these, two influenza viruses were identified<sup>1</sup>, one as seasonal AH1N1 by PCR from Wanganui and one seasonal AH3N2 by PCR virus from Tauranga.

No influenza viruses were reported from the laboratory-based (non-sentinel) surveillance reported this week.

Figure 2 shows the cumulative total of influenza viruses confirmed (sentinel and laboratory-based surveillance) to the end of week 20, 17 May 2009. A total of 52 influenza viruses were identified: A (yet to be sub-typed) (16), seasonal AH1N1 by PCR (15), seasonal AH3N2 by PCR (11), novel influenza AH1N1 swine-lineage virus (9), and B (not antigenically typed) (1). The neuraminidase N1 sequencing was performed for three seasonal influenza AH1N1 viruses from three regions (one each from Wellington, Tananaki and Auckland). These three

<sup>1</sup> Data based on report date not date of collection.

viruses all had histidine-to-tyrosine mutation at the codon of 275 in N1 numbering. The H275Y mutation is known to confer resistance to Oseltamivir.

**Figure 2: Cumulative laboratory-confirmed isolates by health district to 17 May 2009**

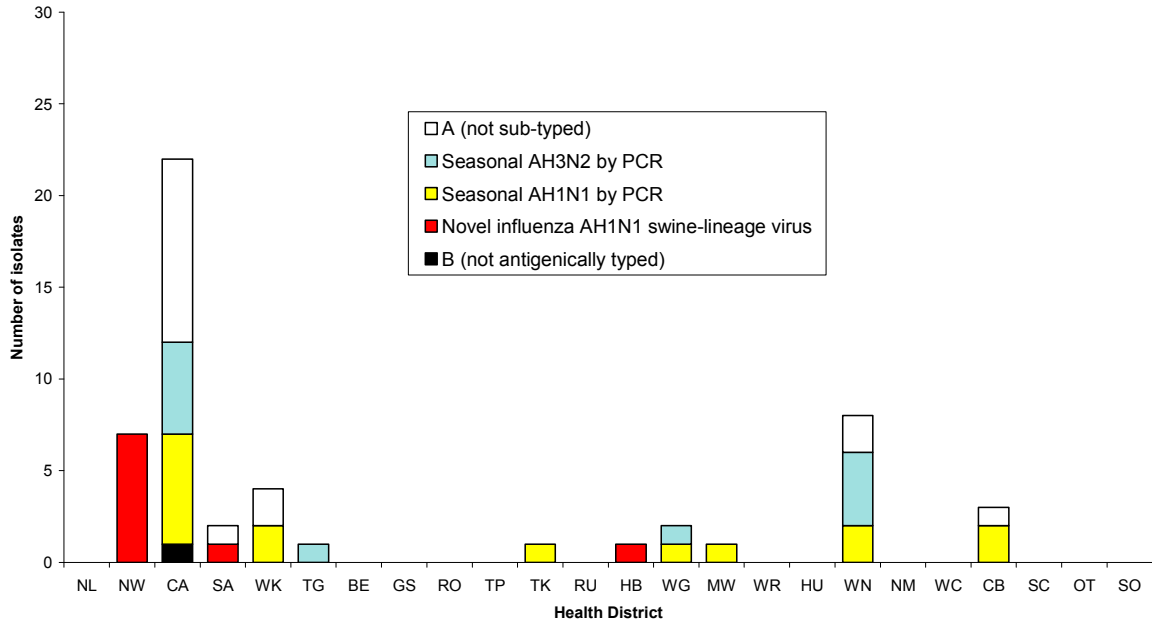


Figure 3 shows the weekly national consultation rates for 2007 and 2008 seasons, and 2009 so far. The current rate of influenza is higher than at the same time last year.

**Figure 3: Weekly consultation rates for influenza-like illness in New Zealand, 2007, 2008 and 2009**

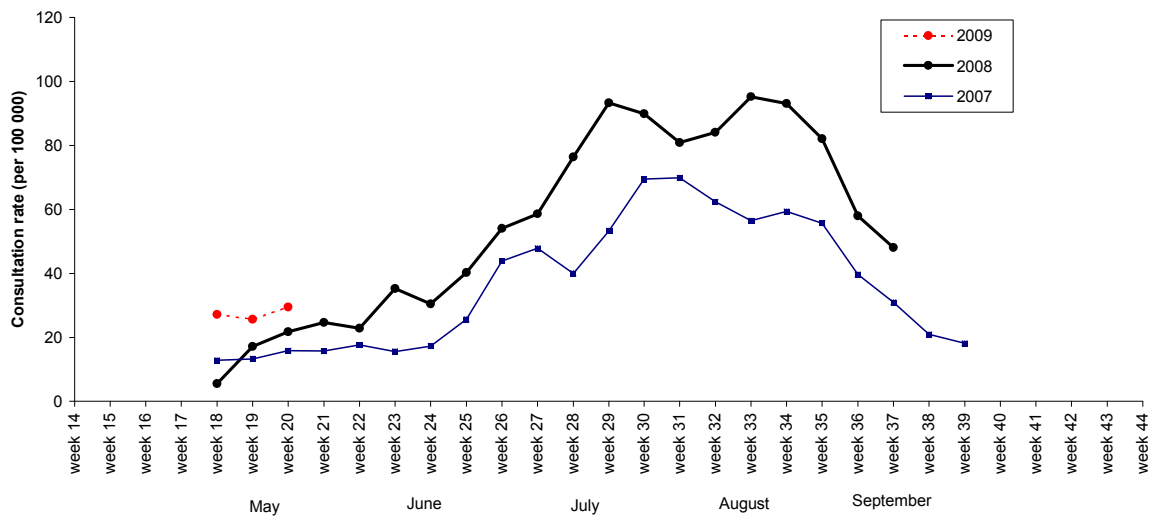
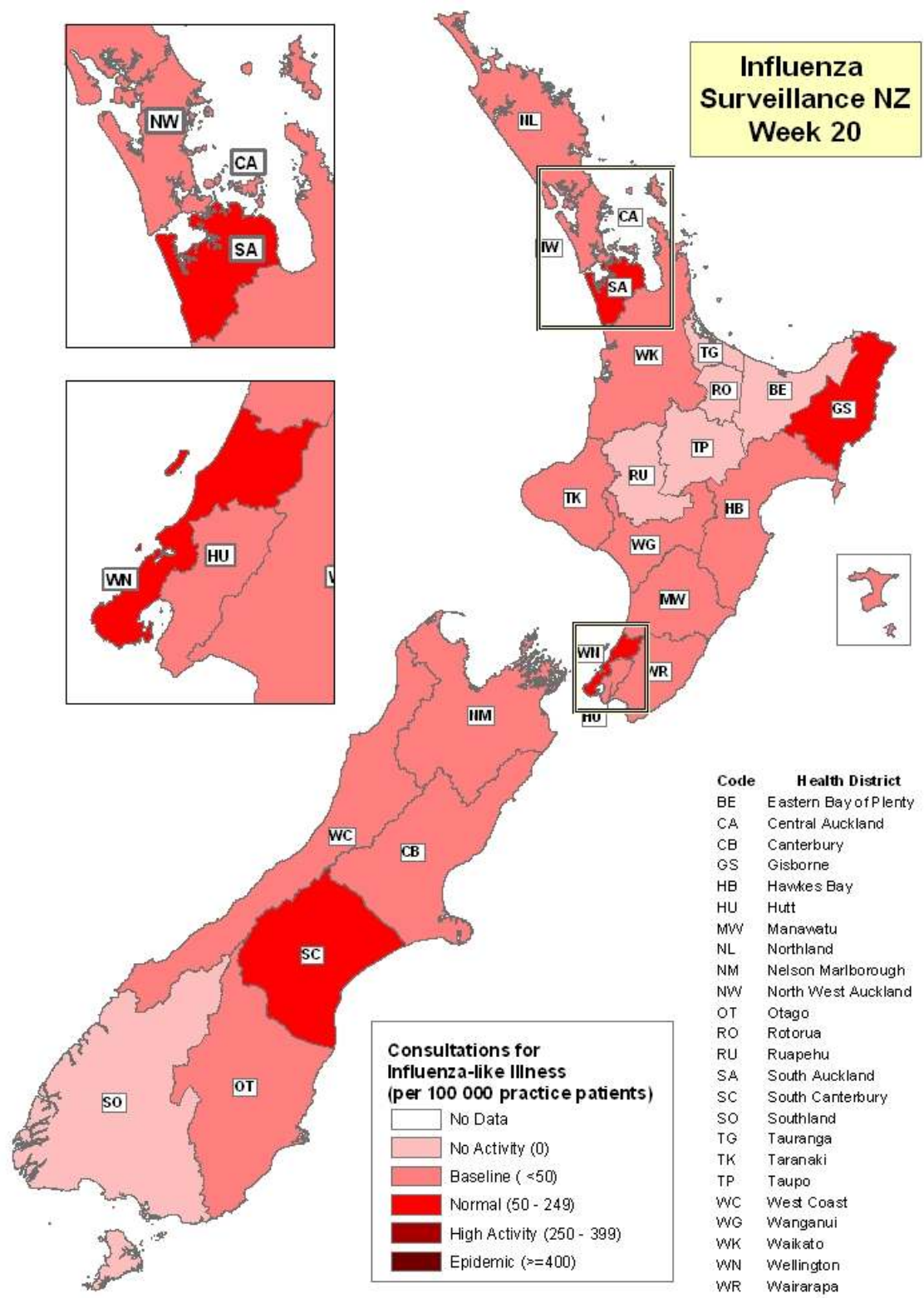


Figure 4 illustrates consultation rates for influenza-like illness mapped by health district for week 20, 2009.



## **Non Seasonal Influenza A (H1N1) swine lineage virus Update in New Zealand**

Nine cases of non seasonal influenza A (H1N1) swine lineage viruses have been confirmed in New Zealand. A further 10 probable cases are awaiting confirmation. No deaths were reported.

For further information please refer to the Ministry of Health's website  
<http://www.moh.govt.nz/influenza-a-h1n1>

The 2008 Influenza annual report can be found at  
<http://www.surv.esr.cri.nz/virology/virology.php>

---

Compiled by:  
Liza Lopez  
Population and Environmental Health  
ESR Kenepuru Science Centre  
PO Box 50 348, PORIRUA  
Tel : 04 914 0647 Fax: 04 978 6690 Email:liza.lopez@esr.cri.nz

Dr. Sue Huang  
WHO National Influenza Centre  
ESR Wallaceville Science Centre  
PO Box 40158, Upper Hutt