

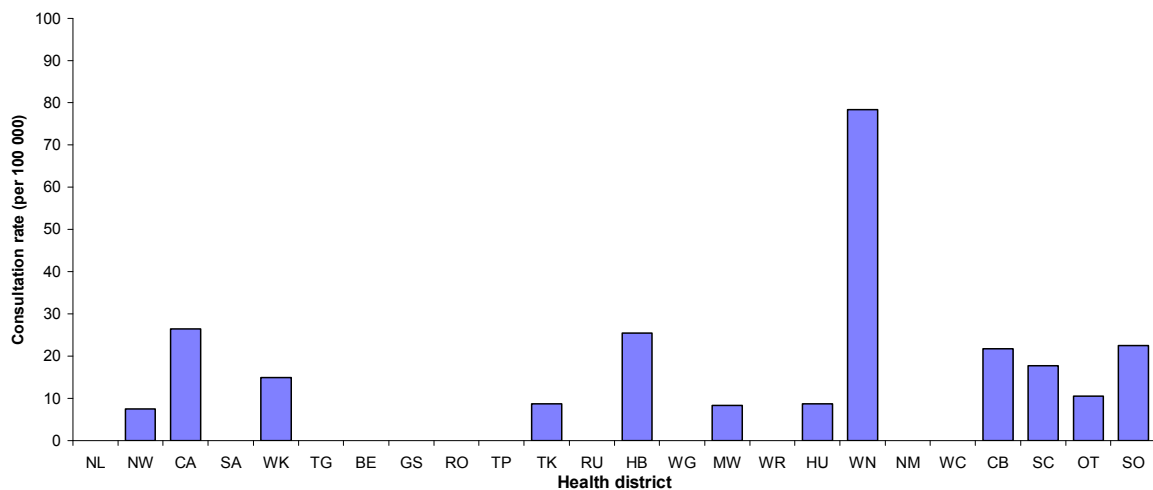
INFLUENZA WEEKLY UPDATE

2009/21: 18 – 24 May 2009

In the past week, a total of 63 consultations for influenza-like illness were reported from 89 general practices in all 24 health districts. This gives a weekly consultation rate of 16.3 per 100 000 patient population.

The graph below compares the consultation rates for influenza-like illness for each health district over the past week. Wellington had the highest consultation rate (78.4 per 100 000, 21 cases), followed by Central Auckland (26.4 per 100 000, 9 cases) and Southland (22.5 per 100 000, 2 cases).

Figure 1: Weekly consultation rates for influenza-like illness by health district week ending 24 May 2009



Twenty-seven swabs were sent from the sentinel surveillance in the past week. Twenty-nine swabs were received by the virology laboratories. Of these, one influenza B virus (not antigenically typed) was identified¹ from the Hutt.

In addition, four influenza viruses were reported this week from the laboratory-based (non-sentinel) surveillance: seasonal AH1N1 by PCR (2) from Central Auckland and seasonal AH3N2 by PCR (2) from Waikato.

Figure 2 shows the cumulative total of influenza viruses confirmed (sentinel and laboratory-based surveillance) to the end of week 21, 24 May 2009. A total of 57 influenza viruses were identified: A (yet to be sub-typed) (17), seasonal AH1N1 (15), seasonal AH3N2 (12), novel influenza AH1N1 swine-lineage virus (9), A/Brisbane/59/2007 (H1N1)-like virus (2), and B (not antigenically typed) (2). So far, 12 seasonal AH1N1 viruses have been tested for the H275Y mutation (histidine-to-tyrosine mutation at the codon of 275 in N1 numbering) which is known to confer resistance to Oseltamivir. All 12 viruses had the H275Y mutation.

¹ Data based on report date not date of collection.

Figure 2

Figure 2: Cumulative laboratory-confirmed isolates by health district to 24 May 2009

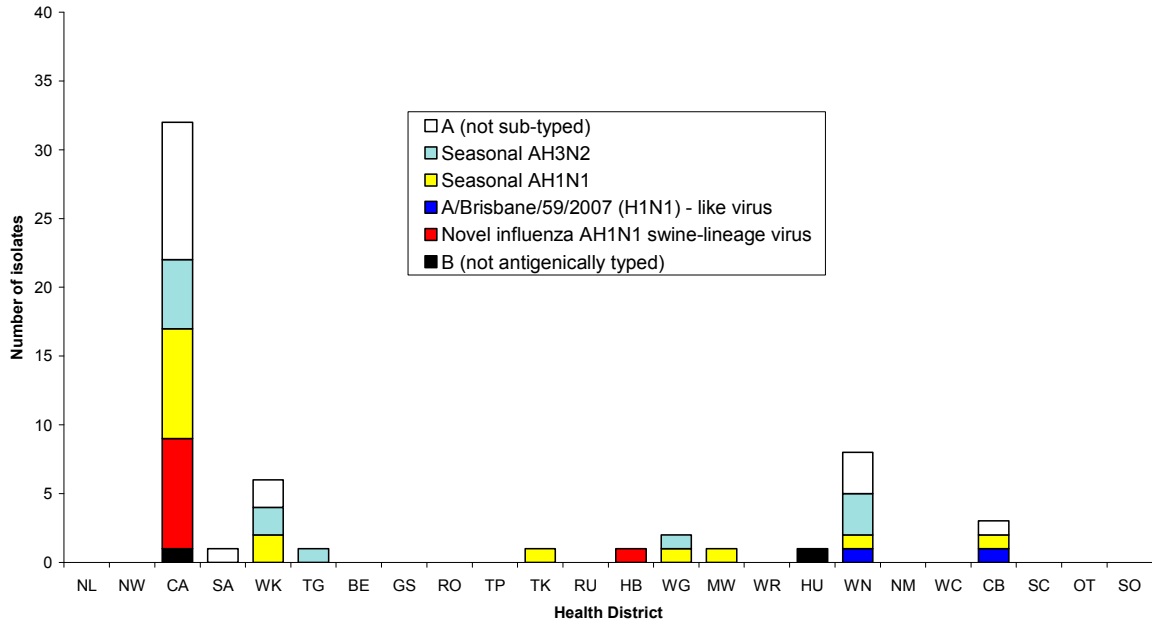


Figure 3 shows the weekly national consultation rates for 2007 and 2008 seasons, and 2009 so far. The current rate of influenza is lower than at the same time last year.

Figure 3: Weekly consultation rates for influenza-like illness in New Zealand, 2007, 2008 and 2009

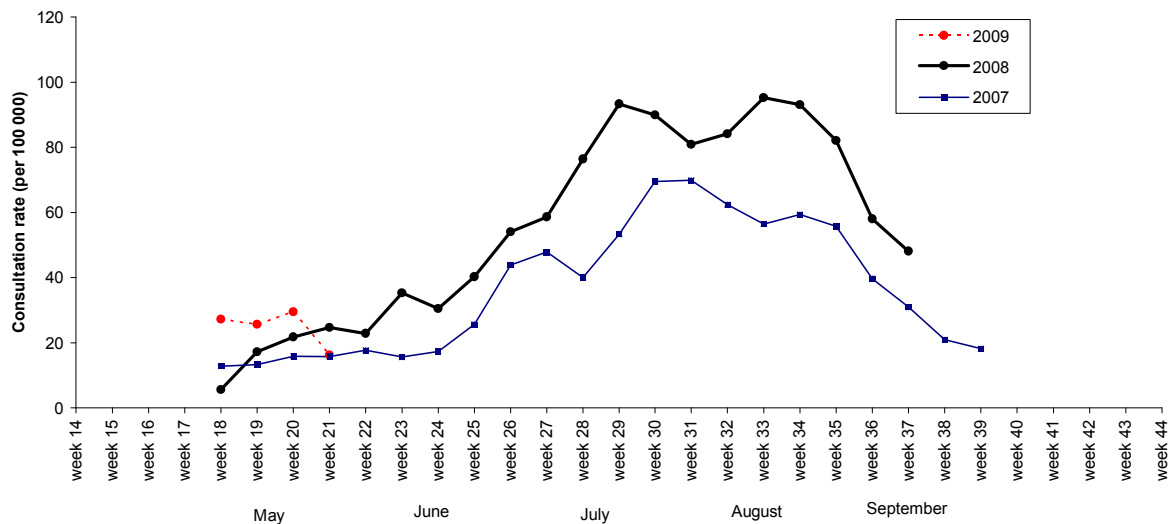
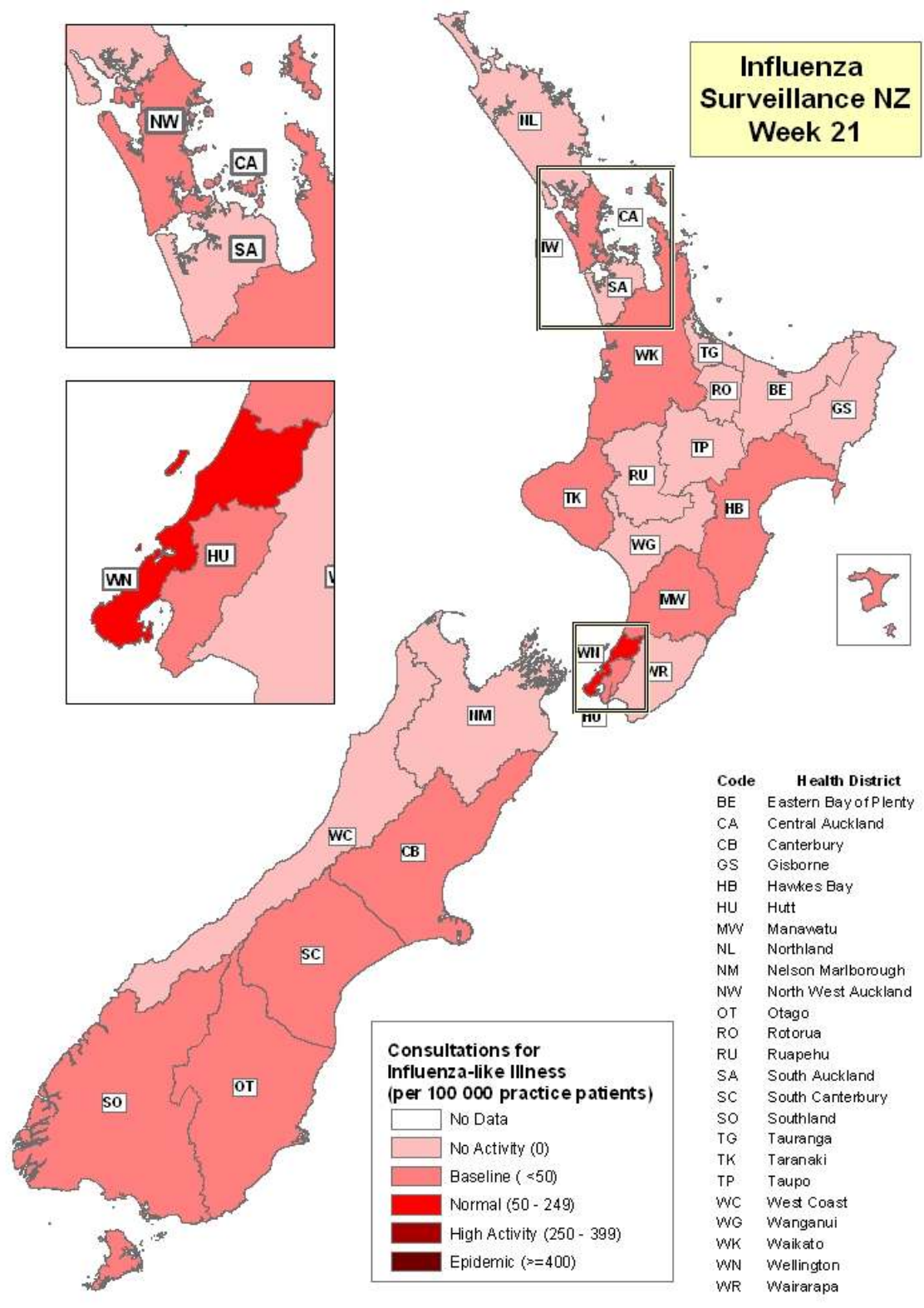


Figure 4 illustrates consultation rates for influenza-like illness mapped by health district for week 21, 2009.



Non Seasonal Influenza A (H1N1) swine lineage virus Update in New Zealand

Nine cases of non seasonal influenza A (H1N1) swine lineage viruses have been confirmed in New Zealand. A further 11 probable cases are awaiting confirmation. No deaths were reported.

For further information please refer to the Ministry of Health's website
<http://www.moh.govt.nz/influenza-a-h1n1>

The 2008 Influenza annual report can be found at
<http://www.surv.esr.cri.nz/virology/virology.php>

Compiled by:
Liza Lopez
Population and Environmental Health
ESR Kenepuru Science Centre
PO Box 50 348, PORIRUA
Tel : 04 914 0647 Fax: 04 978 6690 Email:liza.lopez@esr.cri.nz

Dr. Sue Huang
WHO National Influenza Centre
ESR Wallaceville Science Centre
PO Box 40158, Upper Hutt