

# INFLUENZA WEEKLY UPDATE

2011/20: 16-22 May 2011

The national influenza surveillance system in New Zealand is an essential public health component for assessing and implementing strategies to control influenza. This report summarises the data collected from sentinel general practice (GP) surveillance and non-sentinel surveillance for week 20 (16-22 May 2011).

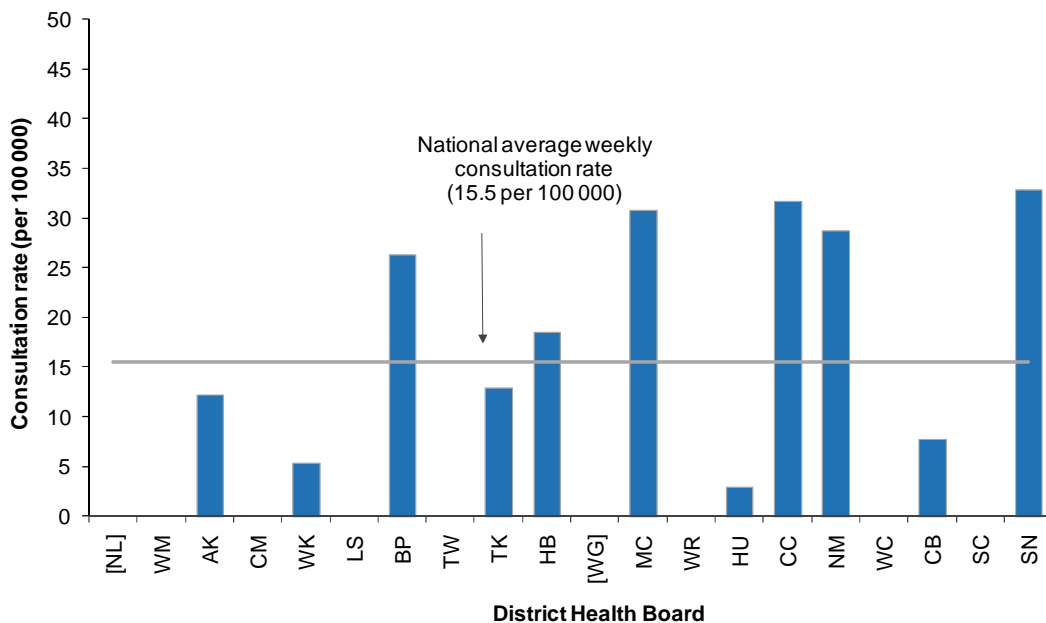
## SUMMARY OF THIS REPORT:

Influenza-like illness (ILI) through sentinel surveillance was reported from 18 out of 20 District Health Boards (DHB) with a national consultation rate of 15.5 per 100 000 (57 ILI consultations). Eighty-two swabs were received from sentinel and non-sentinel surveillance. One B virus from Auckland DHB was identified from sentinel surveillance.

In the past week, a total of 57 consultations for influenza-like illness were reported from 81 general practices in 18 out of 20 DHBs. This gives a weekly consultation rate of 15.5 per 100 000 patient population.

The graph below compares the consultation rates for influenza-like illness for each DHB over the past week. Southern DHB (32.9 per 100 000, 17 cases) had the highest consultation rate, followed by Capital and Coast (31.8 per 100 000, 7 cases) and MidCentral (30.9 per 100 000, 9 cases).

**Figure 1: Weekly consultation rates for influenza-like illness by DHB week ending 22 May 2011**



[ ] No data for the week.

Eighty-two swabs were received by the virology laboratories from sentinel surveillance (11) and the non-sentinel surveillance (71). One B virus from Auckland DHB was identified from sentinel surveillance.

Figure 2 shows the cumulative total of influenza viruses confirmed (sentinel and non-sentinel surveillance) from week 1 to the end of week 20 (22 May 2011). A total of 46 influenza viruses were identified: pandemic (H1N1) 09 (23) including two A/California/7/2009 (H1N1) - like virus, A (H3N2) (8) including one A/Perth/16/2009 (H3N2) – like virus, B (9) including two of B/Brisbane/60/2008 - like viruses, A (not sub-typed) (6). The current circulating influenza strains are all covered by the 2011 influenza vaccine.

**Figure 2: Cumulative laboratory-confirmed viruses by DHB from week 1 to week 20, 22 May 2011**

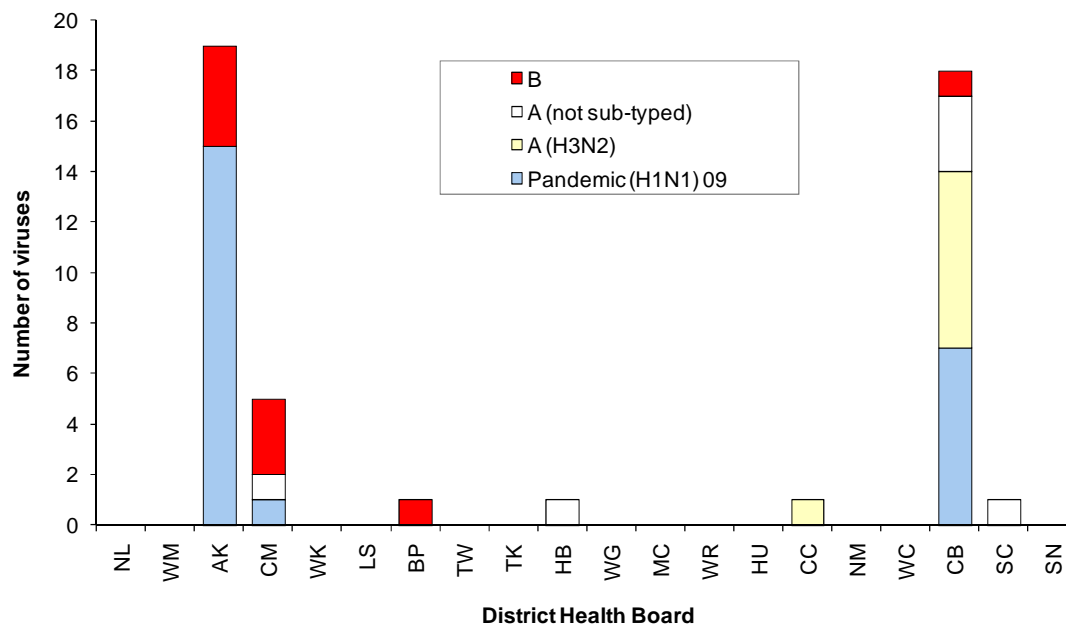
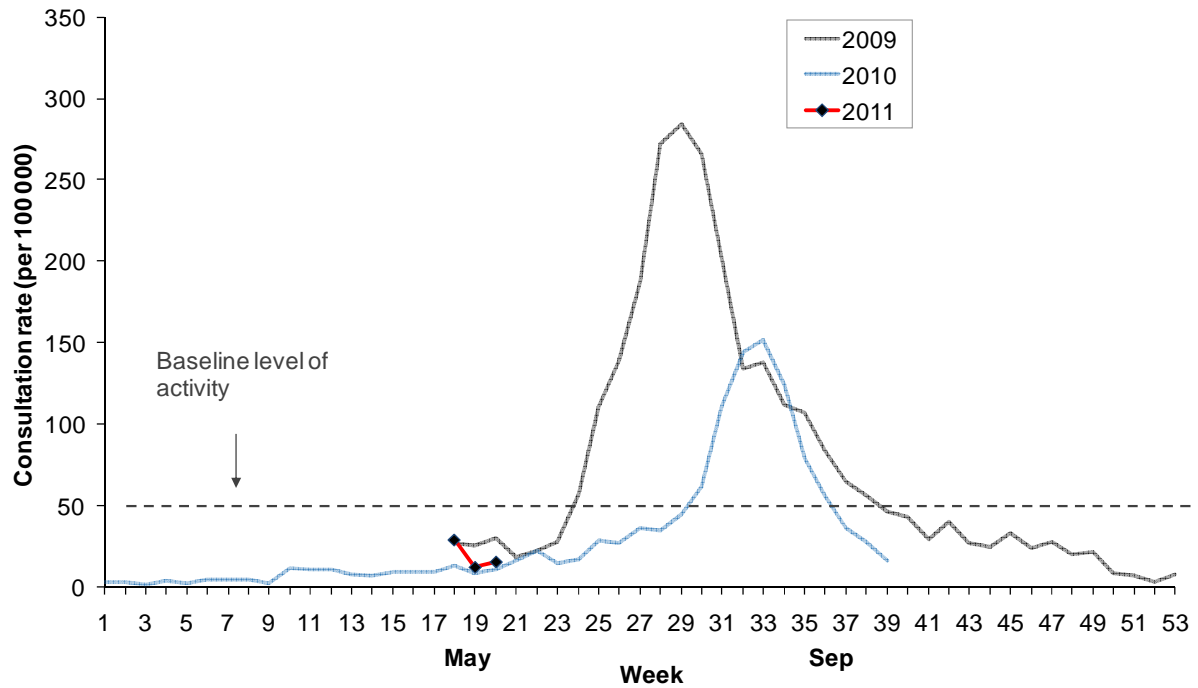


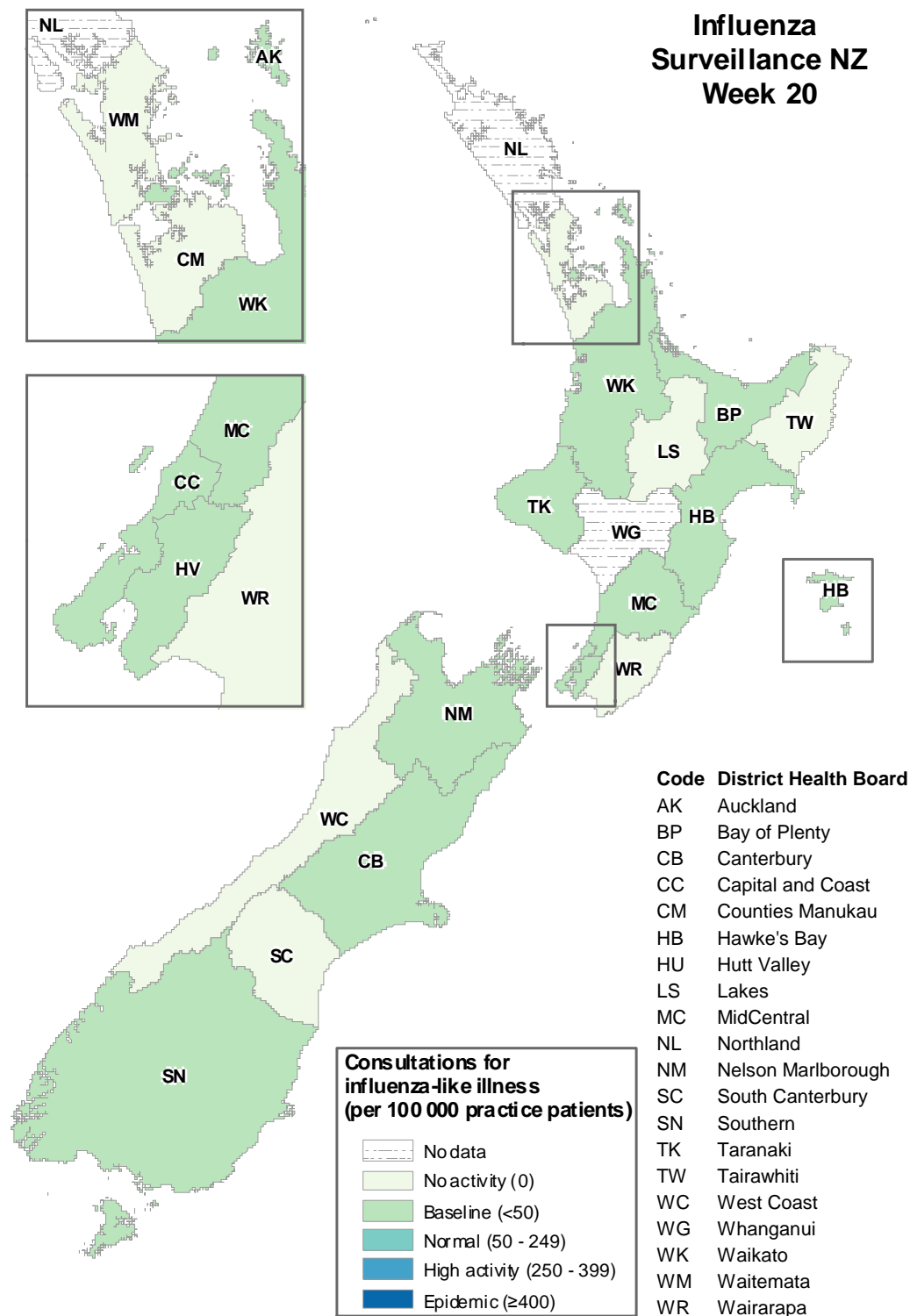
Figure 3 shows the weekly national consultation rates for 2009, 2010 seasons, and 2011 so far. The current rate of influenza-like illness is below the baseline.

**Figure 3: Weekly consultation rates for influenza-like illness in New Zealand, 2009, 2010 and 2011**



\* A weekly rate <50 ILI consultations per 100 000 patient population is considered baseline activity. A rate of 50–249 is considered indicative of normal seasonal influenza activity, and a rate of 250–399 indicative of higher than expected influenza activity. A rate >400 ILI consultations per 100 000 patient population indicates an epidemic level of influenza activity.

Figure 4: Consultation rates for influenza-like illness mapped by DHB for week 20, 2011



Compiled by:  
 Liza Lopez  
 Health Intelligence Team  
 ESR Kenepuru Science Centre  
 PO Box 50 348, PORIRUA  
 Tel : 04 914 0647 Fax: 04 978 6690 Email:liza.lopez@esr.cri.nz

Dr. Sue Huang  
 WHO National Influenza Centre  
 ESR Wallaceville Science Centre  
 PO Box 40158, Upper Hutt