

INFLUENZA WEEKLY UPDATE

2011/34: 22 – 28 August 2011

The national influenza surveillance system in New Zealand is an essential public health component for assessing and implementing strategies to control influenza. This report summarises the data collected from sentinel general practice (GP) surveillance and non-sentinel surveillance for week 34 (22 – 28 August 2011).

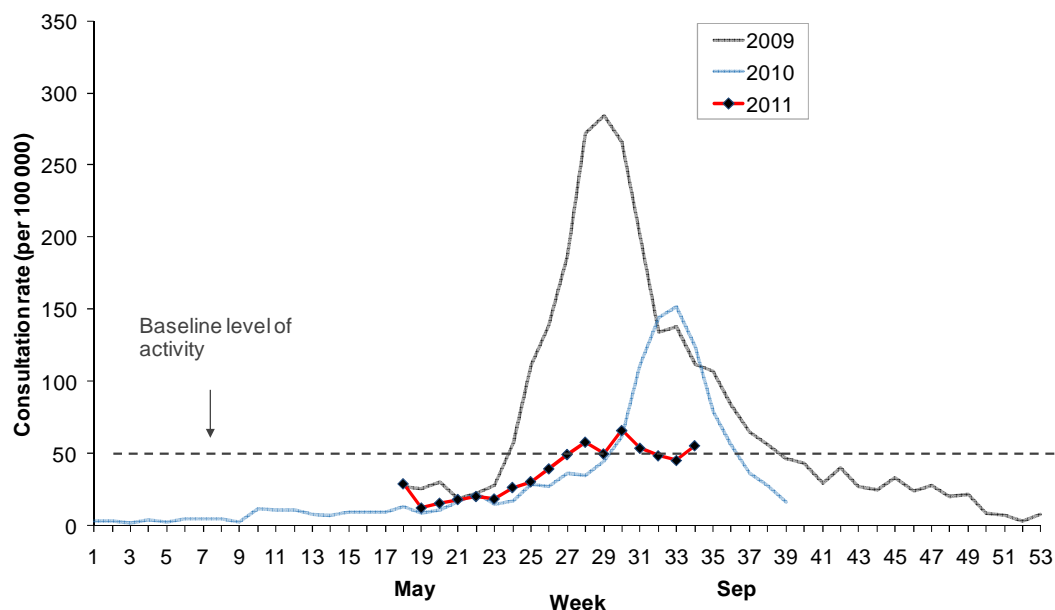
SUMMARY OF THIS REPORT:

Influenza-like illness (ILI) through sentinel surveillance was reported in 19 out of 20 District Health Boards (DHB) with a national consultation rate of 55.5 per 100 000 (210 ILI consultations). Three hundred and sixty-three swabs were received from sentinel (43) and non-sentinel surveillance (320). Ninety-two viruses were identified from sentinel (30) and non-sentinel surveillance (62): B (41), A (not sub-typed) (25), A(H3N2) (19) and pandemic A(H1N1) 09 (7).

INFLUENZA-LIKE ILLNESS SURVEILLANCE

In the past week, a total of 210 consultations for influenza-like illness were reported from 77 general practices in 19 out of 20 DHBs. This gives a weekly consultation rate of 55.5 per 100 000 patient population. Figure 1 shows the weekly national consultation rates for 2009, 2010 seasons, and 2011 so far. The current rate of influenza-like illness is above the baseline.

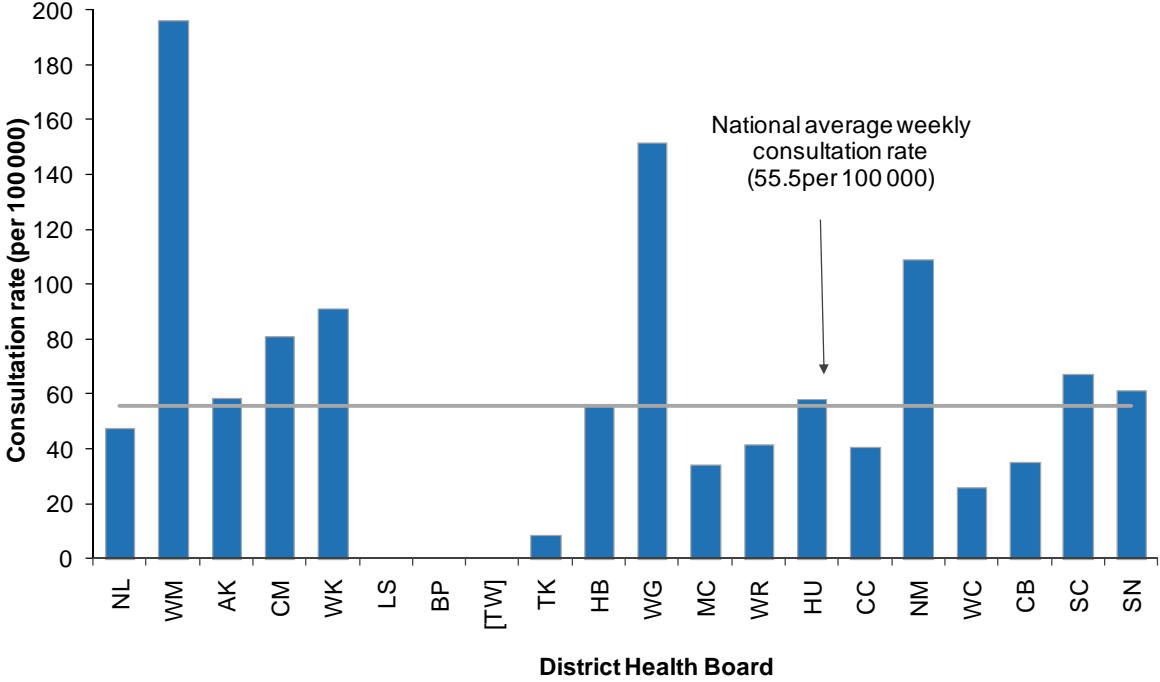
Figure 1: Weekly consultation rates for influenza-like illness in New Zealand, 2009, 2010 and 2011



* A weekly rate <50 ILI consultations per 100 000 patient population is considered baseline activity. A rate of 50–249 is considered indicative of normal seasonal influenza activity, and a rate of 250–399 indicative of higher than expected influenza activity. A rate >400 ILI consultations per 100 000 patient population indicates an epidemic level of influenza activity.

Figure 2 compares the consultation rates for influenza-like illness for each DHB over the past week. Waitemata DHB (196.1 per 100 000, 19 cases) had the highest consultation rate, followed by Whanganui (151.8 per 100 000, 13 cases) and Nelson Marlborough (108.8 per 100 000, 19 cases).

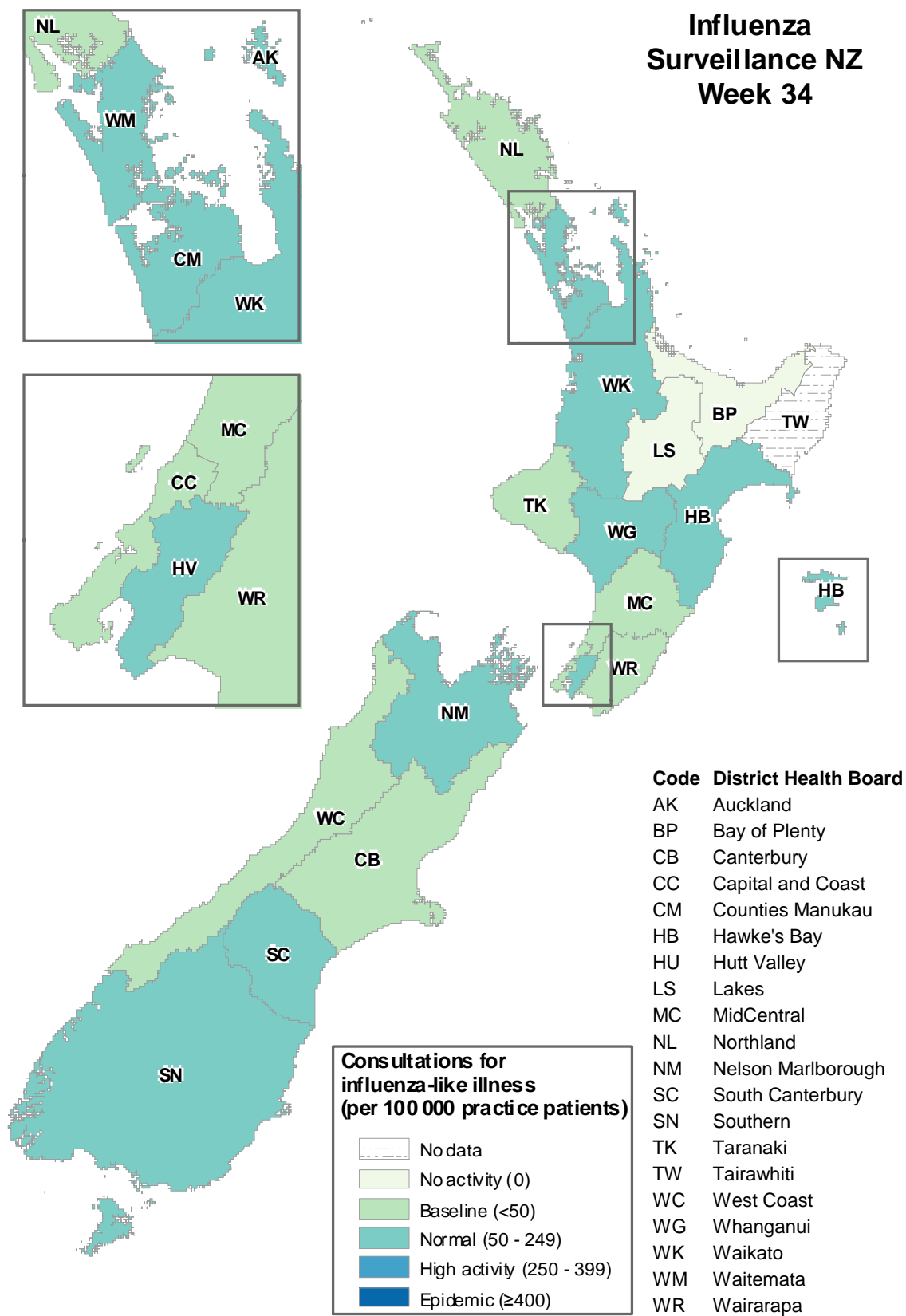
Figure 2: Weekly consultation rates for influenza-like illness by DHB week ending 28 August 2011



[] No data for the week

Figure 3 maps the consultation rates for influenza-like illness by DHB.

Figure 3: Consultation rates for influenza-like illness mapped by DHB for week 34, 2011



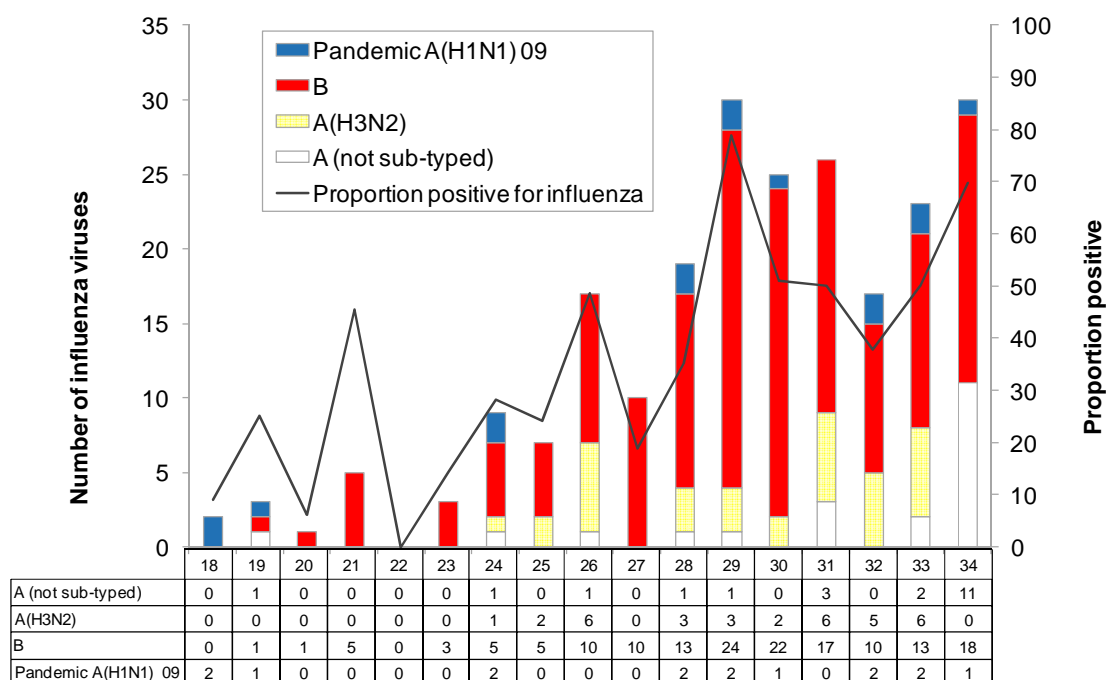
VIROLOGICAL SURVEILLANCE

A total of 43 swabs were received by virology laboratories from sentinel surveillance. Of these, 30 viruses were identified: B (18), A (not sub-typed) (11) and pandemic A(H1N1) 09 (1). The distribution by DHB is shown in Table 1.

Table 1: Influenza viruses from sentinel surveillance for week 34 by DHB

Antigenic Strain	NL	AK	WK	BP	TK	HB	MC	HU	CC	NM	CB	SC	SN	Total
A (not sub-typed)	1	0	0	1	1	1	4	0	0	1	0	1	1	11
B	0	3	1	0	0	2	2	1	3	4	2	0	0	18
Pandemic A(H1N1) 09	0	0	0	0	0	0	0	0	0	0	1	0	0	1
Total	1	3	1	1	1	3	6	1	3	5	3	1	1	30

Figure 4: Total influenza viruses from sentinel surveillance by type and week reported, weeks 18–34 and the total percentage positive from the swabs received



In addition, 320 swabs were received by virology laboratories from non-sentinel surveillance. Of these, 62 viruses were identified: B (23), A(H3N2) (19), A (not sub-typed) (14) and pandemic A(H1N1) 09 (6) (Figure 5). The distribution by DHB is shown in Table 2.

Table 2: Influenza viruses from non-sentinel surveillance for week 34 by DHB

Antigenic Strain	WM	AK	CM	WK	BP	LS	HB	CC	WC	CB	SN	Total
A (not sub-typed)	0	3	3	2	0	0	0	1	0	4	1	14
A(H3N2)	0	1	5	2	0	0	1	3	0	6	1	19
B	1	3	1	5	2	2	0	4	0	5	0	23
Pandemic A(H1N1) 09	0	0	0	0	0	0	0	1	1	4	0	6
Total	1	7	9	9	2	2	1	9	1	19	2	62

Figure 5: Total influenza viruses from non-sentinel surveillance by type and week reported, weeks 18–34 and the total percentage positive from the swabs received

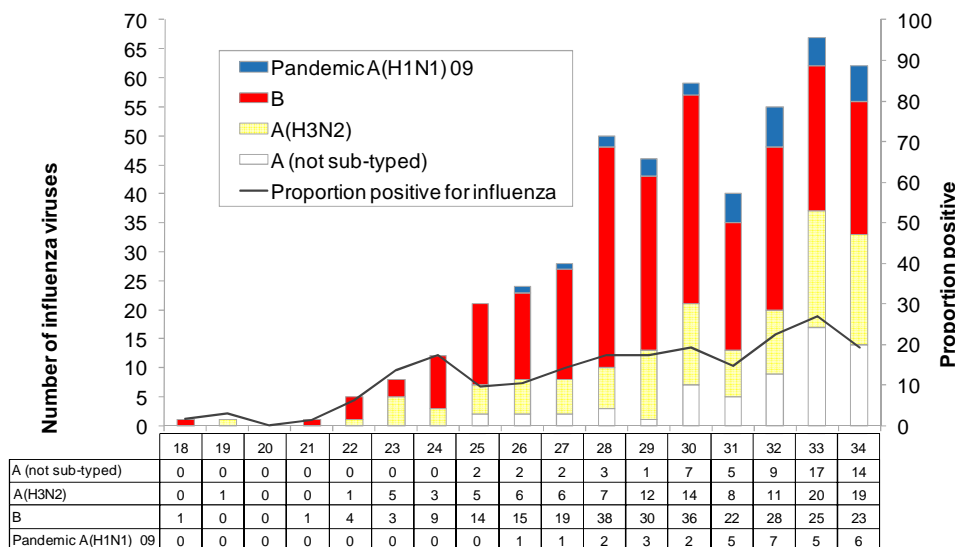


Figure 6 shows the cumulative total of influenza viruses confirmed (sentinel and non-sentinel surveillance) from week 1 to the end of week 34 (28 August 2011). A total of 745 influenza viruses were identified: influenza B (431) including 168 of B/Brisbane/60/2008 - like viruses and three B/Florida/4/2006 - like virus, pandemic (H1N1) 09 (68) including 10 A/California/7/2009 (H1N1) - like virus, A (H3N2) (159) including 53 A/Perth/16/2009 (H3N2) - like virus, and A (not sub-typed) (87). The major circulating influenza strains (B/Brisbane/60/2008 - like, A/California/7/2009 (H1N1) - like and A/Perth/16/2009 (H3N2) - like strains) are covered by the 2011 influenza vaccine.

Figure 6: Cumulative laboratory-confirmed viruses by DHB from week 1 to week 34, 28 August 2011

