

# INFLUENZA WEEKLY UPDATE

2011/37: 12 – 18 September 2011

The national influenza surveillance system in New Zealand is an essential public health tool for assessing incidence and trends as well as implementing strategies to control influenza. This report summarises the data collected from sentinel general practice (GP) surveillance and non-sentinel surveillance for week 37 (12 – 18 September 2011).

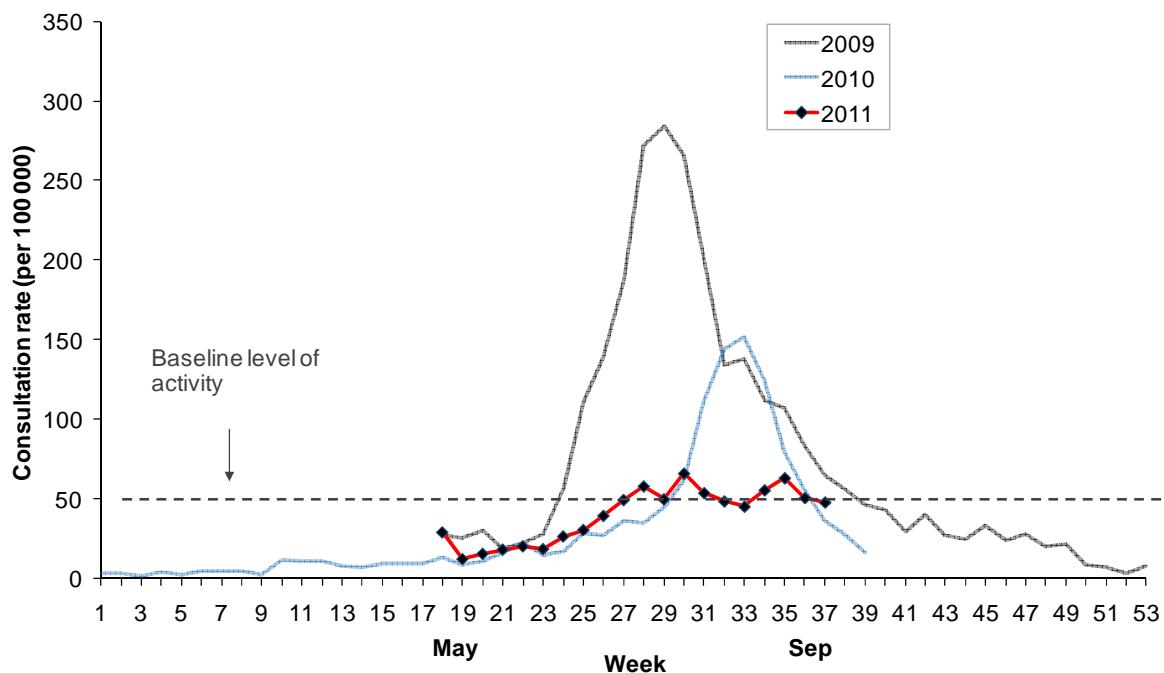
## SUMMARY OF THIS REPORT:

Influenza-like illness (ILI) through sentinel surveillance was reported in 19 of 20 District Health Boards (DHB) giving an overall national consultation rate of 47.9 per 100 000 (178 ILI consultations). Three hundred and seventy-four swabs were received from sentinel (50) and non-sentinel surveillance (324). Ninety-one viruses were identified from sentinel (12) and non-sentinel surveillance (79). These were: A(H3N2) (36), B (27), A (not sub-typed) (22) and pandemic A(H1N1) 09 (6).

## INFLUENZA-LIKE ILLNESS SURVEILLANCE

In the past week, a total of 178 consultations for influenza-like illness were reported from 80 general practices in 19 of 20 DHBs. This gives a weekly national consultation rate of 47.9 per 100 000 patient population (lower than the consultation rate of 50.7 per 100 000 in week 36). Figure 1 shows the weekly national consultation rates for 2009, 2010 seasons, and 2011 so far. The current rate of influenza-like illness is below the baseline.

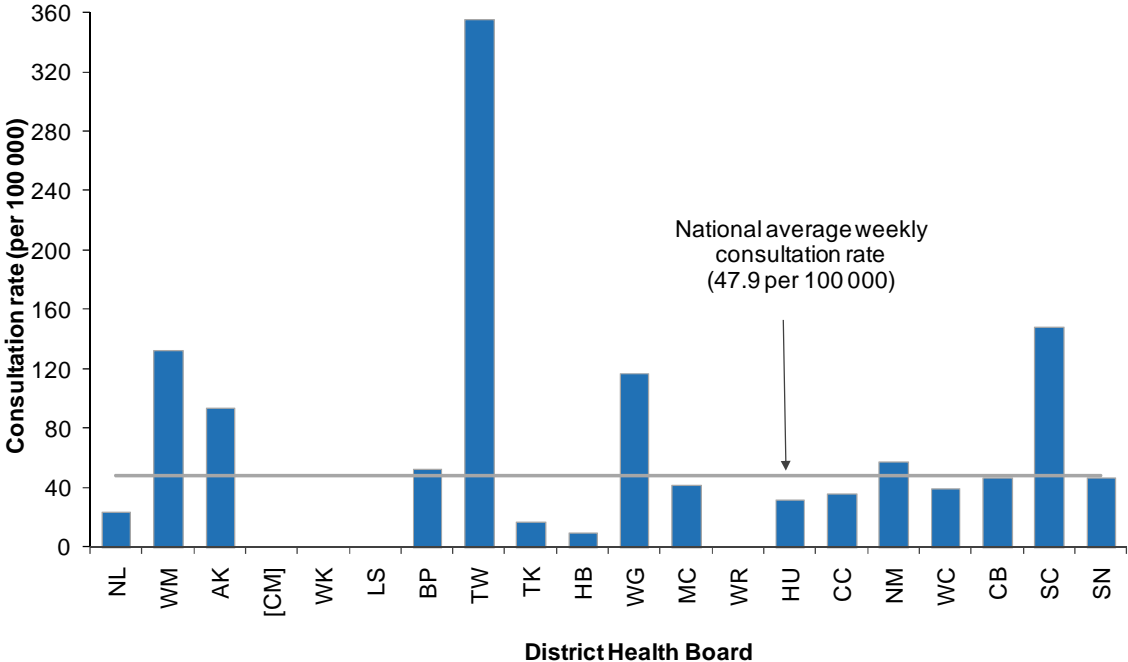
Figure 1: Weekly consultation rates for influenza-like illness in New Zealand, 2009, 2010 and 2011



\* A weekly rate <50 ILI consultations per 100 000 patient population is considered baseline activity. A rate of 50–249 is considered indicative of normal seasonal influenza activity, and a rate of 250–399 indicative of higher than expected influenza activity. A rate >400 ILI consultations per 100 000 patient population indicates an epidemic level of influenza activity.

Figure 2 compares the consultation rates for influenza-like illness for each DHB over the past week. Tairawhiti DHB (355.3 per 100 000, 11 cases) had the highest consultation rate, followed by South Canterbury (148.3 per 100 000, 11 cases) and Waitemata (132.9 per 100 000, 8 cases).

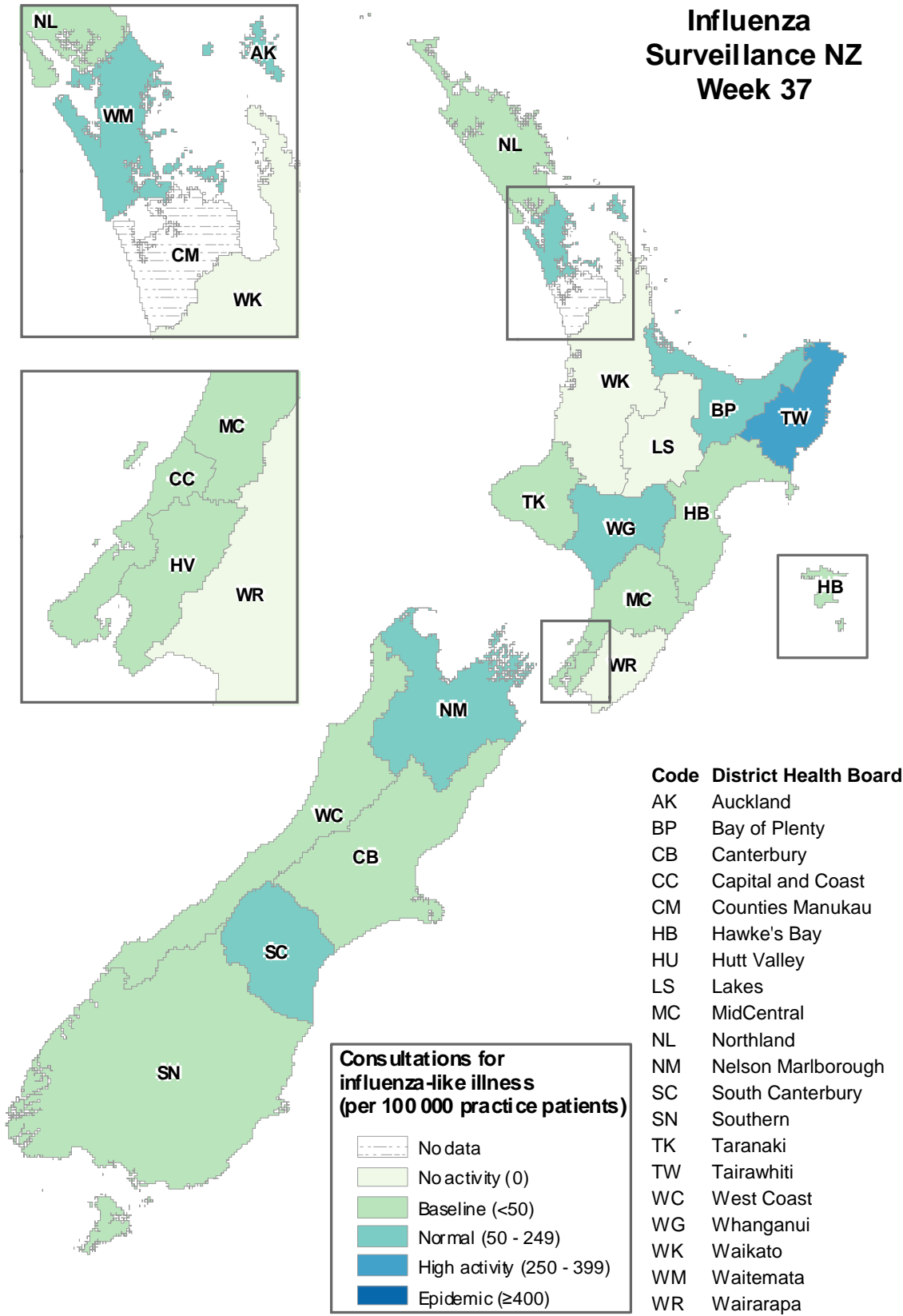
**Figure 2: Weekly consultation rates for influenza-like illness by DHB, week ending 18 September 2011**



[ ] No data for the week

Figure 3 maps the consultation rates for influenza-like illness by DHB.

**Figure 3: Consultation rates for influenza-like illness mapped by DHB for week 37, 2011**



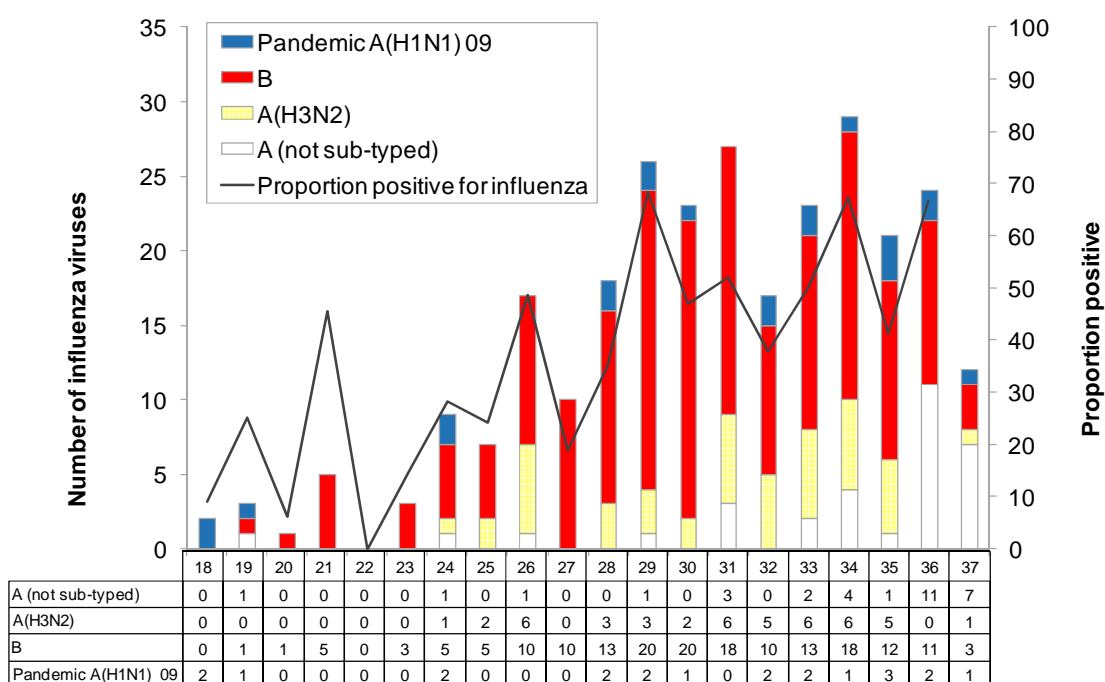
## VIROLOGICAL SURVEILLANCE

A total of 50 swabs were received by virology laboratories from sentinel surveillance. Of these, 12 viruses were identified: A (not sub-typed) (7), B (3), A(H3N2) (1) and pandemic A(H1N1) 09 (1). The distribution by DHB is shown in Table 1.

**Table 1: Influenza viruses from sentinel surveillance for week 37 by DHB**

Antigenic Strain	AK	WG	MC	HU	NM	CB	SN	Total
A (not sub-typed)	1	1	2	1	0	0	2	7
A(H3N2)	0	0	0	0	0	1	0	1
B	0	0	0	0	1	1	1	3
Pandemic A(H1N1) 09	0	0	0	0	0	1	0	1
<b>Total</b>	<b>1</b>	<b>1</b>	<b>2</b>	<b>1</b>	<b>1</b>	<b>3</b>	<b>3</b>	<b>12</b>

**Figure 4: Total influenza viruses from sentinel surveillance by type and week reported, weeks 18–37 and the total percentage positive from the swabs received**



In addition, 324 swabs were received by virology laboratories from non-sentinel surveillance. Of these, 79 viruses were identified: A(H3N2) (35), B (24), A (not sub-typed) (15) and pandemic A(H1N1) 09 (5) (Figure 5). The distribution by DHB is shown in Table 2.

**Table 2: Influenza viruses from non-sentinel surveillance for week 37 by DHB**

Antigenic Strain	AK	CM	WK	BP	TK	MC	CC	CB	SC	SN	Total
A (not sub-typed)	4	0	4	1	0	1	0	5	0	0	15
A(H3N2)	12	9	0	0	1	1	2	9	0	1	35
B	0	0	5	0	0	0	4	15	0	0	24
Pandemic A(H1N1) 09	0	1	0	0	0	0	0	3	1	0	5
<b>Total</b>	<b>16</b>	<b>10</b>	<b>9</b>	<b>1</b>	<b>1</b>	<b>2</b>	<b>6</b>	<b>32</b>	<b>1</b>	<b>1</b>	<b>79</b>

**Figure 5: Total influenza viruses from non-sentinel surveillance by type and week reported, weeks 18–37 and the total percentage positive from the swabs received**

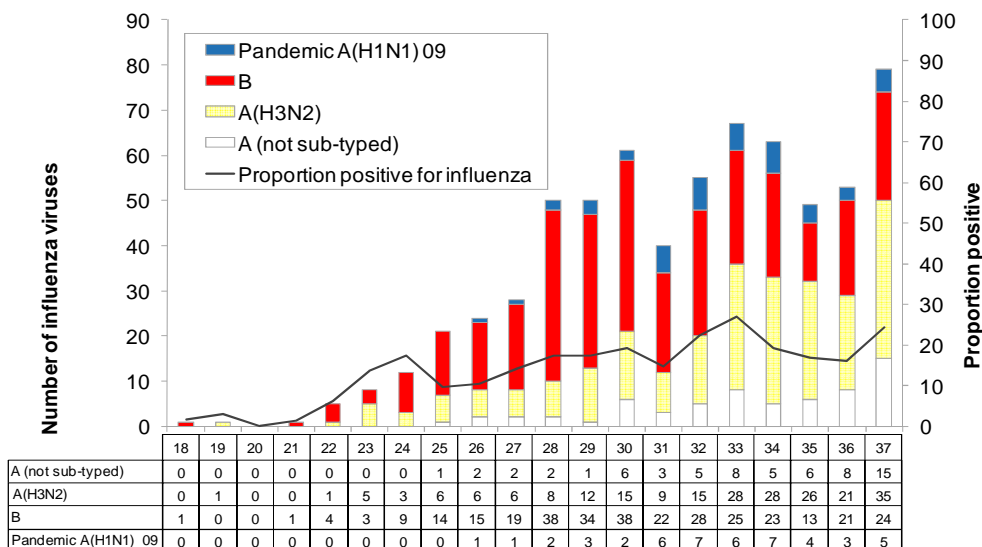


Figure 6 shows the cumulative total of influenza viruses confirmed (sentinel and non-sentinel surveillance) from week 1 to the end of week 37 (18 September 2011). A total of 983 influenza viruses were identified: influenza B (516) including 237 of B/Brisbane/60/2008 - like viruses and three B/Florida/4/2006 - like virus, pandemic A(H1N1) 09 (89) including 16 A/California/7/2009 (H1N1) - like virus, A (H3N2) (280) including 89 A/Perth/16/2009 (H3N2) - like virus, and A (not sub-typed) (98). The major circulating influenza strains (B/Brisbane/60/2008 - like, A/California/7/2009 (H1N1) - like and A/Perth/16/2009 (H3N2) - like strains) are covered by the current influenza vaccine.

**Figure 6: Cumulative laboratory-confirmed viruses by DHB from week 1 to week 37, 18 September 2011**

